

Job Name: 25-1431 - Georgetown Commons  
 Job Location: Georgetown, KY  
 Contractor: Winwater Hartford KY Co.

Plant: Beaver Dam

4/23/2026 11:30:42 AM

Tech: J. Copping

PC: A. Chambers



**Structure ID: YD 101**

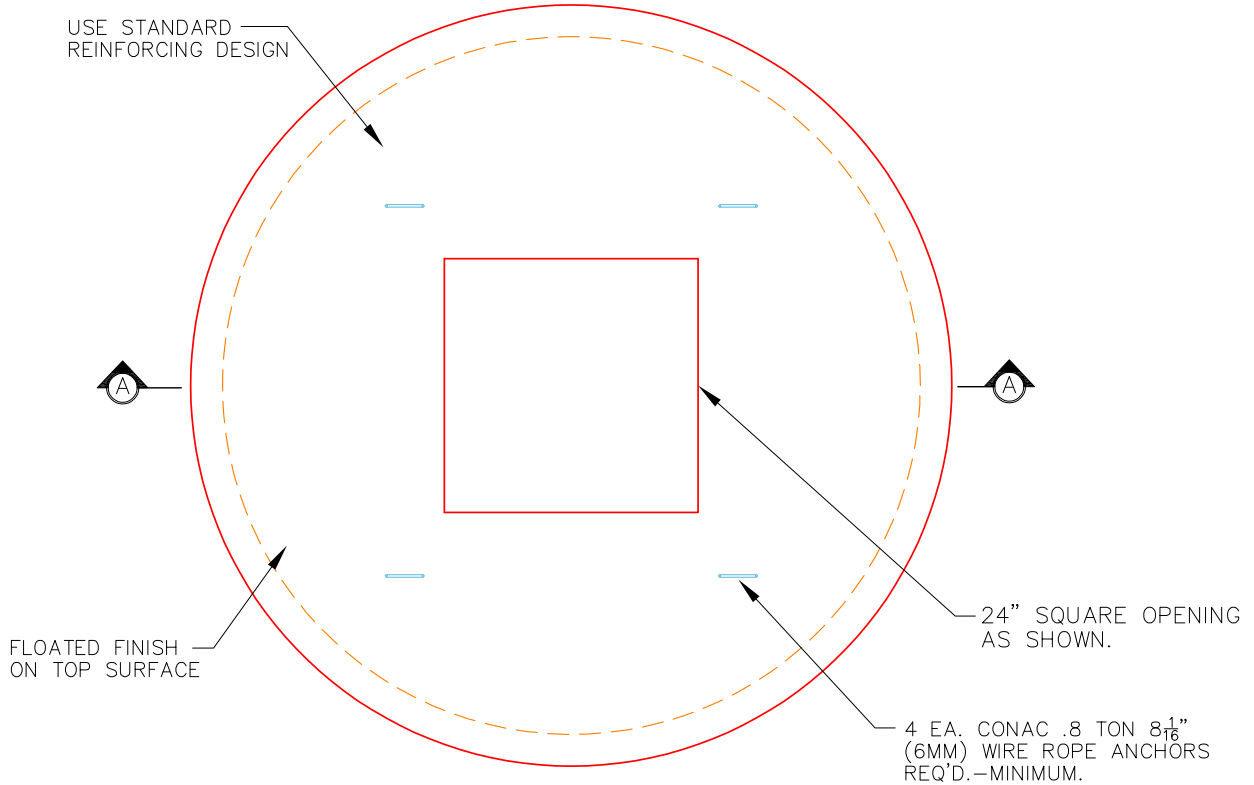
**P2 MH060LD13-24SQ**

**MH FLAT TOP w/24"x24" Hole**

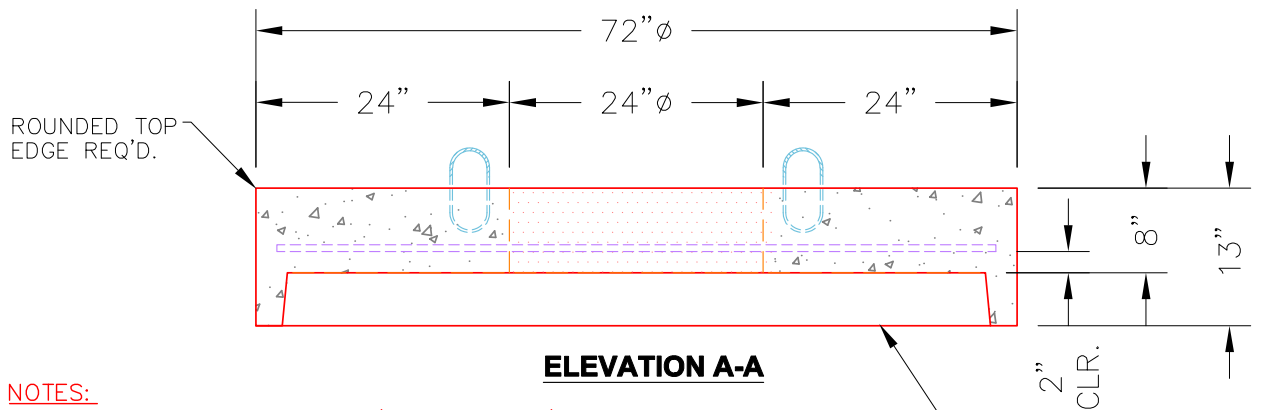
- P4) 24" x 24" - CASTING HEIGHT - 4"
- P3) 24" x 24" - GRADE RING - 3"
- P2) 60" - MH FLAT TOP w/24"x24" Hole - 13"
- P1) 60" - MH BASE - 60"
- 1) CASTING - HOE 280T F/G
- 1) 60" - Conseal CS-102 1.00"
- 2) 24" x 24" - Conseal CS-102 1.00"
- 1) Hole - 40
- 1) Hole - 30
- 5) MH Step ML-10-TDS-NCR - 10"

- Structure Notes:**
1. JR HOE HOE-280T PROVIDED BY ICAST.
  2. PER ASTM C478 SPECIFICATIONS.
  3. CONCRETE = 4,000 PSI AT 28 DAYS.
  4. REINFORCING PER ASTM A615 (GRADE 60).
    - TOP SLAB (As .62) #5 BARS AT 6" C.C.E.W..
    - RISER/WALLS (As .12)
    - FLOOR (As .31) #5 BARS AT 12" C.C.E.W.

Structure Total: 11004 lb



**PLAN VIEW**



**ELEVATION A-A**

- NOTES:**
1. MANUFACTURED TO ASTM C-478 (LATEST REVISION).
  2. CONCRETE: 5,000 PSI AT 28 DAYS.
  3. REINFORCING: #5 BAR @ 6" C/C (GRADE 60).
  4. WEIGHT: 2,800 LBS.

Coating (Int): Coating (Ext):	Seam Up: Flat Seam Dn: Groove	Wall Thickness: 6"	Height (Ext): 13"	Weight (Net): 2619 lb Volume (Net): 0.67cu.yd
----------------------------------	----------------------------------	--------------------	-------------------	--