

Job Name: 25-1431 - Georgetown Commons  
 Job Location: Georgetown, KY  
 Contractor: Winwater Hartford KY Co.

Plant: Beaver Dam

Tech: J. Copping

4/23/2026 11:30:55 AM

PC: A. Chambers



**Structure ID: SCI 302**

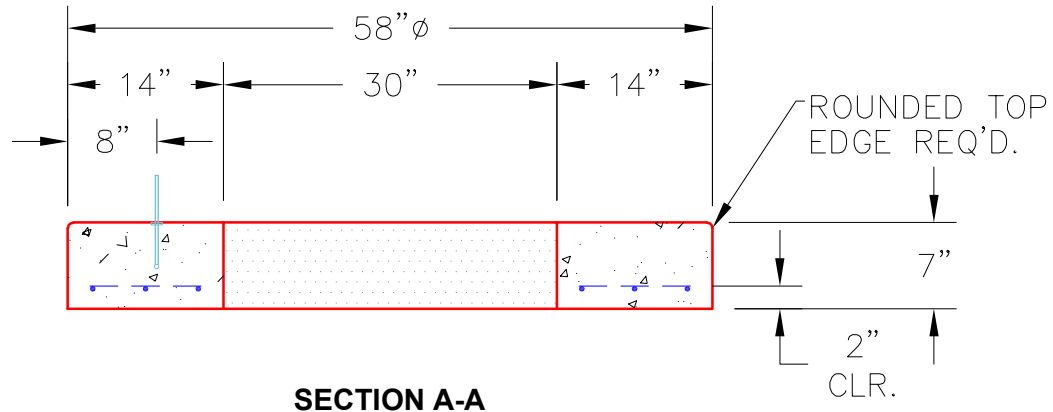
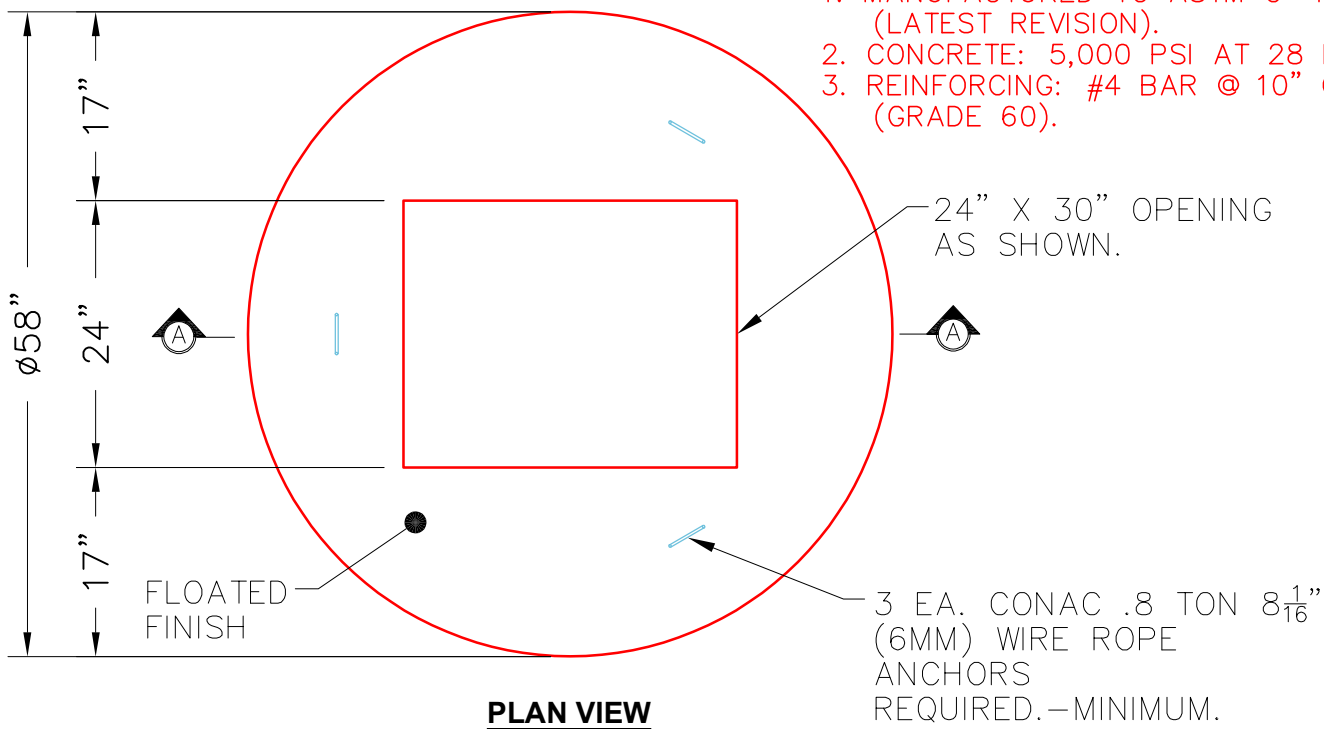
**P4 MH048LD07-24X30RECT**

**MH FLAT TOP w/24"x30" Hole**

- P5) 24" x 30" - CASTING HEIGHT - 5"
- P4) 48" - MH FLAT TOP w/24"x30" Hole - 7"
- P3) 48" - MH RISER Custom Ht - 40"
- P2) 84" x 84" - CB FT REDUCER 48" HOLE - 10"
- P1) 84" x 84" - BOX BASE 8inW, 8inF, Variable Ht - 83"
- 1) CASTING - HOE 360 Set (F/G/H)
- 1) 84" x 84" - Conseal CS-102 1.00"
- 2) 48" - Conseal CS-102 1.00"
- 1) 24" x 30" - Conseal CS-102 1.00"
- 2) Hole - 75
- 1) Hole - 22
- 10) MH Step ML-10-TDS-NCR - 10"

0 lb	<b>Structure Notes:</b>
1129 lb	
2630 lb	
6873 lb	
21286 lb	
362 lb	
0 lb	
0 lb	
0 lb	
0 lb	
Structure Total: 32279 lb	<ol style="list-style-type: none"> <li>1. JR HOE HOE-360 SET BY ICAST.</li> <li>2. PER ASTM C478 SPECIFICATIONS.</li> <li>3. CONCRETE = 4,000 PSI AT 28 DAYS.</li> <li>4. REINFORCING PER ASTM A615 (GRADE 60).           <ul style="list-style-type: none"> <li>- TOP SLAB (As .62) #5 BARS AT 6" C.C.E.W..</li> <li>- RISER/WALLS (As .12)</li> <li>- FLOOR (As .31) #5 BARS AT 12" C.C.E.W.</li> </ul> </li> </ol>

- NOTES:**
1. MANUFACTURED TO ASTM C-478 (LATEST REVISION).
  2. CONCRETE: 5,000 PSI AT 28 DAYS.
  3. REINFORCING: #4 BAR @ 10" O.C. E.W. (GRADE 60).



Coating (Int): Coating (Ext):	Seam Up: Flat Seam Dn: Flat	Wall Thickness: 5"	Height (Ext): 7"	Weight (Net): 1129 lb Volume (Net): 0.29cu.yd
----------------------------------	--------------------------------	--------------------	------------------	--------------------------------------------------