

Job Name: 25-1431 - Georgetown Commons
 Job Location: Georgetown, KY
 Contractor: Winwater Hartford KY Co.

Plant: Beaver Dam

Tech: J. Coppage

4/23/2026 11:20:42 AM

PC: A. Chambers



Structure ID: SCI 302

P1 BX8484-08WFVF

BOX BASE 8inW, 8inF, Variable Ht

- P5) 24" x 30" - CASTING HEIGHT - 5"
- P4) 48" - MH FLAT TOP w/24"x30" Hole - 7"
- P3) 48" - MH RISER Custom Ht - 40"
- P2) 84" x 84" - CB FT REDUCER 48" HOLE - 10"
- P1) 84" x 84" - BOX BASE 8inW, 8inF, Variable Ht - 83"
- 1) CASTING - HOE 360 Set (F/G/H)
- 1) SECONDARY POUR - WALLS
- 1) 84" x 84" - Conseal CS-102 1.00"
- 2) 48" - Conseal CS-102 1.00"
- 1) 24" x 30" - Conseal CS-102 1.00"
- 2) Hole - 75
- 1) Hole - 22
- 10) MH Step ML-10-TDS-NCR - 10"

- 0 lb
- 1129 lb
- 2630 lb
- 6873 lb
- 21286 lb
- 362 lb
- 0 lb
- 0 lb
- 0 lb
- 0 lb
- 0 lb
- 0 lb
- 0 lb
- 0 lb
-
- 0 lb
- 32279 lb

Structure Notes:

1. JR HOE HOE-360 SET BY ICAST.
2. PER ASTM C478 SPECIFICATIONS.
3. CONCRETE = 4,000 PSI AT 28 DAYS.
4. REINFORCING PER ASTM A615 (GRADE 60).
 - TOP SLAB (As .62) #5 BARS AT 6" C.C.E.W..
 - RISER/WALLS (As .12)
 - FLOOR (As .31) #5 BARS AT 12" C.C.E.W.

Structure Total: 32279 lb

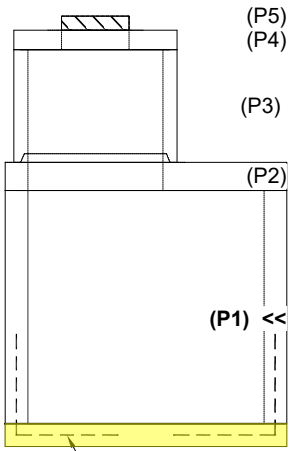
FIRST POUR DRAWING

Rim: 873.75' Rim to Invert: 11.75' Slack: 2" Sump: 6" Step Position: 180°

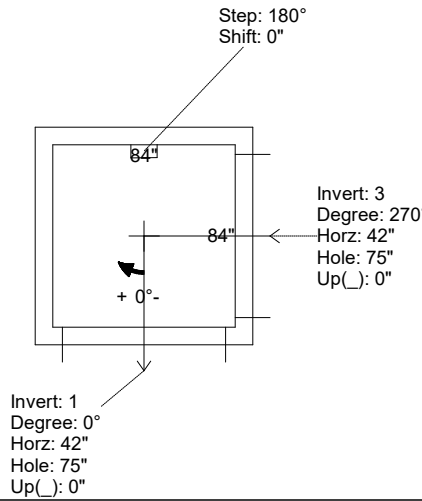
Position	Elev	Angle	Ext. (cw)	Pipe	Pipe OD	Connector	Hole	Horz Size	Up ()	Offset
Invert 1	862'	0°	50"	60" RCP B WALL	72"	Hole 75	75"	75"	0"	0"
Invert 2										
Invert 3	862'	270°	50"	60" RCP B WALL	72"	Hole 75	75"	75"	0"	0"
Invert 4										
Invert 5										
Invert 6										
Invert 7										
Invert 8										

RIGHT-SIDE UP VIEW (int. dimensions)

UPSIDE-DOWN VIEW (int. dimensions)



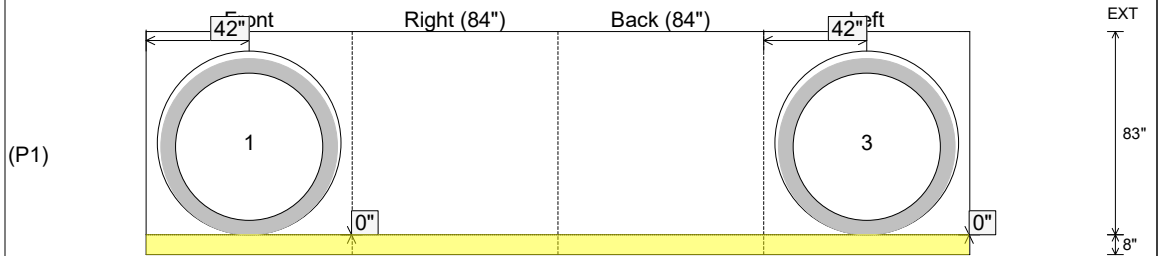
36" X 36" #5 BAR "L"
 @ 12" ON CENTER
 TIED INTO THE MAT



WEIGHTS:

FIRST POUR - 6,713 LBS.
SECOND POUR - 17,573 LBS.
TOTAL - 21,286 LBS.

INSIDE WALL DIMENSIONS



Coating (Int):
 Coating (Ext):

Seam Up: Flat
 Seam Dn: n/a

Wall Thickness: 8"
 Floor Height: 8"

Height (Int): 83"
 Height (Ext): 91"

Weight (Net): 21286 lb
 Volume (Net): 5.44cu.yd

