

Job Name: 25-1431 - Georgetown Commons
 Job Location: Georgetown, KY
 Contractor: Winwater Hartford KY Co.

Plant: Beaver Dam
 4/23/2026 11:30:32 AM

Tech: J. Coppage
 PC: A. Chambers



Structure ID: SCI 30

P2 MH072LD15-24X30RECT

MH FLAT TOP w/24"x30" Hole

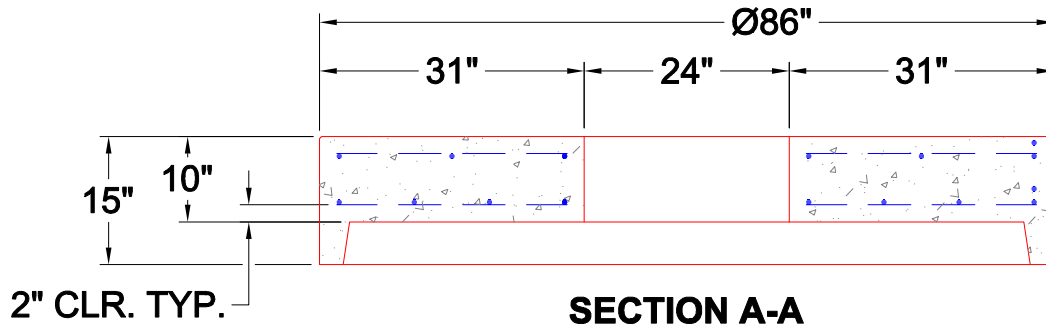
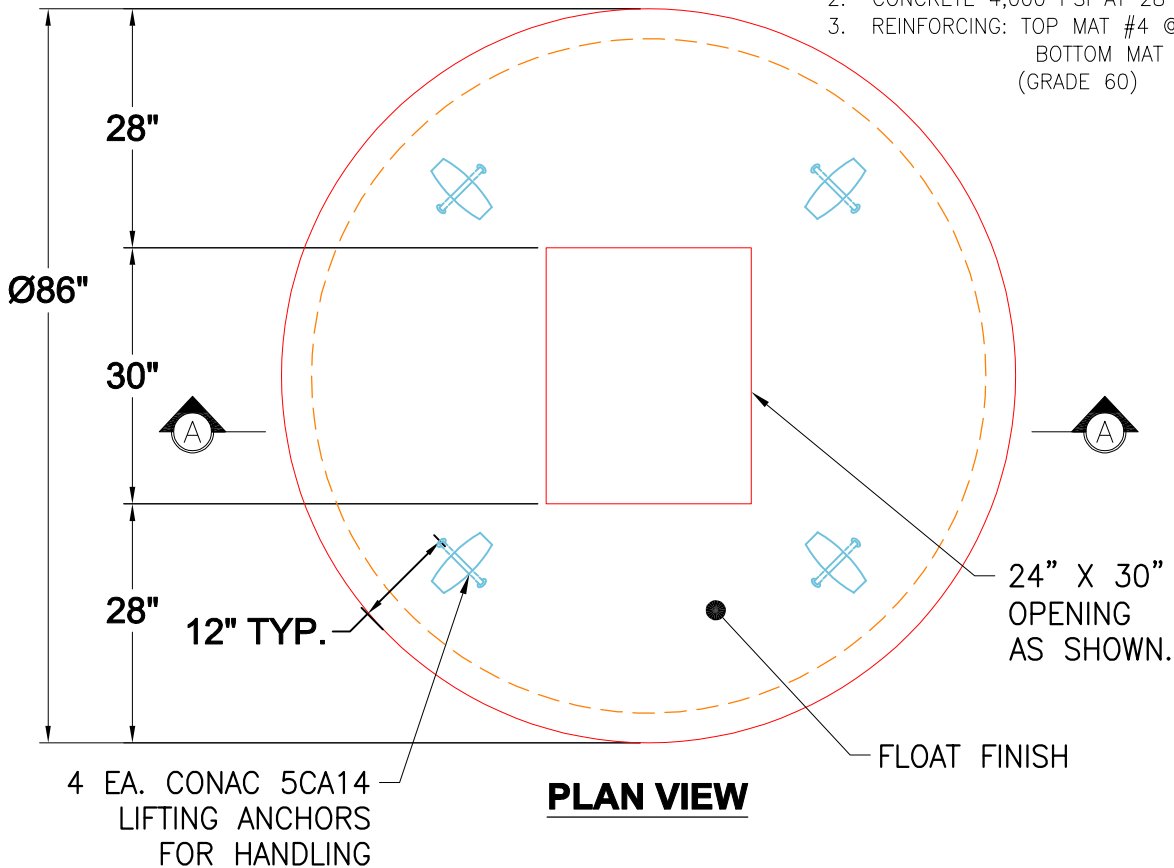
- P4) 24" x 30" - CASTING HEIGHT - 6"
- P3) 24" x 30" - GRADE RING - 3"
- P2) 72" - MH FLAT TOP w/24"x30" Hole - 15"
- P1) 72" - MH BASE - 84"
- 1) CASTING - HOE 360 Set (F/G/H)
- 1) 72" - Conseal CS-102 1.00"
- 2) 24" x 30" - Conseal CS-102 1.00"
- 2) Hole - 50
- 1) Hole - 12
- 7) MH Step ML-10-TDS-NCR - 10"

- Structure Notes:**
1. JR HOE HOE-360 PROVIDED BY ICAST.
 2. PER ASTM C478 SPECIFICATIONS.
 3. CONCRETE = 4,000 PSI AT 28 DAYS.
 4. REINFORCING PER ASTM A615 (GRADE 60).
 - TOP SLAB (As .62) #5 BARS AT 6" C.C.E.W..
 - RISER/WALLS (As .18)
 - FLOOR (As .37) #5 BARS AT 10" C.C.E.W.

Structure Total: 18778 lb

GENERAL NOTES:

1. MANUFACTURED TO ASTM C-478 (LATEST REVISION).
2. CONCRETE 4,000 PSI AT 28 DAYS.
3. REINFORCING: TOP MAT #4 @ 18" O.C. E.W.
 BOTTOM MAT #4 @ 9" O.C. E.W.
 (GRADE 60)



| | | | | |
|----------------------------------|----------------------------------|--------------------|-------------------|--|
| Coating (Int): Coating (Ext): | Seam Up: Flat Seam Dn: Groove | Wall Thickness: 7" | Height (Ext): 15" | Weight (Net): 4561 lb Volume (Net): 1.16cu.yd |
|----------------------------------|----------------------------------|--------------------|-------------------|--|