

Job Name: 25-1431 - Georgetown Commons
 Job Location: Georgetown, KY
 Contractor: Winwater Hartford KY Co.

Plant: Beaver Dam

4/9/2026 10:01:05 AM

Tech: J. Coppage

PC: A. Chambers



Structure ID: MH 326

P2 MH096TS17-48ECC

MH Transition Slab 48" Hole

- P5) 24" - CASTING HEIGHT - 7"
- P4) 48" - ECC CONE w/ 24" HOLE - 24"
- P3) 48" - MH RISER - 36"
- P2) 96" - MH Transition Slab 48" Hole - 17"
- P1) 96" - MH MONOBASE 12F, Custom Ht - 80"
- 1) CASTING - HOE MC-420 F/C Storm LOU-MSD
- 1) 96" - Conseal CS-102 1.00"
- 2) 48" - Conseal CS-102 1.00"
- 1) Hole - 68
- 1) Hole - 50
- 1) Hole - 62
- 11) MH Step ML-10-TDS-NCR - 10"

0 lb	Structure Notes:
1550 lb	1. JR HOE MC-420 PROVIDED BY ICAST.
2515 lb	2. PER ASTM C478 SPECIFICATIONS.
9106 lb	3. CONCRETE = 4,000 PSI AT 28 DAYS.
23222 lb	4. REINFORCING PER ASTM A615 (GRADE 60).
340 lb	- TOP SLAB (As .62) #5 BARS AT 6" C.C.E.W..
0 lb	- RISER/WALLS (As .18)
0 lb	- FLOOR (As .37) #5 BARS AT 10" C.C.E.W.
0 lb	
0 lb	
0 lb	
0 lb	
0 lb	
Structure Total:	36733 lb

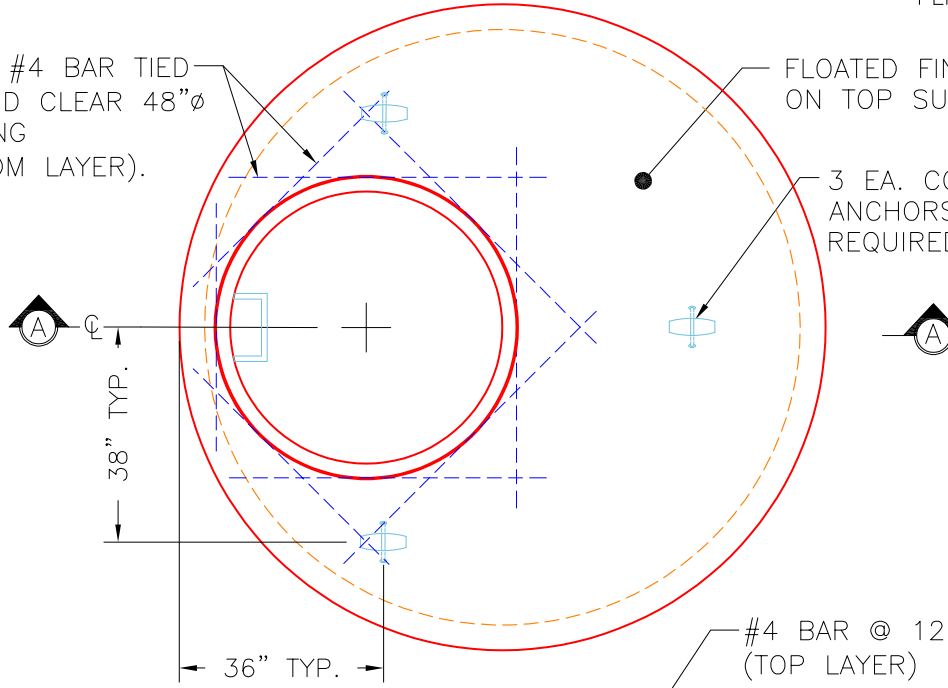
GENERAL NOTES:

1. MANUFACTURED TO ASTM C-478 (LATEST REVISION).
2. CONCRETE 5,000 PSI AT 28 DAYS.
3. REINFORCING: TOP MAT: #4 BAR @ 12" C/C E.W.
 BOTTOM MAT: #5 BAR @ 8" C/C E.W.
 PER ASTM A615 (GRADE 60)

EXTRA #4 BAR TIED
 AROUND CLEAR 48"Ø
 OPENING
 (BOTTOM LAYER).

FLOATED FINISH
 ON TOP SURFACE

3 EA. CONAC 6CA18
 ANCHORS
 REQUIRED FOR HANDLING.

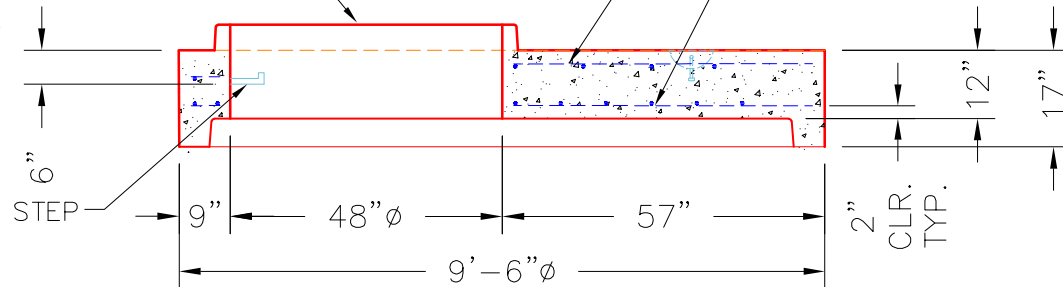


PLAN VIEW

48"Ø TRANSITION OPENING
 WITH TONGUE FOR 48"Ø
 RISERS.

#4 BAR @ 12" C/C E.W.
 (TOP LAYER)

#5 BAR @ 8" C/C E.W.
 (BOTTOM LAYER)



SECTION A-A

Coating (Int): Coating (Ext):	Seam Up: Tongue Seam Dn: Groove	Wall Thickness: 9"	Height (Ext): 17"	Weight (Net): 9106 lb Volume (Net): 2.33cu.yd
----------------------------------	------------------------------------	--------------------	-------------------	--