

Job Name: 25-1431 - Georgetown Commons
 Job Location: Georgetown, KY
 Contractor: Winwater Hartford KY Co.

Plant: Beaver Dam

4/9/2026 10:01:04 AM

Tech: J. Coppage

PC: A. Chambers



Structure ID: MH 325

P2 MH084TS17-48ECC

MH Trans. Slab - 48" Hole ECC

- P4) 24" - CASTING HEIGHT - 7"
- P3) 48" - ECC CONE w/ 24" HOLE - 42"
- P2) 84" - MH Trans. Slab - 48" Hole ECC - 17"
- P1) 84" - MH BASE Custom Ht - 94"
- 1) CASTING - HOE MC-420 F/C Storm LOU-MSD
- 1) 84" - Conseal CS-102 1.00"
- 1) 48" - Conseal CS-102 1.00"
- 1) Hole - 62
- 1) Hole - 30
- 1) Hole - 46
- 1) Hole - 54
- 12) MH Step ML-10-TDS-NCR - 10"

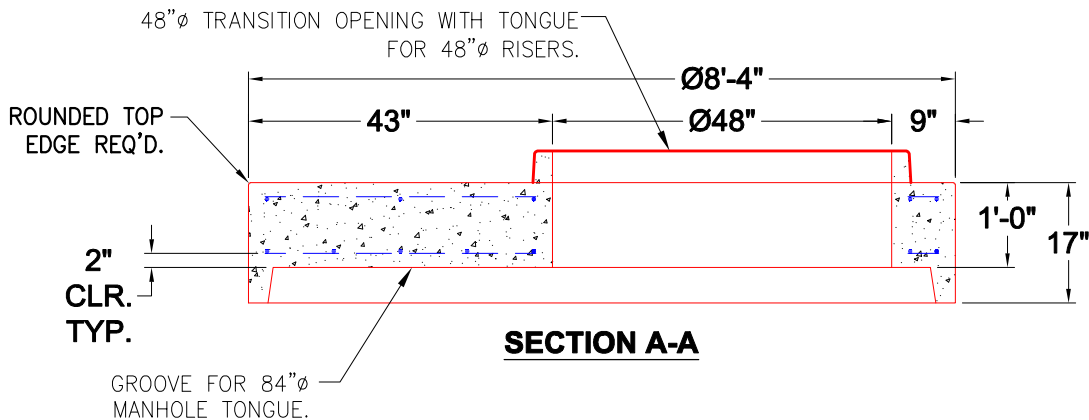
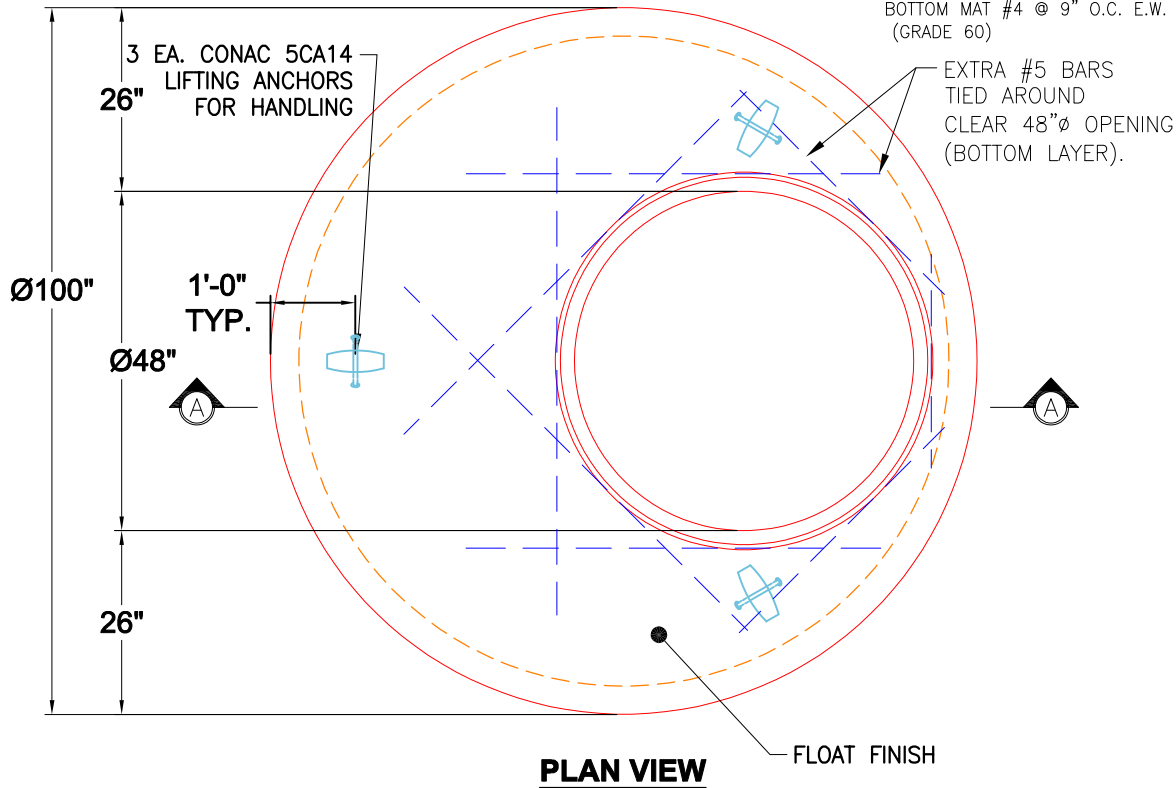
- Structure Notes:**
1. JR HOE MC-420 PROVIDED BY ICAST.
 2. PER ASTM C478 SPECIFICATIONS.
 3. CONCRETE = 4,000 PSI AT 28 DAYS.
 4. REINFORCING PER ASTM A615 (GRADE 60).
 - TOP SLAB AS NOTED BELOW.
 - RISER/WALLS (As .18)
 - FLOOR (As .37) #5 BARS AT 10" C.C.E.W.

0 lb
 3200 lb
 5869 lb
 17977 lb
 340 lb
 0 lb
 0 lb
 0 lb
 0 lb
 0 lb
 0 lb
 0 lb

Structure Total: 27386 lb

GENERAL NOTES:

1. MANUFACTURED TO ASTM C-478 (LATEST REVISION).
2. CONCRETE 5,000 PSI AT 28 DAYS.
3. REINFORCING: TOP MAT #4 @ 18" O.C. E.W.
 BOTTOM MAT #4 @ 9" O.C. E.W.
 (GRADE 60)



Coating (Int): Coating (Ext):	Seam Up: Tongue Seam Dn: Groove	Wall Thickness: 8"	Height (Ext): 17"	Weight (Net): 5869 lb Volume (Net): 1.5cu.yd
----------------------------------	------------------------------------	--------------------	-------------------	---