

Job Name: 25-1431 - Georgetown Commons
Job Location: Georgetown, KY
Contractor: Winwater Hartford KY Co.

PC: A. Chambers
 TECH: J. Coppage
 Plant: Beaver Dam



Structure ID: **MH 324**

Spec: Storm
 Type: STM.MH Transition
 Size: 72"

Rim: 872.55'
 Invert: 860.75'
 Rim to Invert: 11.8'

Sump: 4.5"
 Floor (Top): 860.375'
 Floor Height: 8"

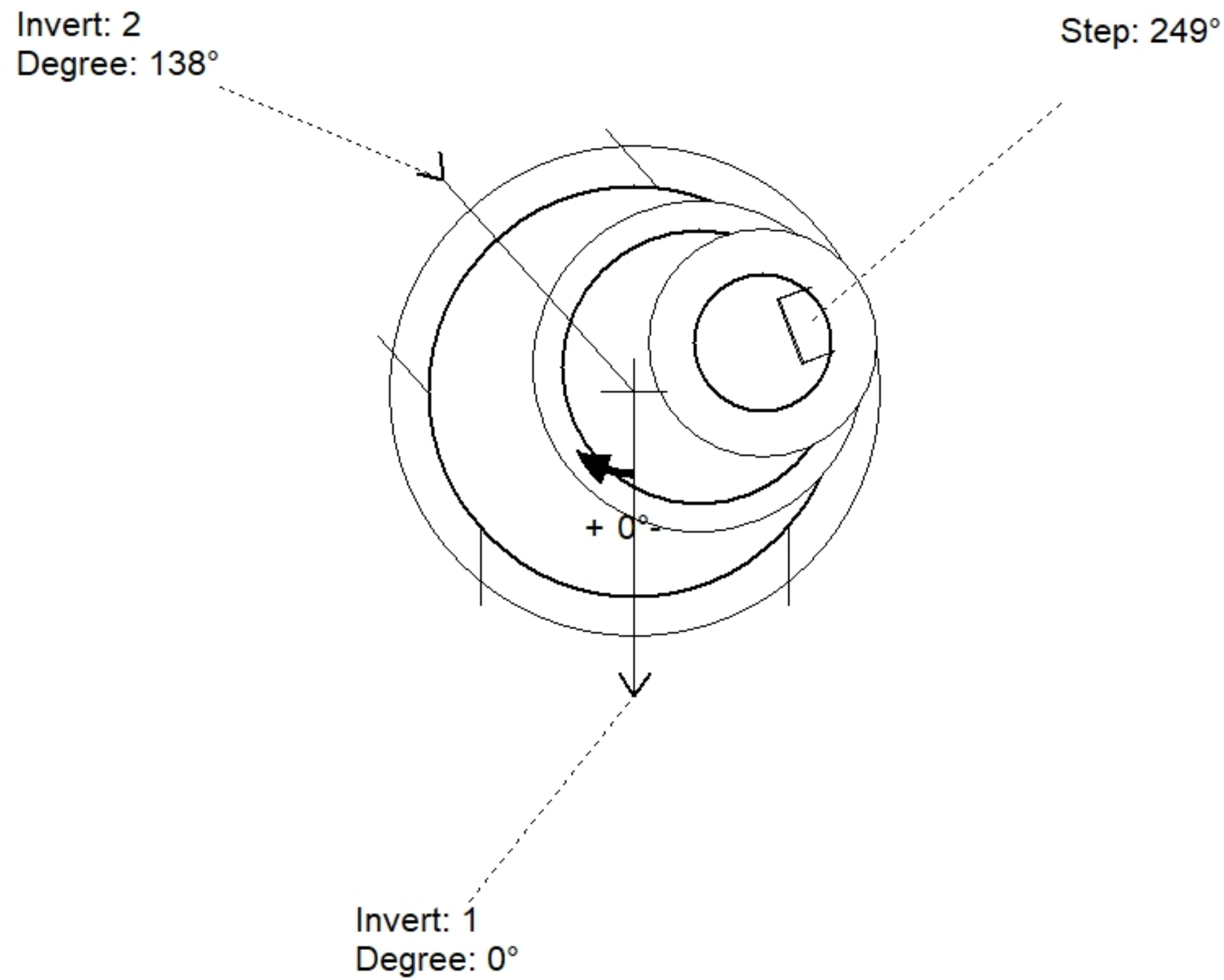
Floor (Bot): 859.708'
 Overall Height: 12.75'
 Slack: 1.1"

Structure Notes:

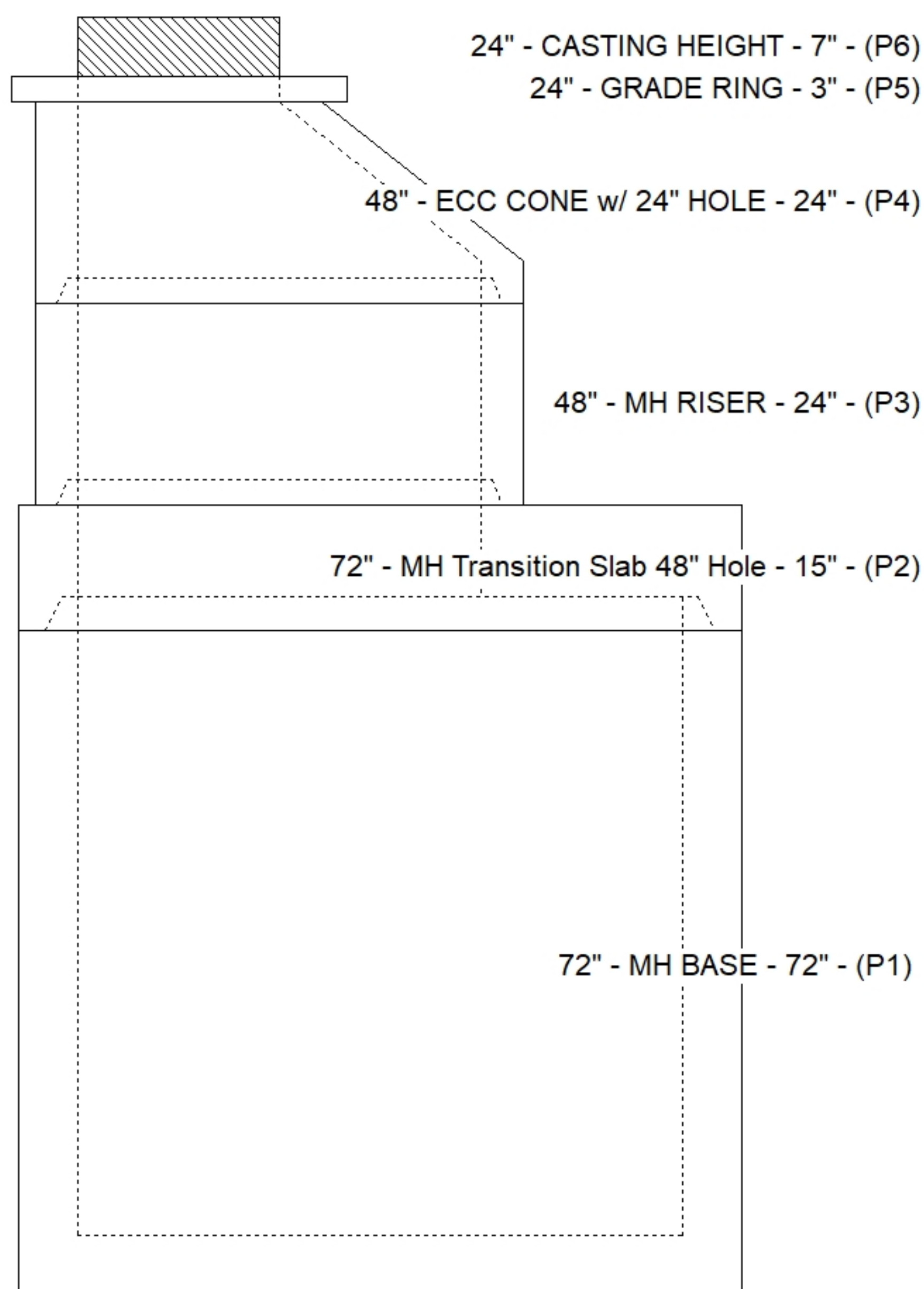
1. JR HOE MC-420 PROVIDED BY ICAST.
2. PER ASTM C478 SPECIFICATIONS.
3. CONCRETE = 4,000 PSI AT 28 DAYS.
4. REINFORCING PER ASTM A615 (GRADE 60).
 - TOP SLAB (As .62) #5 BARS AT 6" C.C.E.W..
 - RISER/WALLS (As .18)
 - FLOOR (As .37) #5 BARS AT 10" C.C.E.W.

STRUCTURE SUMMARY:

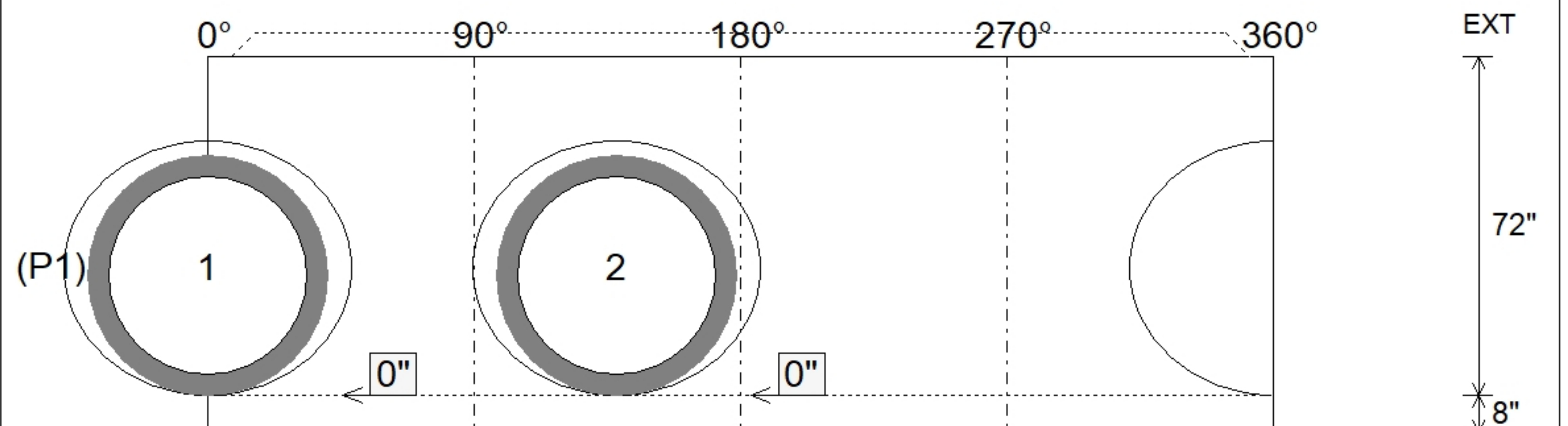
P6) 24" - CASTING HEIGHT - 7"	0 lb
P5) 24" - GRADE RING - 3"	202 lb
P4) 48" - ECC CONE w/ 24" HOLE - 24"	1550 lb
P3) 48" - MH RISER - 24"	1677 lb
P2) 72" - MH Transition Slab 48" Hole - 15"	3864 lb
P1) 72" - MH BASE - 72"	11420 lb
1) CASTING - HOE MC-420 F/C Storm LOU-MSD	340 lb
1) 72" - Conseal CS-102 1.00"	0 lb
2) 48" - Conseal CS-102 1.00"	0 lb
2) Hole - 54	0 lb
11) MH Step ML-10-TDS-NCR - 10"	0 lb
Structure Total:	19053 lb



Position	Elev	Angle	Pipe	Pipe OD	Hole	Connector	Up ()	Ref
Rim	872.55'							
Reducer	866.375'							
Invert 1	860.75'	0°	42" RCP B WALL	51"	54"	Hole 54	0"	P1
Invert 2	860.75'	138°	42" RCP B WALL	51"	54"	Hole 54	0"	P1
Invert 3								
Invert 4								
Invert 5								
Invert 6								
Invert 7								
Invert 8								



Default - Interior Dimensions



Submittal Drawing
 4/10/2026 10:35:20 AM

SUBMITTAL
 APPROVED BY: