

Job Name: 25-1431 - Georgetown Commons
 Job Location: Georgetown, KY
 Contractor: Winwater Hartford KY Co.

Plant: Beaver Dam

4/9/2026 10:01:03 AM

Tech: J. Coppage

PC: A. Chambers



Structure ID: MH 324

P2 MH072TS15-48ECC

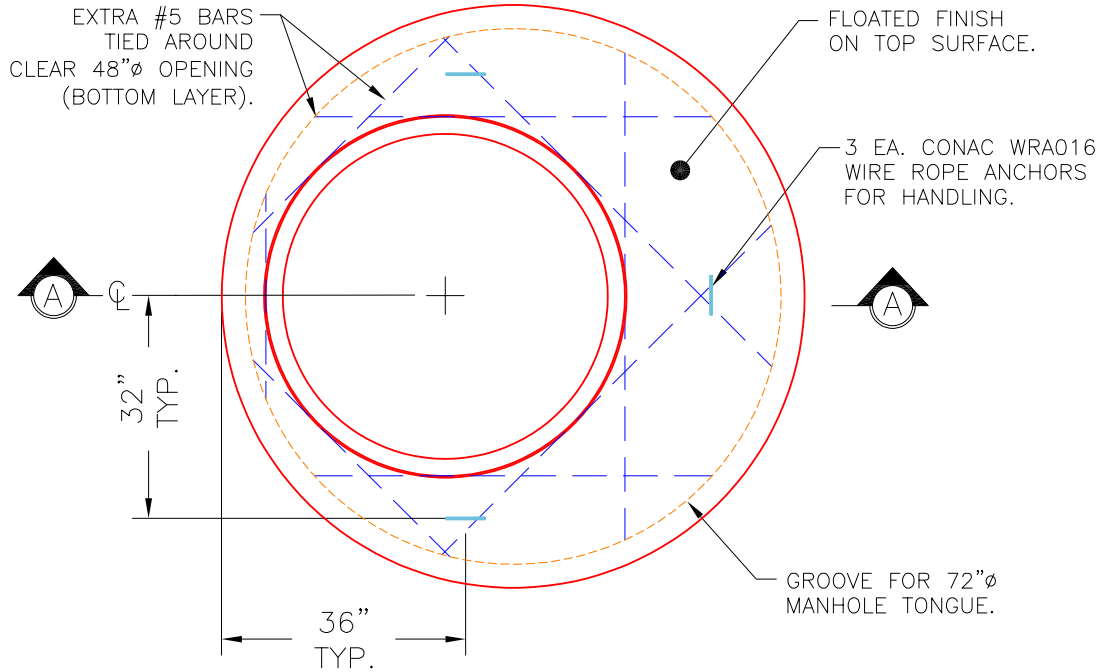
MH Transition Slab 48" Hole

- P6) 24" - CASTING HEIGHT - 7"
- P5) 24" - GRADE RING - 3"
- P4) 48" - ECC CONE w/ 24" HOLE - 24"
- P3) 48" - MH RISER - 24"
- P2) 72" - MH Transition Slab 48" Hole - 15"
- P1) 72" - MH BASE - 72"
- 1) CASTING - HOE MC-420 F/C Storm LOU-MSD
- 1) 72" - Conseal CS-102 1.00"
- 2) 48" - Conseal CS-102 1.00"
- 2) Hole - 54
- 11) MH Step ML-10-TDS-NCR - 10"

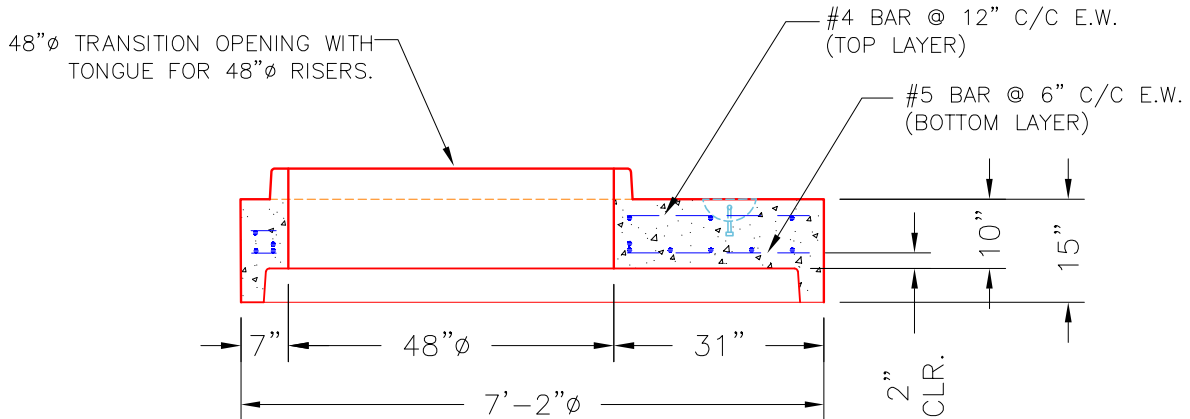
0 lb	Structure Notes:
202 lb	1. JR HOE MC-420 PROVIDED BY ICAST.
1550 lb	2. PER ASTM C478 SPECIFICATIONS.
1677 lb	3. CONCRETE = 4,000 PSI AT 28 DAYS.
3864 lb	4. REINFORCING PER ASTM A615 (GRADE 60).
11420 lb	- TOP SLAB AS SHOWN BELOW.
340 lb	- RISER/WALLS (As .18)
0 lb	- FLOOR (As .37) #5 BARS AT 10" C.C.E.W.
0 lb	
0 lb	
0 lb	
0 lb	
0 lb	
Structure Total:	19053 lb

NOTES:

1. MANUFACTURED TO ASTM C-478 (LATEST REVISION).
2. CONCRETE: 5,000 PSI AT 28 DAYS.
3. REINFORCING: #4 & #5 BAR AS SHOWN (GRADE 60).
4. TONGUE REQUIRED OFFSET FOR 48"Ø COMPONENTS.



PLAN VIEW



SECTION A-A

Coating (Int): Coating (Ext):	Seam Up: Tongue Seam Dn: Groove	Wall Thickness: 7"	Height (Ext): 15"	Weight (Net): 3864 lb Volume (Net): 0.99cu.yd
----------------------------------	------------------------------------	--------------------	-------------------	--