

Job Name: 25-1431 - Georgetown Commons
 Job Location: Georgetown, KY
 Contractor: Winwater Hartford KY Co.

Plant: Beaver Dam

Tech: J. Coppage

4/23/2026 11:30:56 AM

PC: A. Chambers



Structure ID: MH 311

P2 MH096LD12ECC

MH FLAT TOP w/ 24" ECC Hole

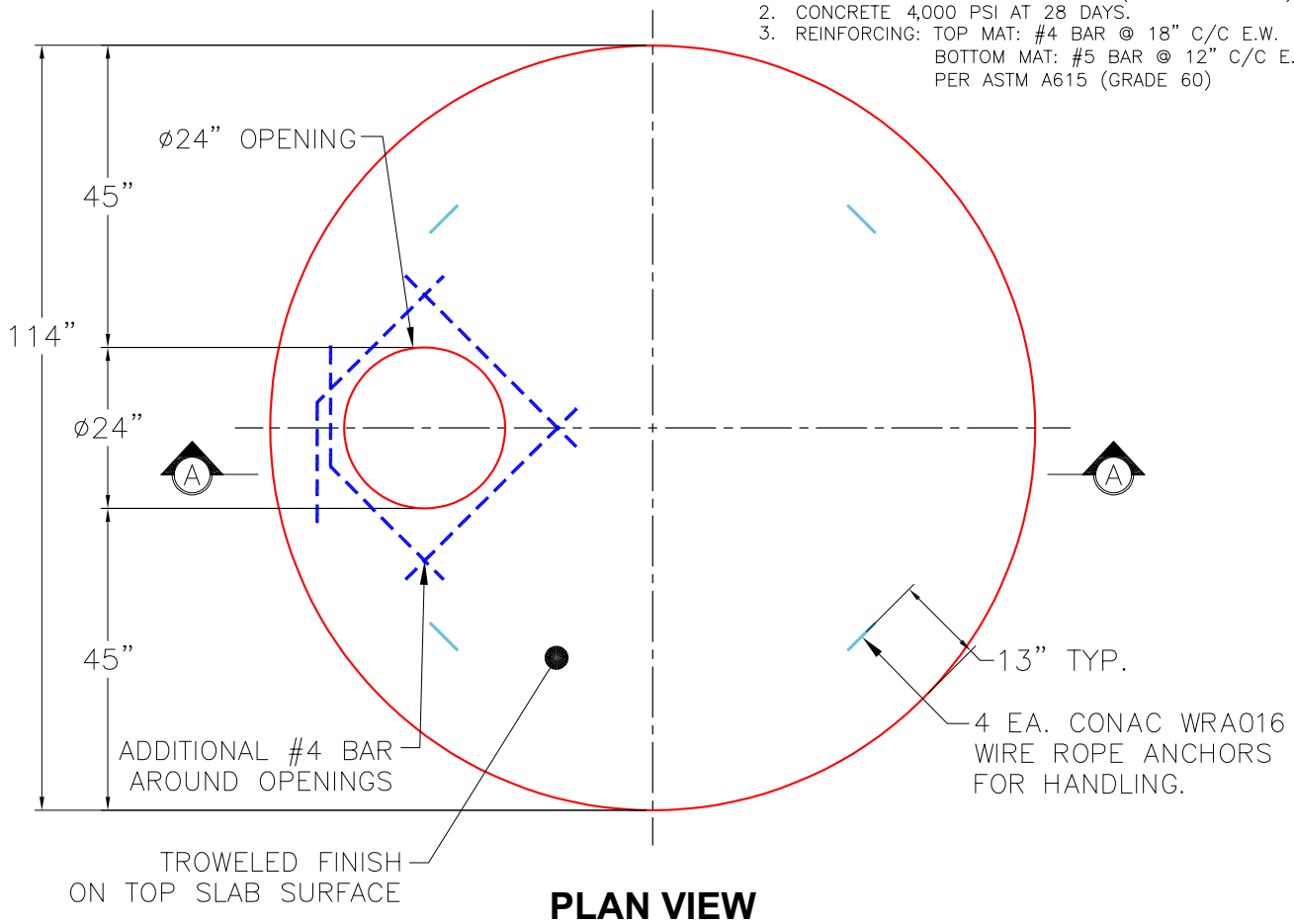
- P3) 24" - CASTING HEIGHT - 7"
- P2) 96" - MH FLAT TOP w/ 24" ECC Hole - 12"
- P1) 96" - MH MONOBASE 12F, Custom Ht - 93"
- 1) CASTING - HOE MC-420 F/C Storm LOU-MSD
- 1) 96" - Conseal CS-102 1.00"
- 1) Hole - 76
- 1) Hole - 22
- 1) Hole - 66
- 7) MH Step ML-10-TDS-NCR - 10"

- Structure Notes:**
1. JR HOE HOE-420 PROVIDED BY ICAST
 2. PER ASTM C913 SPEC'S.
 3. CONCRETE = 4,000 PSI AT 28 DAYS.
 4. REINFORCING PER ASTM A615 (GRADE 60).
 - TRANS. SLAB #5's AT 6" C.C.E.W (DBL MAT).
 - WALLS #5's AT 6" C.C.E.W.
 - FLOOR #5's AT 12" C.C.E.W..

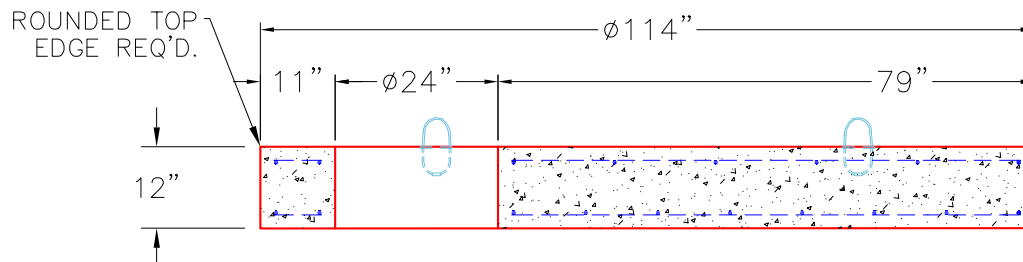
Structure Total: 36664 lb

GENERAL NOTES:

1. MANUFACTURED TO ASTM C-478 (LATEST REVISION).
2. CONCRETE 4,000 PSI AT 28 DAYS.
3. REINFORCING: TOP MAT: #4 BAR @ 18" C/C E.W.
 BOTTOM MAT: #5 BAR @ 12" C/C E.W.
 PER ASTM A615 (GRADE 60)



PLAN VIEW



FRONT VIEW

Coating (Int): Coating (Ext):	Seam Up: Flat Seam Dn: Flat	Wall Thickness: 9"	Height (Ext): 12"	Weight (Net): 9821 lb Volume (Net): 2.51cu.yd
----------------------------------	--------------------------------	--------------------	-------------------	--