

Job Name: 25-1431 - Georgetown Commons  
 Job Location: Georgetown, KY  
 Contractor: Winwater Hartford KY Co.

Plant: Beaver Dam

4/9/2026 10:01:01 AM

Tech: J. Coppage

PC: A. Chambers



**Structure ID: MH 204**

**P3 MH084LD17-24ECC**

**MH FLAT TOP w/24" ECC Hole**

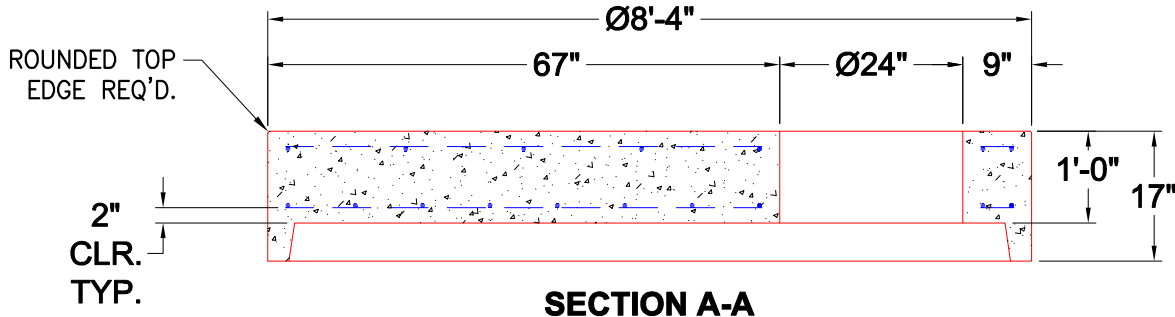
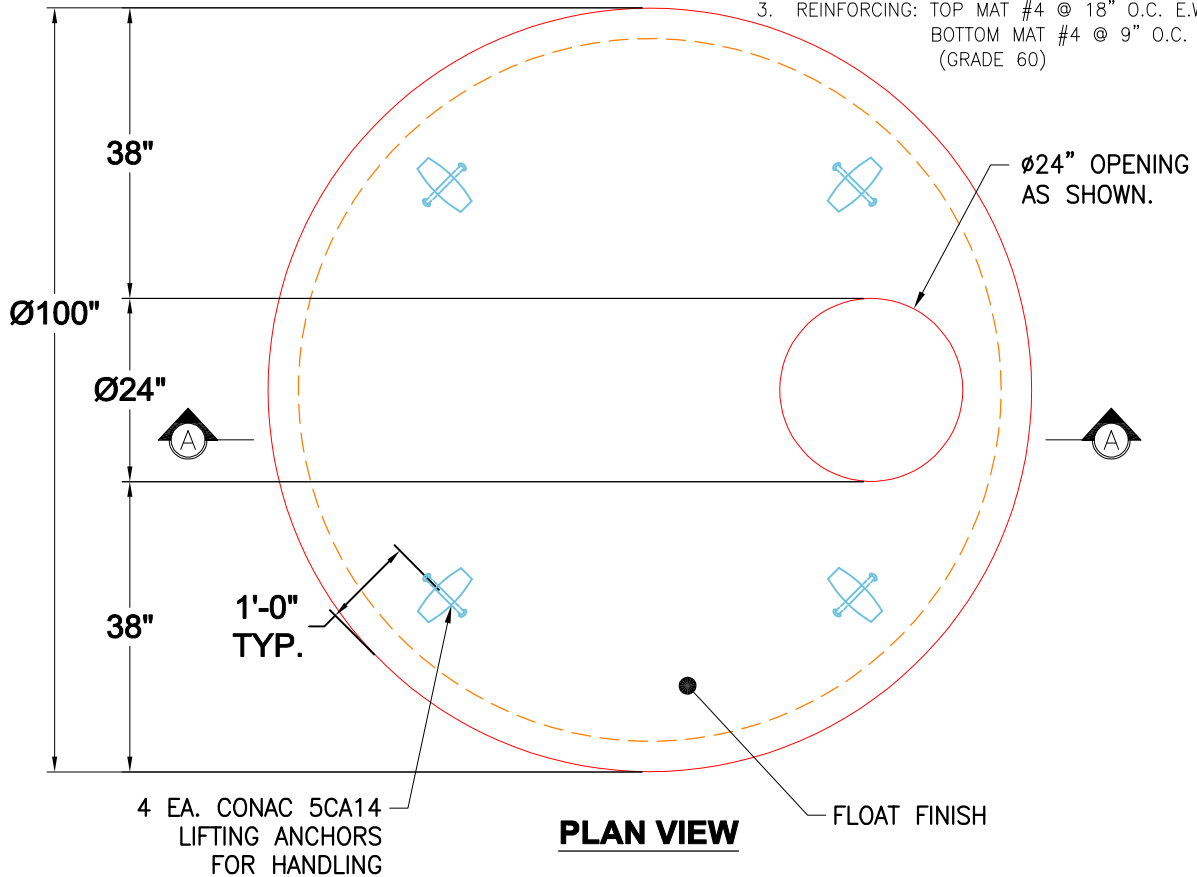
- P4) 24" - CASTING HEIGHT - 7"
- P3) 84" - MH FLAT TOP w/24" ECC Hole - 17"
- P2) 84" - MH RISER - 24"
- P1) 84" - MH BASE Custom Ht - 82"
- 1) CASTING - HOE MC-420 F/C Storm LOU-MSD
- 2) 84" - Conseal CS-102 1.00"
- 2) Hole - 64
- 9) MH Step ML-10-TDS-NCR - 10"

0 lb	<b>Structure Notes:</b> 1. JR HOE MC-420 PROVIDED BY ICAST. 2. PER ASTM C478 SPECIFICATIONS. 3. CONCRETE = 4,000 PSI AT 28 DAYS. 4. REINFORCING PER ASTM A615 (GRADE 60). - TOP SLAB (As .62) #5 BARS AT 6" C.C.E.W. - RISER/WALLS (As .24) - FLOOR (As .47) #5 BARS AT 8" C.C.E.W.
7959 lb	
4657 lb	
16383 lb	
340 lb	
0 lb	
0 lb	
0 lb	
0 lb	
29339 lb	

Structure Total:

GENERAL NOTES:

1. MANUFACTURED TO ASTM C-478 (LATEST REVISION).
2. CONCRETE 5,000 PSI AT 28 DAYS.
3. REINFORCING: TOP MAT #4 @ 18" O.C. E.W.  
 BOTTOM MAT #4 @ 9" O.C. E.W.  
 (GRADE 60)



Coating (Int):	Seam Up: Flat	Wall Thickness: 8"	Height (Ext): 17"	Weight (Net): 7959 lb
Coating (Ext):	Seam Dn: Groove			Volume (Net): 2.03cu.yd