

Job Name: 25-1431 - Georgetown Commons
 Job Location: Georgetown, KY
 Contractor: Winwater Hartford KY Co.

Plant: Beaver Dam

4/23/2026 11:30:47 AM

Tech: J. Coppage

PC: A. Chambers



Structure ID: MH 114

P3 MH072LD15-24ECC

MH FLAT LID w/24in ECC Hole

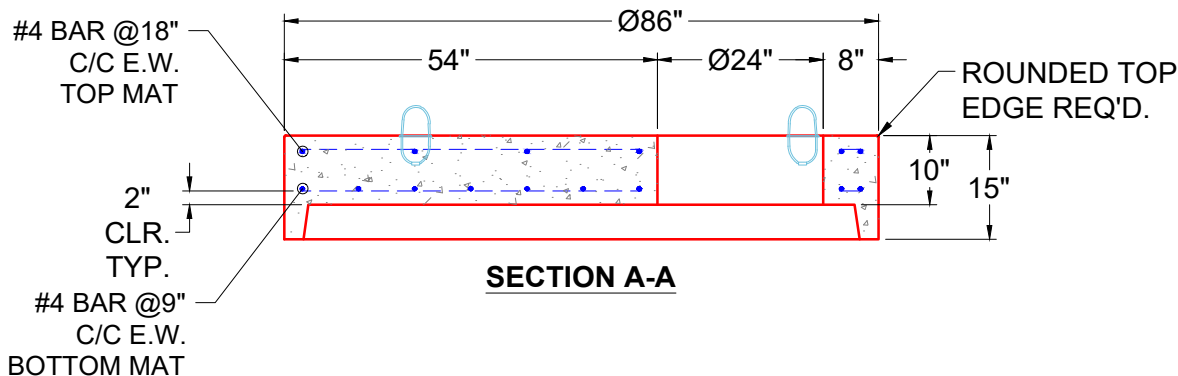
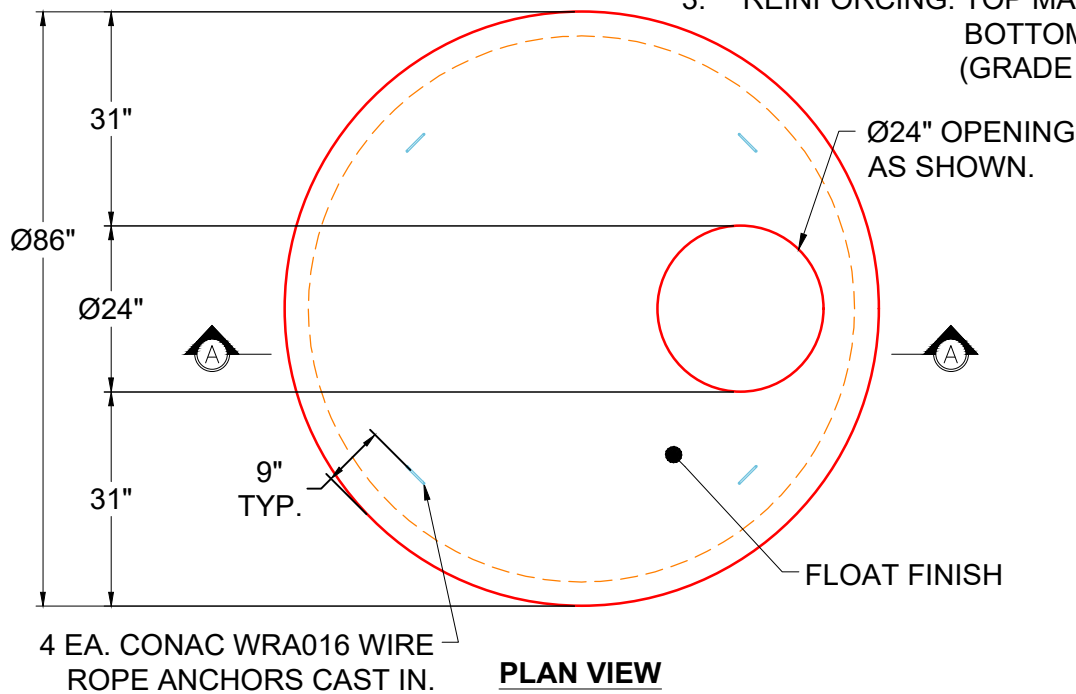
- P4) 24" - CASTING HEIGHT - 7"
- P3) 72" - MH FLAT LID w/24in ECC Hole - 15"
- P2) 72" - MH RISER Custom Ht - 20"
- P1) 72" - MH BASE - 84"
- 1) CASTING - HOE MC-420 F/C Storm LOU-MSD
- 2) 72" - Conseal CS-102 1.00"
- 2) Hole - 46
- 2) Hole - 30
- 7) MH Step ML-10-TDS-NCR - 10"

- Structure Notes:**
1. JR HOE MC-420 PROVIDED BY ICAST.
 2. PER ASTM C478 SPECIFICATIONS.
 3. CONCRETE = 4,000 PSI AT 28 DAYS.
 4. REINFORCING PER ASTM A615 (GRADE 60).
 - TOP SLAB (As .62) #5 BARS AT 6" C.C.E.W..
 - RISER/WALLS (As .18)
 - FLOOR (As .37) #5 BARS AT 10" C.C.E.W.

Structure Total: 21557 lb

GENERAL NOTES:

1. MANUFACTURED TO ASTM C-478 (LATEST REVISION).
2. CONCRETE 4,000 PSI AT 28 DAYS.
3. REINFORCING: TOP MAT #4 @ 18" O.C. E.W. BOTTOM MAT #4 @ 9" O.C. E.W. (GRADE 60)



Coating (Int):
 Coating (Ext):

Seam Up: Flat
 Seam Dn: Groove

Wall Thickness: 7"

Height (Ext): 15"

Weight (Net): 5098 lb
 Volume (Net): 1.3cu.yd