

Job Name: 25-1431 - Georgetown Commons  
 Job Location: Georgetown, KY  
 Contractor: Winwater Hartford KY Co.

Plant: Beaver Dam

Tech: J. Coppage

4/23/2026 11:30:24 AM

PC: A. Chambers



**Structure ID: DCI 2**

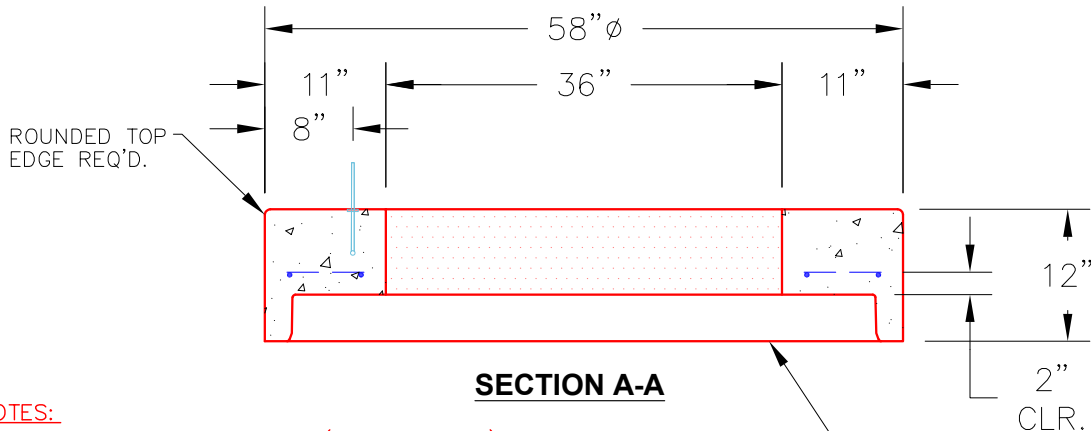
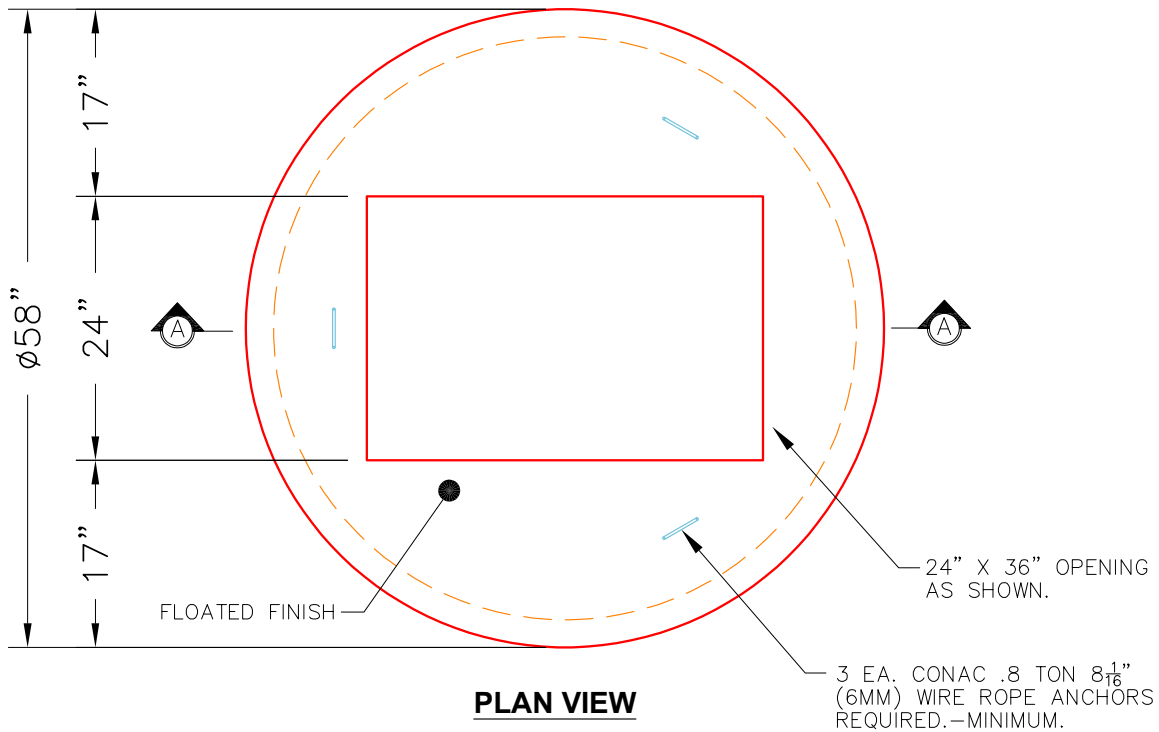
**P2 MH048LD12-24X36RECT**

**MH FLAT TOP w/24"x36" Hole**

- P3) 24" x 36" - CASTING HEIGHT - 6"
- P2) 48" - MH FLAT TOP w/24"x36" Hole - 12"
- P1) 48" - MH BASE - 72"
- 1) CASTING - HOE 470 SET (F/G/H)
- 1) 48" - Conseal CS-102 1.00"
- 1) 24" x 36" - Conseal CS-102 1.00"
- 2) Hole - 30
- 6) MH Step ML-10-TDS-NCR - 10"

- Structure Notes:**
1. JR HOE HOE-470 PROVIDED BY ICAST.
  2. PER ASTM C478 SPECIFICATIONS.
  3. CONCRETE = 4,000 PSI AT 28 DAYS.
  4. REINFORCING PER ASTM A615 (GRADE 60).
    - TOP SLAB (As .62) #5 BARS AT 6" C.C.E.W..
    - RISER/WALLS (As .12)
    - FLOOR (As .31) #5 BARS AT 12" C.C.E.W.

Structure Total: 7422 lb



- NOTES:**
1. MANUFACTURED TO ASTM C-478 (LATEST REVISION).
  2. CONCRETE: 5,000 PSI AT 28 DAYS.
  3. REINFORCING: #4 BAR @ 10" O.C. E.W. (GRADE 60).

Coating (Int):	Seam Up: Flat	Wall Thickness: 5"	Height (Ext): 12"	Weight (Net): 1300 lb
Coating (Ext):	Seam Dn: Groove			Volume (Net): 0.46cu.yd