

Job Name: 25-1431 - Georgetown Commons  
 Job Location: Georgetown, KY  
 Contractor: Winwater Hartford KY Co.

Plant: Beaver Dam

4/23/2026 11:30:44 AM

Tech: J. Coppage

PC: A. Chambers



**Structure ID: DCI 106**

**P2 MH072LD15-24X36RECT**

**MH FLAT TOP w/24"x36" Hole**

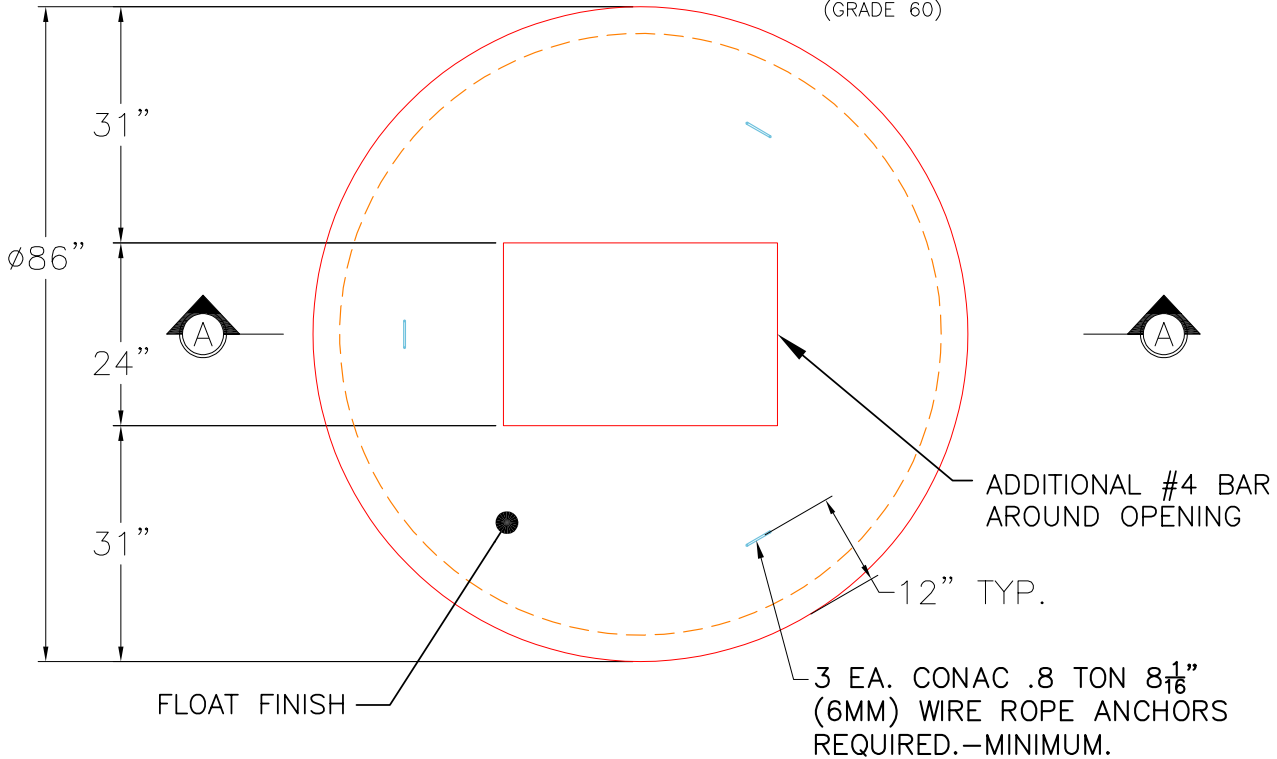
- P3) 24" x 36" - CASTING HEIGHT - 6"
- P2) 72" - MH FLAT TOP w/24"x36" Hole - 15"
- P1) 72" - MH BASE Custom Ht - 64"
- 1) CASTING - HOE 470 SET (F/G/H)
- 1) 72" - Conseal CS-102 1.00"
- 1) 24" x 36" - Conseal CS-102 1.00"
- 1) Hole - 46
- 1) Hole - 40
- 5) MH Step ML-10-TDS-NCR - 10"

- Structure Notes:**
1. JR HOE HOE-470 PROVIDED BY ICAST.
  2. PER ASTM C478 SPECIFICATIONS.
  3. CONCRETE = 4,000 PSI AT 28 DAYS.
  4. REINFORCING PER ASTM A615 (GRADE 60).
    - TOP SLAB (As .62) #5 BARS AT 6" C.C.E.W..
    - RISER/WALLS (As .18)
    - FLOOR (As .37) #5 BARS AT 10" C.C.E.W.

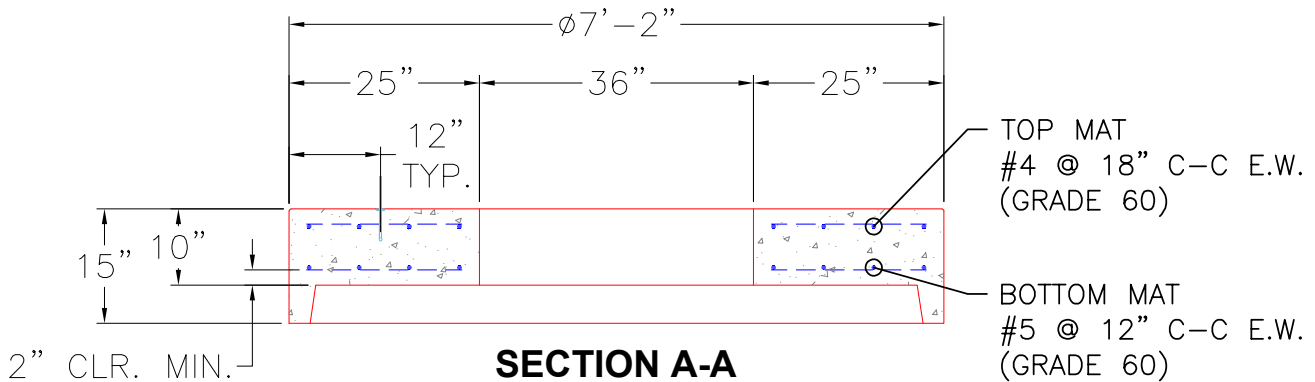
Structure Total: 16333 lb

GENERAL NOTES:

1. MANUFACTURED TO ASTM C-478 (LATEST REVISION).
2. CONCRETE 5,000 PSI AT 28 DAYS.
3. REINFORCING: AS SHOWN BELOW PER ASTM C-478 (GRADE 60)



**PLAN VIEW**



**SECTION A-A**

Coating (Int):  
 Coating (Ext):

Seam Up: Flat  
 Seam Dn: Groove

Wall Thickness: 7"

Height (Ext): 15"

Weight (Net): 4530 lb  
 Volume (Net): 1.16cu.yd