

Job Name: 25-1431 - Georgetown Commons
 Job Location: Georgetown, KY
 Contractor: Winwater Hartford KY Co.

Plant: Beaver Dam
 4/23/2026 11:30:43 AM

Tech: J. Copping
 PC: A. Chambers



Structure ID: DCI 105

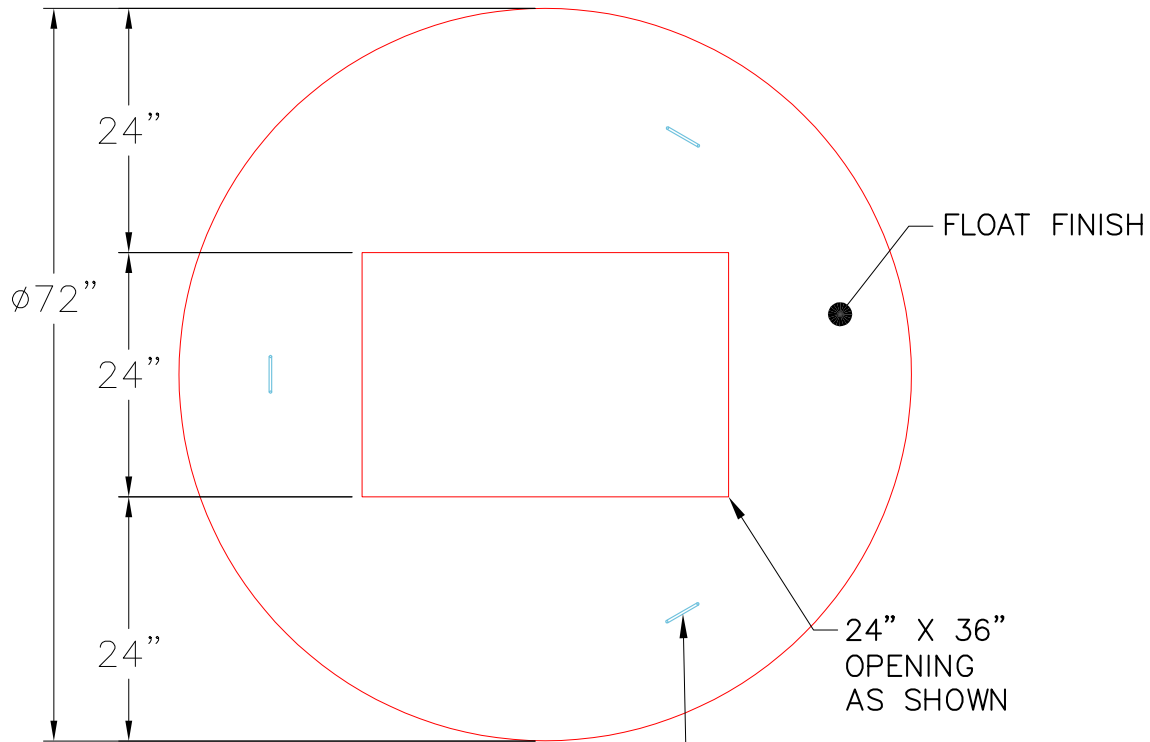
P2 MH060LD08-24X36RECT

MH FLAT TOP w/24"x36" Hole

- P3) 24" x 36" - CASTING HEIGHT - 6"
- P2) 60" - MH FLAT TOP w/24"x36" Hole - 8"
- P1) 60" - MH BASE - 54"
- 1) CASTING - HOE 470 SET (F/G/H)
- 1) 60" - Conseal CS-102 1.00"
- 1) 24" x 36" - Conseal CS-102 1.00"
- 2) Hole - 40
- 4) MH Step ML-10-TDS-NCR - 10"

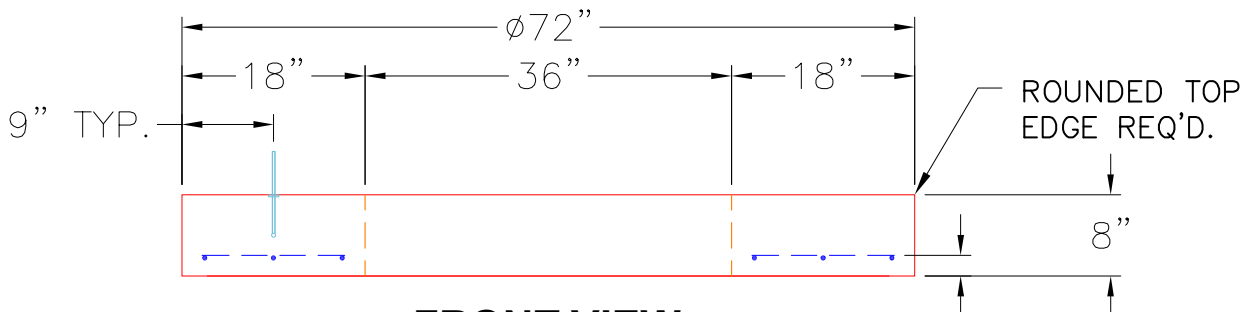
0 lb	Structure Notes:
2153 lb	1. JR HOE HOE-470 PROVIDED BY ICAST.
7007 lb	2. PER ASTM C478 SPECIFICATIONS.
394 lb	3. CONCRETE = 4,000 PSI AT 28 DAYS.
0 lb	4. REINFORCING PER ASTM A615 (GRADE 60).
0 lb	- TOP SLAB (As .62) #5 BARS AT 6" C.C.E.W..
0 lb	- RISER/WALLS (As .18)
0 lb	- FLOOR (As .37) #5 BARS AT 10" C.C.E.W.

Structure Total: 9554 lb	



TOP VIEW

3 EA. CONAC .8 TON 8¹/₁₆" (6MM) WIRE ROPE ANCHORS REQUIRED.-MINIMUM.



FRONT VIEW

- NOTES:**
1. MANUFACTURED TO ASTM C-478 (LATEST REVISION).
 2. CONCRETE: 5,000 PSI AT 28 DAYS.
 3. REINFORCING: #4 BAR @ 9" O.C. E.W. (GRADE 60).

Coating (Int): Coating (Ext):	Seam Up: Flat Seam Dn: Flat	Wall Thickness: 6"	Height (Ext): 8"	Weight (Net): 2153 lb Volume (Net): 0.55cu.yd
----------------------------------	--------------------------------	--------------------	------------------	--