

Job Name: 25-1431 - Georgetown Commons
Job Location: Georgetown, KY
Contractor: Winwater Hartford KY Co.

PC: A. Chambers
 TECH: J. Coppage
 Plant: Beaver Dam



Structure ID: **CBI 235**
 Spec: KYTC
 Type: CBI TYPE A (5')
 Size: 24" x 36"

Rim: 869.75'
 Invert: 859'
 Rim to Invert: 10.75'

Sump: 3"
 Floor (Top): 858.75'
 Floor Height: 8"

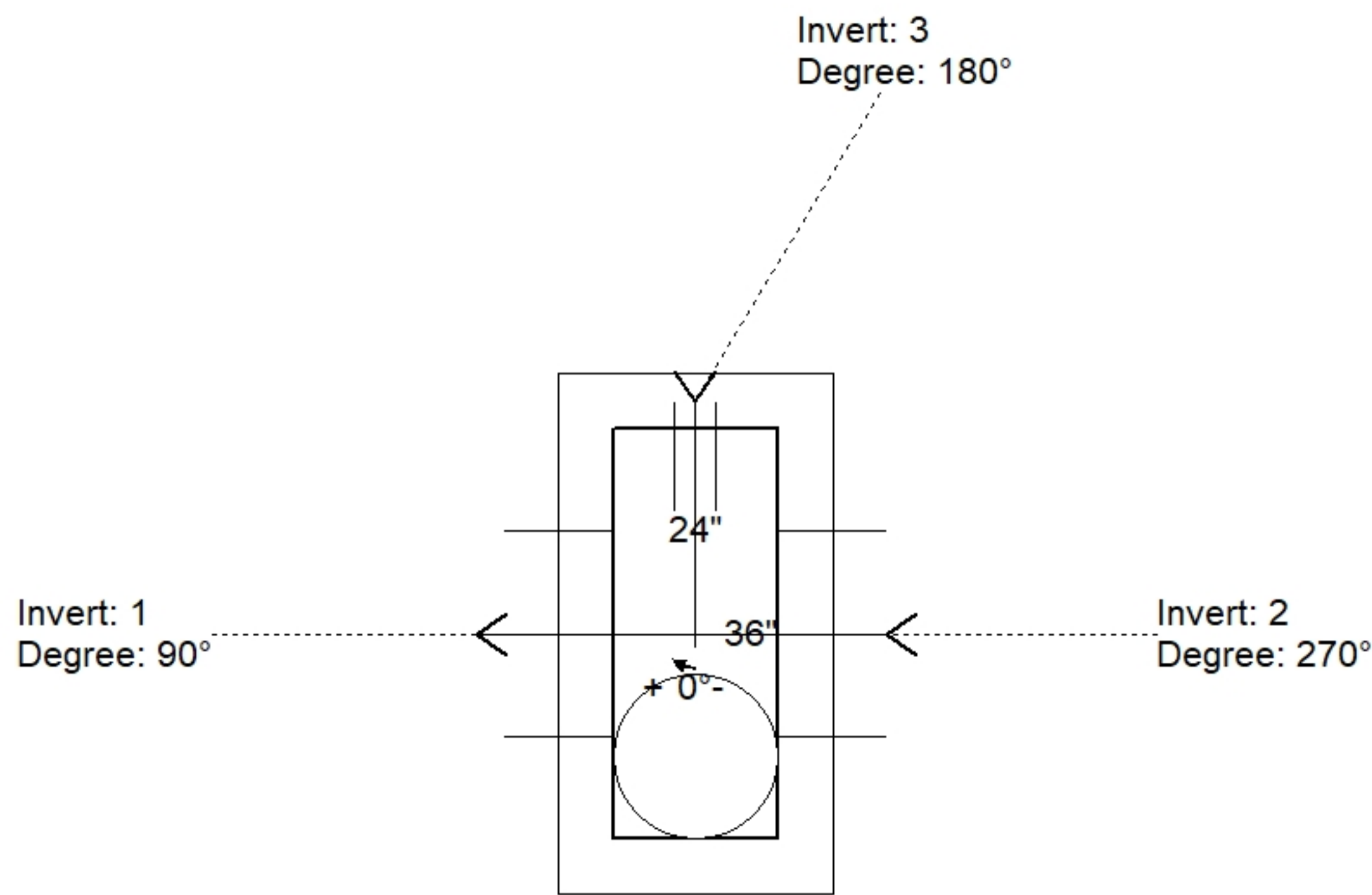
Floor (Bot): 858.083'
 Overall Height: 11.583'
 Slack: 1"

Structure Notes:

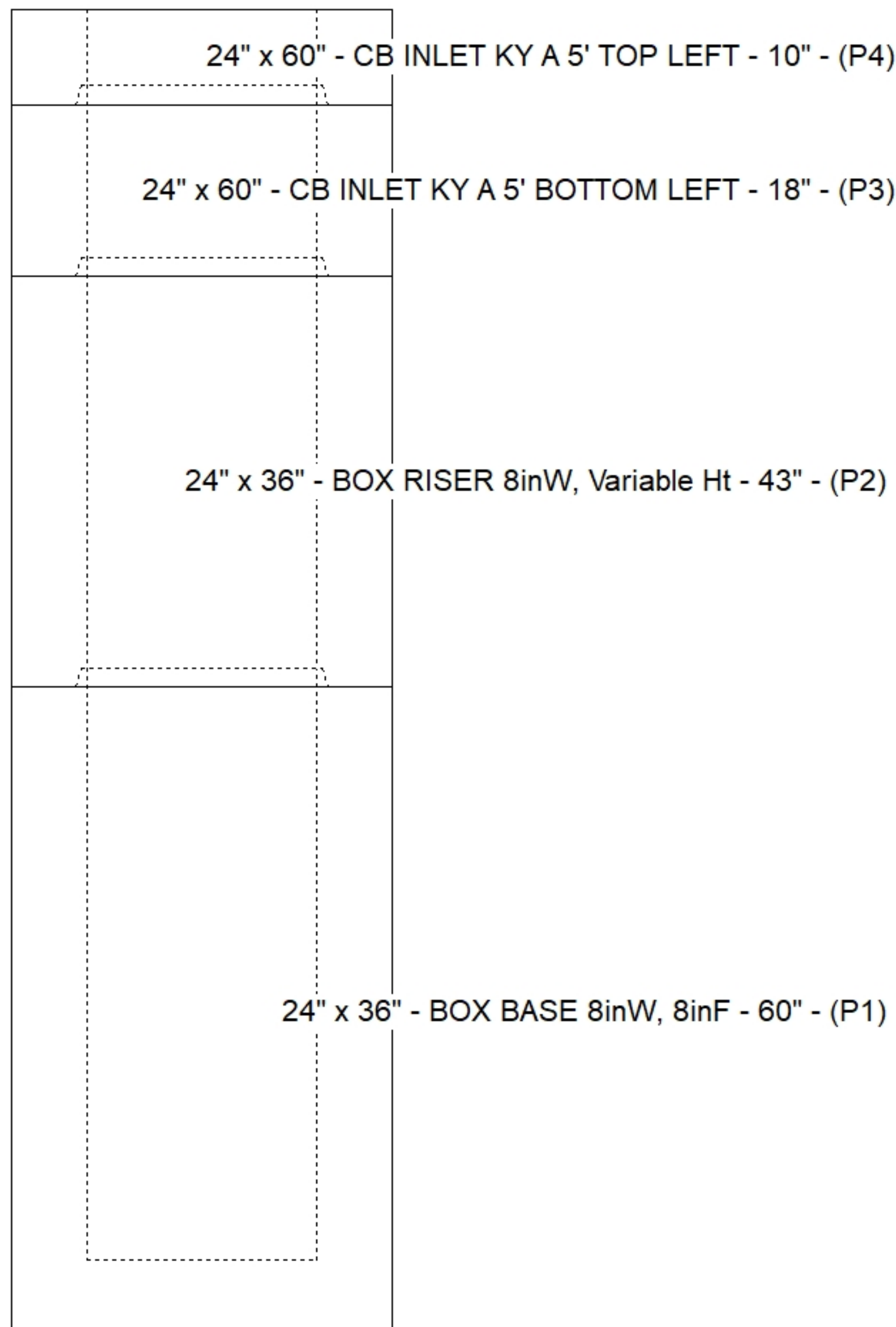
- JR HOE KY-206 PROVIDED BY ICAST.
- CASTING FRAME TO BE CAST INTO THE TOP PHASE.
- PER KYTC CBI TYPE A / ASTM C913 SPEC'S.
- CONCRETE = 4,000 PI AT 28 DAYS.
- REINFORCING PER ASTM A615 (GRADE 60).
 - TOP PHASE (As .62) #5 BARS AT 6" C.C.E.W.
 - WALLS (As .31) #5 BARS AT 12" C.C.E.W.
 - FLOOR (As .31) #5 BARS AT 12" C.C.E.W.

STRUCTURE SUMMARY:

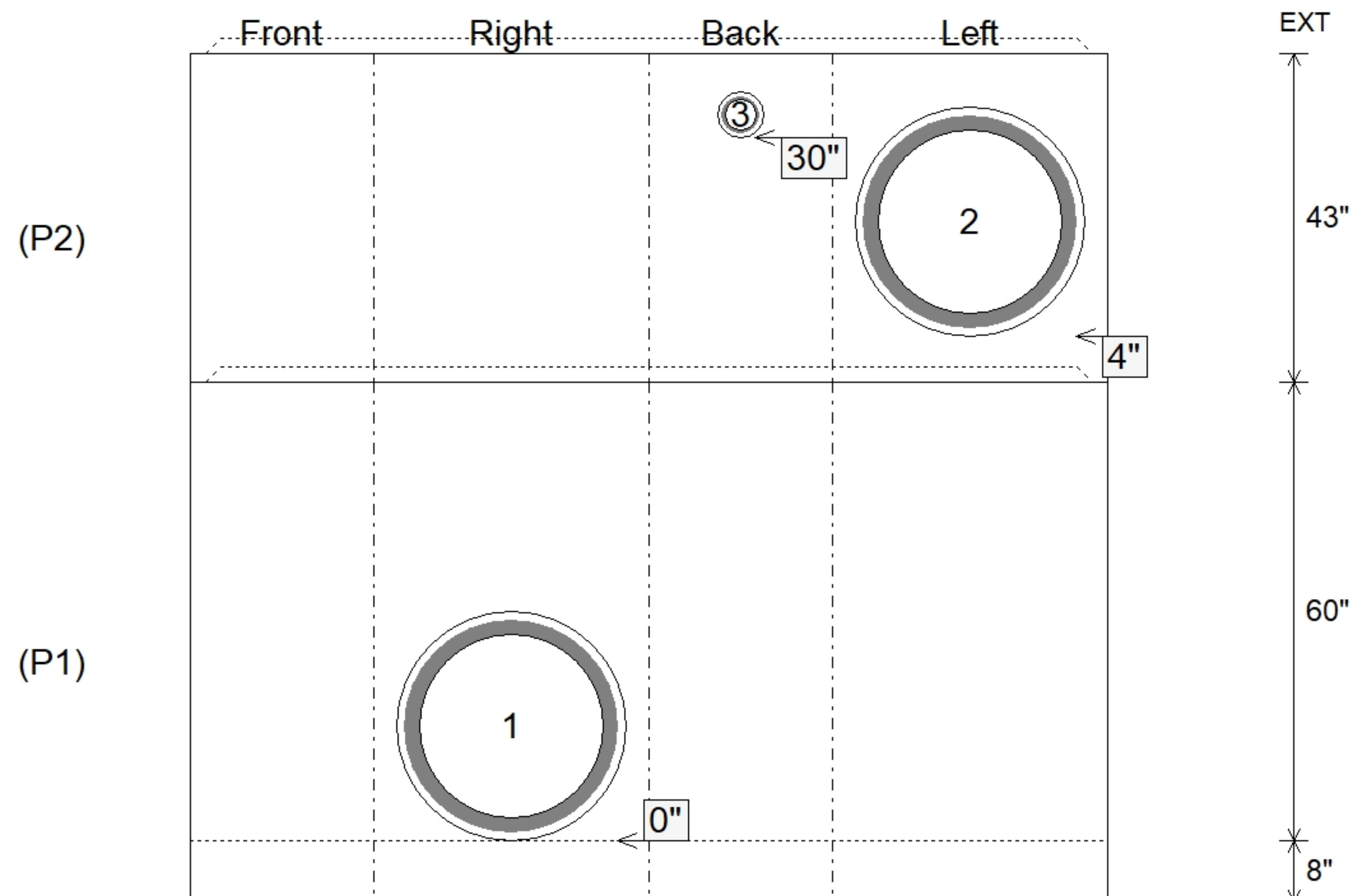
P4) 24" x 60" - CB INLET KY A 5' TOP LEFT - 10"	1895 lb
P3) 24" x 60" - CB INLET KY A 5' BOTTOM LEFT - 18"	2670 lb
P2) 24" x 36" - BOX RISER 8inW, Variable Ht - 43"	3894 lb
P1) 24" x 36" - BOX BASE 8inW, 8inF - 60"	7044 lb
2) 24" x 36" - Conseal CS-102 1.00"	0 lb
2) Hole - 30	0 lb
1) Hole - 6	0 lb
Structure Total:	15503 lb



Position	Elev	Angle	Pipe	Pipe OD	Hole	Connector	Up ()	Ref
Rim	869.75'							
Reducer								
Invert 1	859'	90°	24" HDPE	27.8"	30"	Hole 30	0"	P1
Invert 2	864.5'	270°	24" HDPE	27.8"	30"	Hole 30	4"	P2
Invert 3	866.5'	180°	4" HDPE (perf pipe)	4.8"	6"	Hole 6	30"	P2
Invert 4								
Invert 5								
Invert 6								
Invert 7								
Invert 8								



Default - Interior Dimensions



Submittal Drawing
 4/10/2026 10:35:17 AM

SUBMITTAL
 APPROVED BY: