

Job Name: 25-1431 - Georgetown Commons  
 Job Location: Georgetown, KY  
 Contractor: Winwater Hartford KY Co.

Plant: Beaver Dam  
 4/9/2026 12:34:28 PM

Tech: J. Coppage  
 PC: A. Chambers



**Structure ID: CBI 235**

**P2 BX2436-08R-VH**

**BOX RISER 8inW, Variable Ht**

- P4) 24" x 60" - CB INLET KY A 5' TOP LEFT - 10"
- P3) 24" x 60" - CB INLET KY A 5' BOTTOM LEFT - 18"
- P2) 24" x 36" - BOX RISER 8inW, Variable Ht - 43"
- P1) 24" x 36" - BOX BASE 8inW, 8inF - 60"
- 2) 24" x 36" - Conseal CS-102 1.00"
- 2) Hole - 30
- 1) Hole - 6

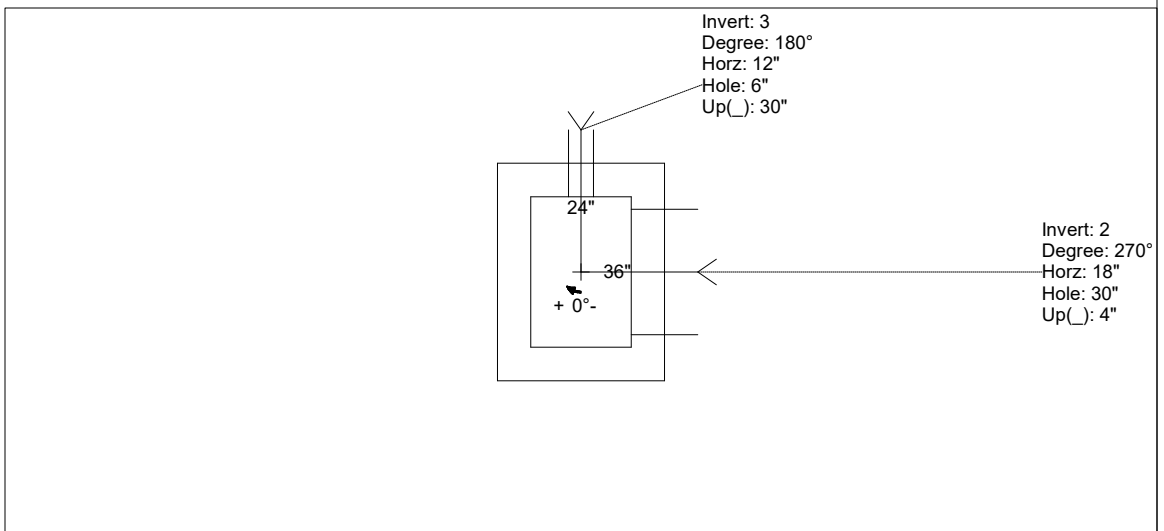
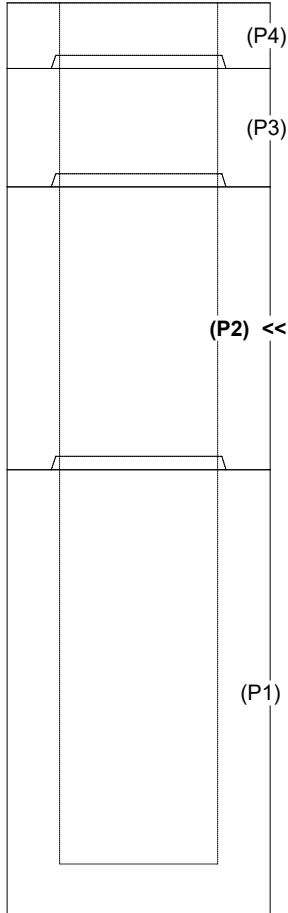
- 1895 lb  
 2670 lb  
 3894 lb  
 7044 lb  
 0 lb  
 0 lb  
 0 lb
- Structure Notes:  
 1. JR HOE KY-206 PROVIDED BY ICAST.  
 2. CASTING FRAME TO BE CAST INTO THE TOP PHASE.  
 3. PER KYTC CBI TYPE A / ASTM C913 SPEC'S.  
 4. CONCRETE = 4,000 PI AT 28 DAYS.  
 5. REINFORCING PER ASTM A615 (GRADE 60).  
 - TOP PHASE (As .62) #5 BARS AT 6" C.C.E.W.  
 - WALLS (As .31) #5 BARS AT 12" C.C.E.W.  
 - FLOOR (As .31) #5 BARS AT 12" C.C.E.W.

Structure Total: 15503 lb

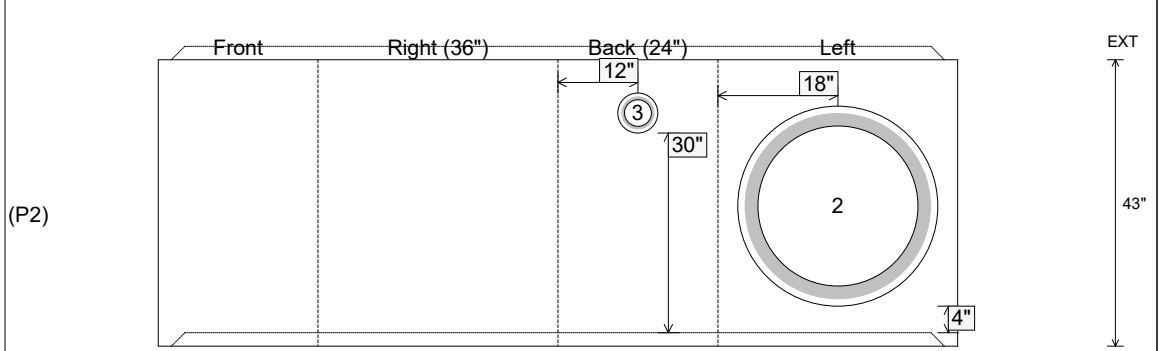
Rim: 869.75' Rim to Invert: 10.75' Slack: 1" Sump: 3" Step Position:

Position	Elev	Angle	Ext. (cw)	Pipe	Pipe OD	Connector	Hole	Horz Size	Up ( )	Offset
Invert 1										
Invert 2	864.5'	270°	26"	24" HDPE	27.8"	Hole 30	30"	30"	4"	0"
Invert 3	866.5'	180°	20"	4" HDPE (perf pipe)	4.8"	Hole 6	6"	6"	30"	0"
Invert 4										
Invert 5										
Invert 6										
Invert 7										
Invert 8										

**RIGHT-SIDE UP VIEW (int. dimensions)**



**INSIDE WALL DIMENSIONS**



Coating (Int): Coating (Ext):	Seam Up: Tongue Seam Dn: Groove	Wall Thickness: 8" Floor Height: 0"	Height (Int): 43" Height (Ext): 43"	Weight (Net): 3894 lb Volume (Net): 1cu.yd
----------------------------------	------------------------------------	--	--	---