

Job Name: 25-1431 - Georgetown Commons
 Job Location: Georgetown, KY
 Contractor: Winwater Hartford KY Co.

Plant: Beaver Dam

Tech: J. Coppage

4/22/2026 9:12:43 AM

PC: A. Chambers



Structure ID: CBI 234

P1 BX3636-08BAVF

BOX BASE 8inW, 8inF, Variable Ht

- P4) 24" x 60" - CB INLET KY A 5' TOP LEFT - 10"
- P3) 24" x 60" - CB INLET KY A 5' BOTTOM LEFT - 18"
- P2) 36" x 36" - CB FT REDUCER 24"X36" HOLE - 8"
- P1) 36" x 36" - BOX BASE 8inW, 8inF, Variable Ht - 28"
- 1) 36" x 36" - Conseal CS-102 1.00"
- 1) 24" x 36" - Conseal CS-102 1.00"
- 2) DOGHOUSE INVRTD - 30"x28"
- 1) DOGHOUSE INVRTD - 6"x6"

- Structure Notes:**
1. JR HOE KY-206 PROVIDED BY ICAST.
 2. CASTING FRAME TO BE CAST INTO THE TOP PHASE.
 3. PER KYTC CBI TYPE A / ASTM C913 SPEC'S.
 4. CONCRETE = 4,000 PI AT 28 DAYS.
 5. REINFORCING PER ASTM A615 (GRADE 60).
 - TOP PHASE (As .62) #5 BARS AT 6" C.C.E.W.
 - WALLS (As .31) #5 BARS AT 12" C.C.E.W.
 - FLOOR (As .31) #5 BARS AT 12" C.C.E.W.

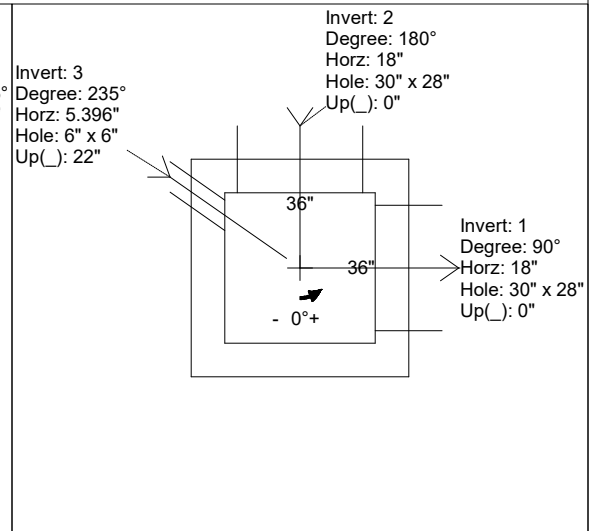
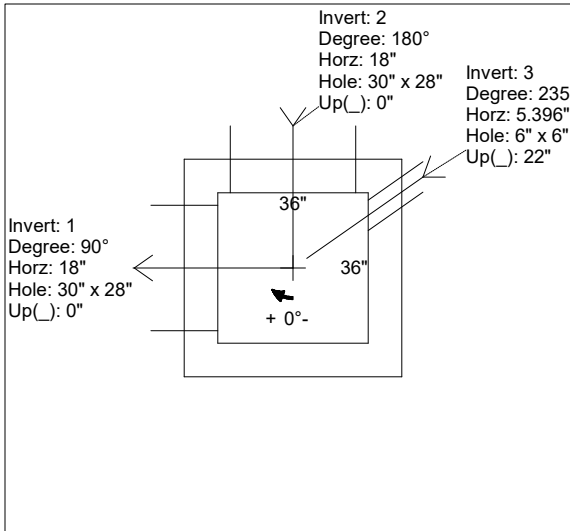
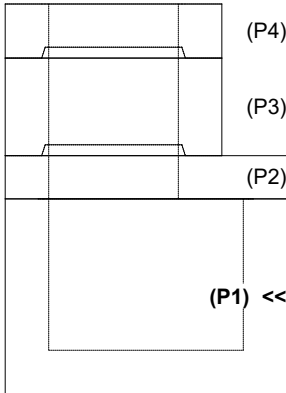
Structure Total: 9890 lb

Rim: 869.75' Rim to Invert: 5.17' Slack: 0.04" Sump: 2" Step Position:

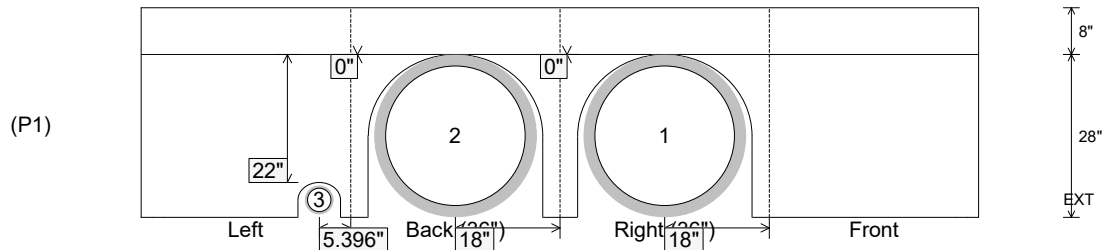
Position	Elev	Angle	Ext. (cw)	Pipe	Pipe OD	Connector	Hole	Horz Size	Up (L)	Offset
Invert 1	864.58'	90°	26"	24" HDPE	27.8"	DOGHOUSE INVRTD 30"x28"	30" x 28"	30"	0"	0"
Invert 2	864.58'	180°	26"	24" HDPE	27.8"	DOGHOUSE INVRTD 30"x28"	30" x 28"	30"	0"	0"
Invert 3	866.33'	235°	7.795"	4" HDPE (perf pipe)	4.8"	DOGHOUSE INVRTD 6"x6"	6" x 6"	7.325"	22"	0"
Invert 4										
Invert 5										
Invert 6										
Invert 7										
Invert 8										

RIGHT-SIDE UP VIEW (int. dimensions)

UPSIDE-DOWN VIEW (int. dimensions)



INSIDE WALL DIMENSIONS



Coating (Int):
Coating (Ext):

Seam Up: Flat
Seam Dn: n/a

Wall Thickness: 8"
Floor Height: 8"

Height (Int): 28"
Height (Ext): 36"

Weight (Net): 4090 lb
Volume (Net): 1.04cu.yd