

Job Name: 25-1431 - Georgetown Commons
 Job Location: Georgetown, KY
 Contractor: Winwater Hartford KY Co.

Plant: Beaver Dam
 4/22/2026 9:16:54 AM

Tech: J. Coppage
 PC: A. Chambers



Structure ID: CBI 232

P2 BX036048-08TS024036

CB FT REDUCER 24"X36" HOLE

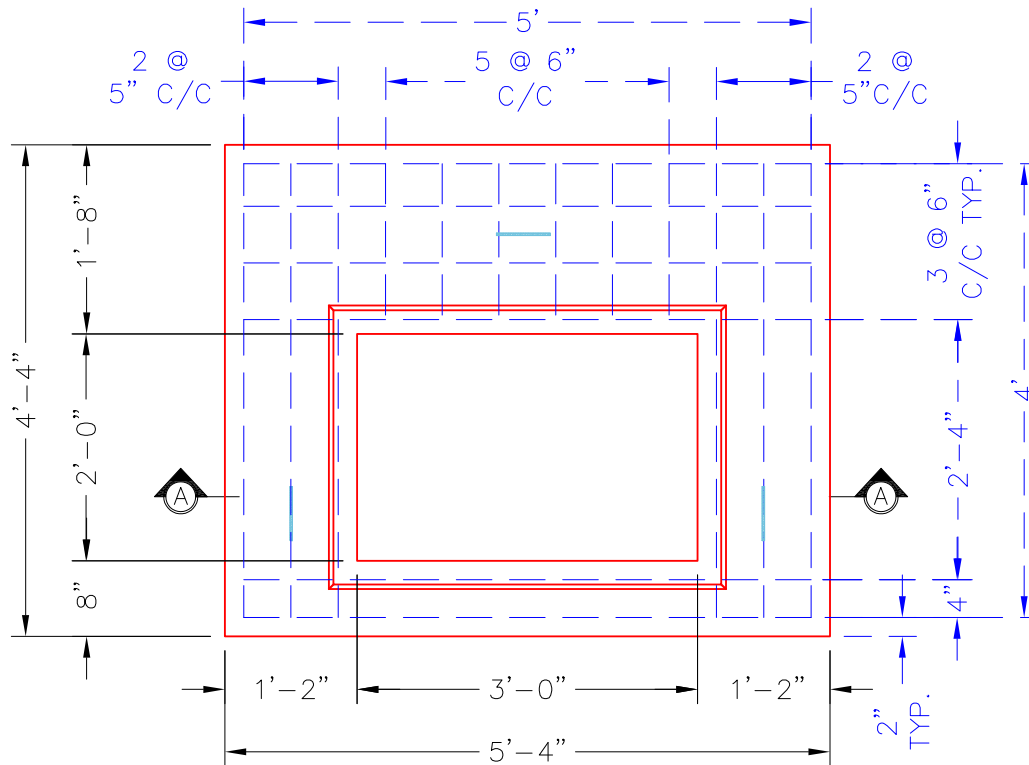
- P4) 24" x 60" - CB INLET KY A 5' TOP LEFT - 10"
- P3) 24" x 60" - CB INLET KY A 5' BOTTOM LEFT - 18"
- P2) 36" x 48" - CB FT REDUCER 24"X36" HOLE - 8"
- P1) 36" x 48" - BOX BASE 8inW, 8inF, Variable Ht - 46"
- 1) 36" x 48" - Conseal CS-102 1.00"
- 1) 24" x 36" - Conseal CS-102 1.00"
- 2) Hole - 30
- 1) Hole - 20
- 1) DOGHOUSE INVRTD - 6"x6"

1895 lb
 2670 lb
 1654 lb
 7183 lb
 0 lb
 0 lb
 0 lb
 0 lb
 0 lb
 0 lb

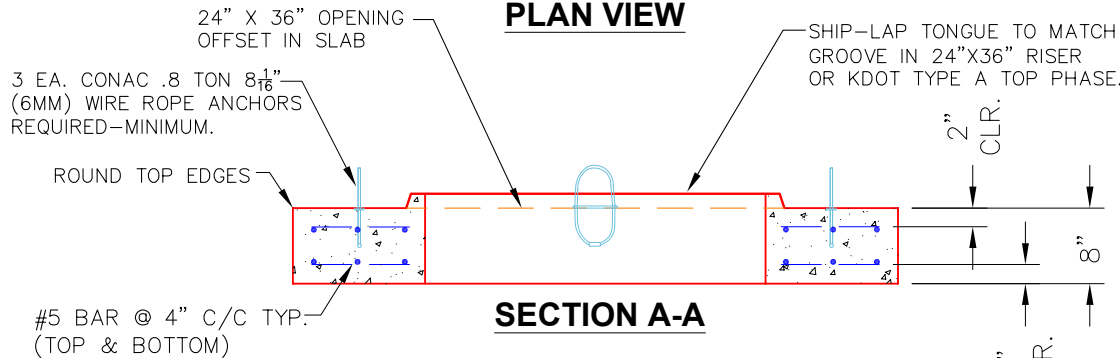
Structure Total: 13402 lb

Structure Notes:

1. JR HOE KY-206 PROVIDED BY ICAST.
2. CASTING FRAME TO BE CAST INTO THE TOP PHASE.
3. PER KYTC CBI TYPE A / ASTM C913 SPEC'S.
4. CONCRETE = 4,000 PI AT 28 DAYS.
5. REINFORCING PER ASTM A615 (GRADE 60).
 - TOP PHASE (As .62) #5 BARS AT 6" C.C.E.W.
 - WALLS (As .31) #5 BARS AT 12" C.C.E.W.
 - FLOOR (As .31) #5 BARS AT 12" C.C.E.W.



PLAN VIEW



SECTION A-A

NOTES:

- CONCRETE: 4500 PSI @ 28 DAYS.
- MANUFACTURED TO KYTC & ASTM C-913 SPECIFICATIONS.
- REINFORCING: #5 BAR AS SHOWN-GRADE 60. (TOP & BOTTOM LAYER)
- 3 EA. CONAC WIRE LOOP LIFTS REQUIRED (MIN.)

#5 BAR CUT LIST

- 12 EA. @ 60" LG.
- 12 EA. @ 48" LG.
- 12 EA. @ 16" LG.

Coating (Int):
 Coating (Ext):

Seam Up: Tongue
 Seam Dn: Flat

Wall Thickness: 8"

Height (Ext): 8"

Weight (Net): 1654 lb
 Volume (Net): 0.42cu.yd