

Job Name: 25-1431 - Georgetown Commons  
 Job Location: Georgetown, KY  
 Contractor: Winwater Hartford KY Co.

Plant: Beaver Dam  
 4/22/2026 9:16:53 AM

Tech: J. Coppage  
 PC: A. Chambers



**Structure ID: CBI 231**

**P2 BX048048-08TS024036**

**CB FT REDUCER 24"X36" HOLE**

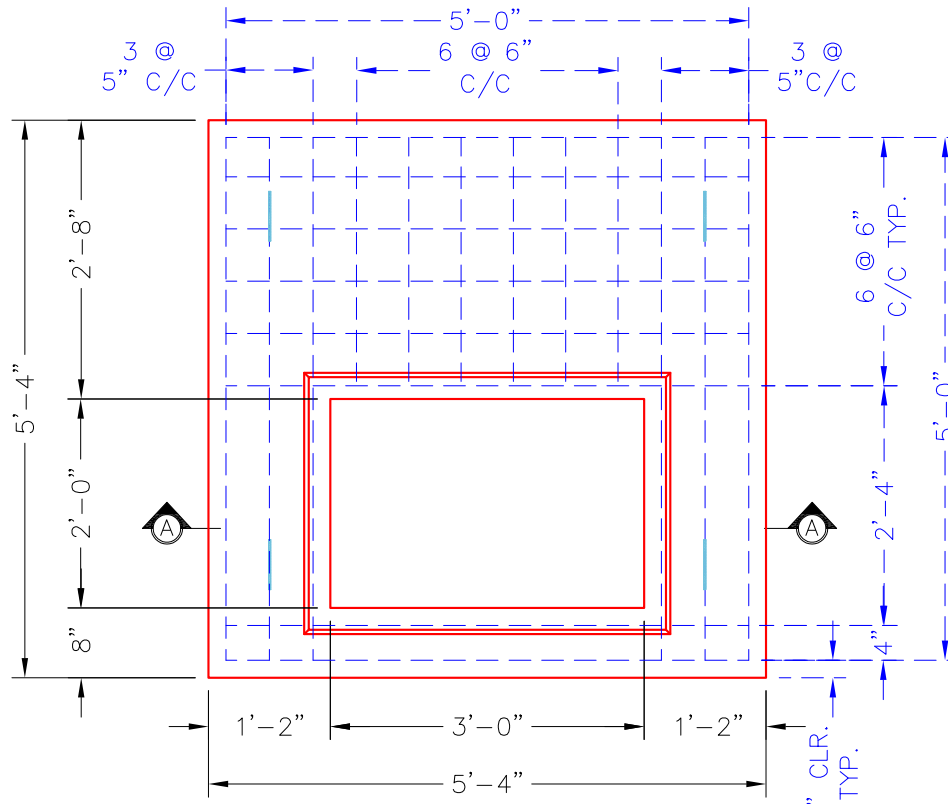
- P4) 24" x 60" - CB INLET KY A 5' TOP LEFT - 10"
- P3) 24" x 60" - CB INLET KY A 5' BOTTOM LEFT - 18"
- P2) 48" x 48" - CB FT REDUCER 24"X36" HOLE - 8"
- P1) 48" x 48" - BOX BASE 8inW, 8inF, Variable Ht - 68"
- 1) 48" x 48" - Conseal CS-102 1.00"
- 1) 24" x 36" - Conseal CS-102 1.00"
- 1) Hole - 30
- 1) DOGHOUSE INVRTD - 20"x18"
- 1) Hole - 24
- 1) DOGHOUSE INVRTD - 6"x6"

1895 lb  
 2670 lb  
 2170 lb  
 11778 lb  
 0 lb  
 0 lb  
 0 lb  
 0 lb  
 0 lb  
 0 lb  
 0 lb  
 0 lb  
 18512 lb

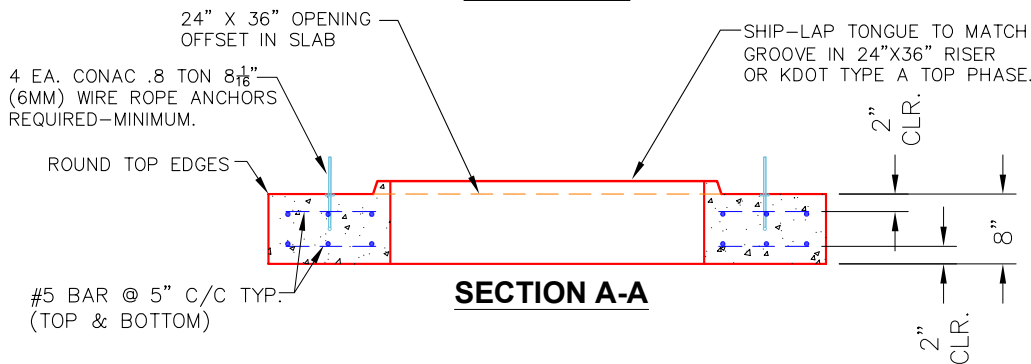
Structure Total:

**Structure Notes:**

1. JR HOE KY-206 PROVIDED BY ICAST.
2. CASTING FRAME TO BE CAST INTO THE TOP PHASE.
3. PER KYTC CBI TYPE A / ASTM C913 SPEC'S.
4. CONCRETE = 4,000 PI AT 28 DAYS.
5. REINFORCING PER ASTM A615 (GRADE 60).
  - TOP PHASE (As .62) #5 BARS AT 6" C.C.E.W.
  - WALLS (As .31) #5 BARS AT 12" C.C.E.W.
  - FLOOR (As .31) #5 BARS AT 12" C.C.E.W.



**PLAN VIEW**



**SECTION A-A**

**NOTES:**

- CONCRETE: 4500 PSI @ 28 DAYS.
- MANUFACTURED TO KYTC & ASTM C-913 SPECIFICATIONS.
- REINFORCING: #5 BAR AS SHOWN-GRADE 60. (T&B LAYER)
- 4 EA. CONCAC WIRE LIFTING LOOPS REQUIRED (MIN.).

**#5 BAR CUT LIST**  
 28 EA. @ 60" LG.  
 12 EA. @ 28" LG.

Coating (Int): Coating (Ext):	Seam Up: Tongue Seam Dn: Flat	Wall Thickness: 8"	Height (Ext): 8"	Weight (Net): 2170 lb Volume (Net): 0.55cu.yd
----------------------------------	----------------------------------	--------------------	------------------	--