

Job Name: 25-1431 - Georgetown Commons
 Job Location: Georgetown, KY
 Contractor: Winwater Hartford KY Co.

Plant: Beaver Dam

4/23/2026 11:30:51 AM

Tech: J. Coppage

PC: A. Chambers



Structure ID: CBI 203

P2 BX060060-10TS024036

CB FT REDUCER 24"X36" HOLE

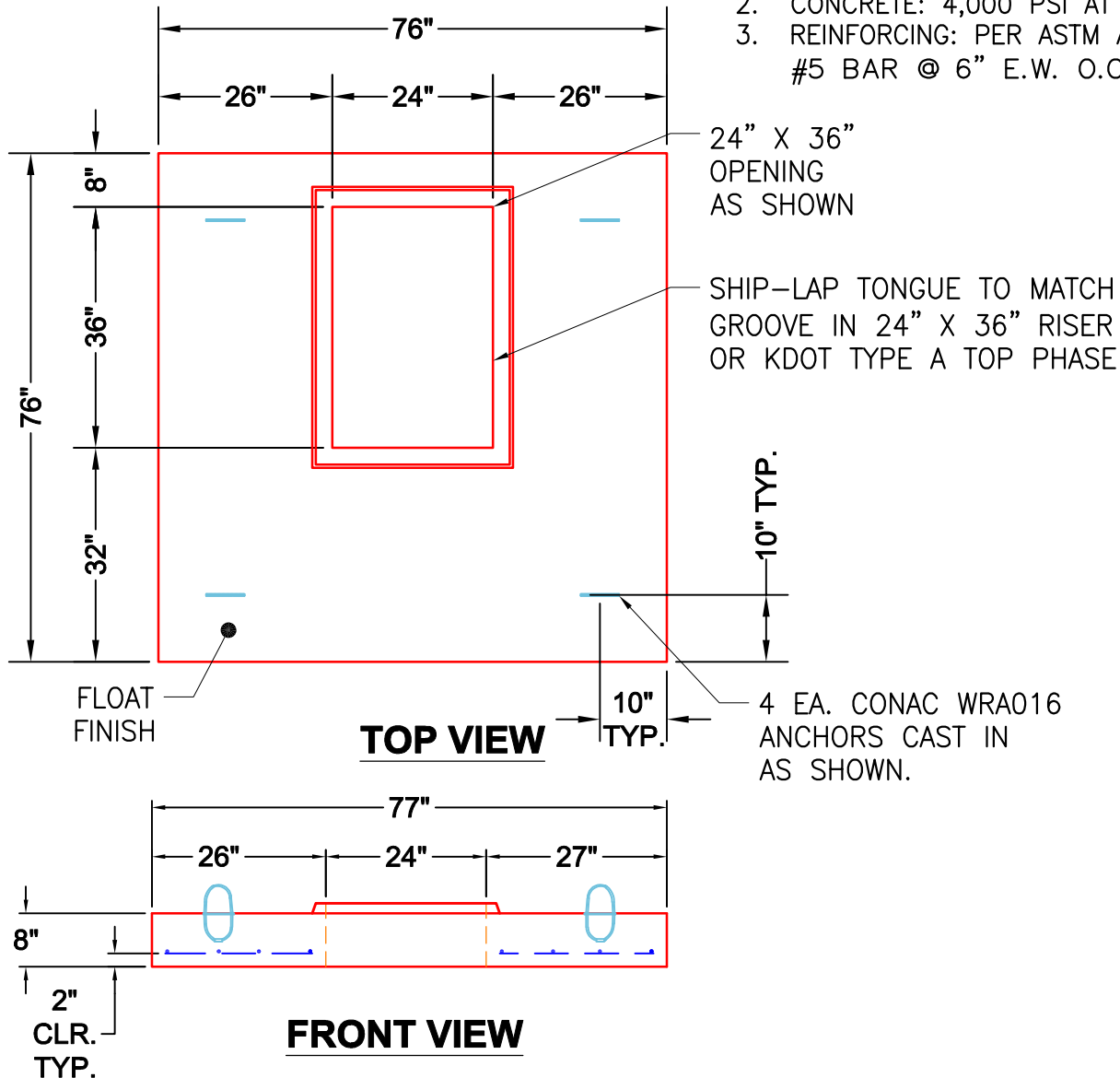
- P5) 24" x 60" - CB INLET KY A 5' TOP LEFT - 10"
- P4) 24" x 60" - CB INLET KY A 5' BOTTOM LEFT - 18"
- P3) 24" x 36" - BOX RISER 8inW - 42"
- P2) 60" x 60" - CB FT REDUCER 24"X36" HOLE - 10"
- P1) 60" x 60" - BOX BASE 8inW, 8inF, Variable Ht - 96"
- 1) 60" x 60" - Conseal CS-102 1.00"
- 2) 24" x 36" - Conseal CS-102 1.00"
- 1) Hole - 64
- 1) Hole - 40
- 1) Hole - 56
- 1) Hole - 6

- 1895 lb
 2670 lb
 4267 lb
 4122 lb
 17290 lb
 0 lb
 0 lb
 0 lb
 0 lb
 0 lb
 0 lb
- Structure Notes:**
1. JR HOE KY-206 PROVIDED BY ICAST.
 2. CASTING FRAME TO BE CAST INTO THE TOP PHASE.
 3. PER KYTC CBI TYPE A / ASTM C478 SPEC'S.
 4. CONCRETE = 4,000 PI AT 28 DAYS.
 5. REINFORCING PER ASTM A615 (GRADE 60).
 - TOP PHASE (As .62) #5 BARS AT 6" C.C.E.W.
 - WALLS (As .31) #5 BARS AT 12" C.C.E.W.
 - FLOOR (As .31) #5 BARS AT 12" C.C.E.W.

Structure Total: 30243 lb

GENERAL NOTES:

1. MANUFACTURED TO ASTM C-913 (LATEST REVISION).
2. CONCRETE: 4,000 PSI AT 28 DAYS.
3. REINFORCING: PER ASTM A615 #5 BAR @ 6" E.W. O.C. (GRADE 60).



Coating (Int): Coating (Ext):	Seam Up: Tongue Seam Dn: Flat	Wall Thickness: 8"	Height (Ext): 10"	Weight (Net): 4122 lb Volume (Net): 1.05cu.yd
----------------------------------	----------------------------------	--------------------	-------------------	--