

Job Name: 25-1431 - Georgetown Commons
 Job Location: Georgetown, KY
 Contractor: Winwater Hartford KY Co.

Plant: Beaver Dam

Tech: J. Coppage

4/23/2026 11:20:35 AM

PC: A. Chambers



Structure ID: CBI 202

P1 BX6060-08BAVF

BOX BASE 8inW, 8inF, Variable Ht

- P5) 24" x 60" - CB INLET KY A 5' TOP RIGHT - 10"
 - P4) 24" x 60" - CB INLET KY A 5' BOTTOM RIGHT - 18"
 - P3) 24" x 36" - BOX RISER 8inW, Variable Ht - 55"
 - P2) 60" x 60" - CB FT REDUCER 24"X36" HOLE - 10"
 - P1) 60" x 60" - BOX BASE 8inW, 8inF, Variable Ht - 70"
- 1) SECONDARY POUR - WALLS
 - 1) 60" x 60" - Conseal CS-102 1.00"
 - 2) 24" x 36" - Conseal CS-102 1.00"
 - 2) Hole - 56
 - 1) Hole - 20
 - 1) Hole - 6

1895 lb
 2670 lb
 5593 lb
 4122 lb
 13141 lb
 0 lb
 0 lb
 0 lb
 0 lb
 0 lb
 0 lb

 Structure Total: 27421 lb

Structure Notes:

1. JR HOE KY-206 PROVIDED BY ICAST.
2. CASTING FRAME TO BE CAST INTO THE TOP PHASE.
3. PER KYTC CBI TYPE A / ASTM C913 SPEC'S.
4. CONCRETE = 4,000 PI AT 28 DAYS.
5. REINFORCING PER ASTM A615 (GRADE 60).
 - TOP PHASE (As .62) #5 BARS AT 6" C.C.E.W.
 - WALLS (As .31) #5 BARS AT 12" C.C.E.W.
 - FLOOR (As .31) #5 BARS AT 12" C.C.E.W.

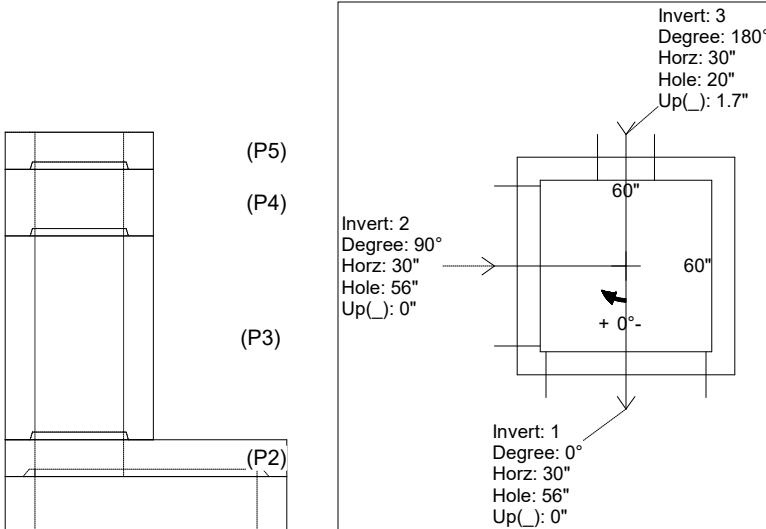
FIRST POUR DRAWING

Rim: 877.83' Rim to Invert: 13.33' Slack: 1.16" Sump: 4.2" Step Position:

Position	Elev	Angle	Ext. (cw)	Pipe	Pipe OD	Connector	Hole	Horz Size	Up (Δ)	Offset
Invert 1	864.5'	0°	38"	48" HDPE	53.5"	Hole 56	56"	56"	0"	0"
Invert 2	864.5'	90°	38"	48" HDPE	53.5"	Hole 56	56"	56"	0"	0"
Invert 3	864.5'	180°	38"	15" HDPE	17.6"	Hole 20	20"	20"	1.7"	0"
Invert 4										
Invert 5										
Invert 6										
Invert 7										
Invert 8										

RIGHT-SIDE UP VIEW (int. dimensions)

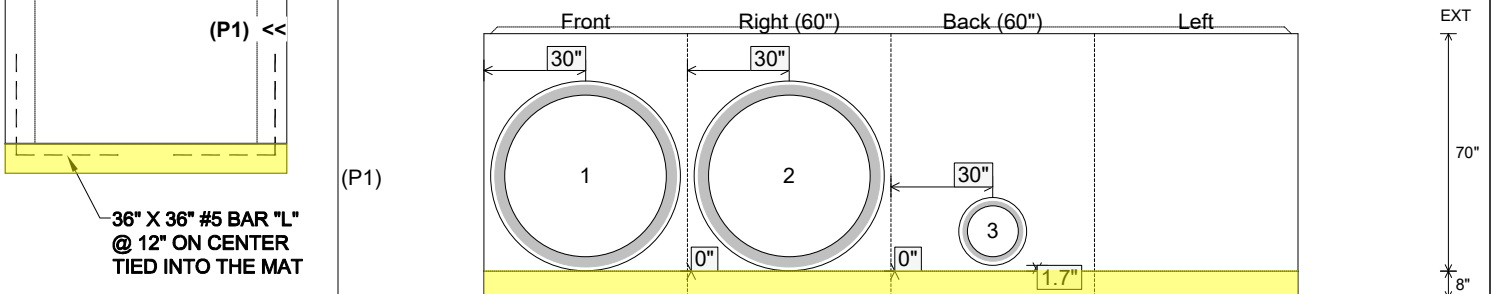
UPSIDE-DOWN VIEW (int. dimensions)



WEIGHTS:

FIRST POUR - 3,877 LBS.
SECOND POUR - 9,264 LBS.
TOTAL - 13,141 LBS.

INSIDE WALL DIMENSIONS



36" X 36" #5 BAR "L"
 @ 12" ON CENTER
 TIED INTO THE MAT

Coating (Int):
 Coating (Ext):

Seam Up: Tongue
 Seam Dn: n/a

Wall Thickness: 8"
 Floor Height: 8"

Height (Int): 70"
 Height (Ext): 78"

Weight (Net): 13141 lb
 Volume (Net): 3.36cu.yd

Job Name: 25-1431 - Georgetown Commons
 Job Location: Georgetown, KY
 Contractor: Winwater Hartford KY Co.

Plant: Beaver Dam

Tech: J. Coppage

4/23/2026 11:20:35 AM

PC: A. Chambers



Structure ID: CBI 202

P1 BX6060-08BAVF

BOX BASE 8inW, 8inF, Variable Ht

- P5) 24" x 60" - CB INLET KY A 5' TOP RIGHT - 10"
 - P4) 24" x 60" - CB INLET KY A 5' BOTTOM RIGHT - 18"
 - P3) 24" x 36" - BOX RISER 8inW, Variable Ht - 55"
 - P2) 60" x 60" - CB FT REDUCER 24"X36" HOLE - 10"
 - P1) 60" x 60" - BOX BASE 8inW, 8inF, Variable Ht - 70"
- 1) SECONDARY POUR - WALLS
- 1) 60" x 60" - Conseal CS-102 1.00"
 - 2) 24" x 36" - Conseal CS-102 1.00"
 - 2) Hole - 56
 - 1) Hole - 20
 - 1) Hole - 6

1895 lb
 2670 lb
 5593 lb
 4122 lb
 13141 lb
 0 lb
 0 lb
 0 lb
 0 lb
 0 lb
 0 lb

 Structure Total: 27421 lb

Structure Notes:

1. JR HOE KY-206 PROVIDED BY ICAST.
2. CASTING FRAME TO BE CAST INTO THE TOP PHASE.
3. PER KYTC CBI TYPE A / ASTM C913 SPEC'S.
4. CONCRETE = 4,000 PI AT 28 DAYS.
5. REINFORCING PER ASTM A615 (GRADE 60).
 - TOP PHASE (As .62) #5 BARS AT 6" C.C.E.W.
 - WALLS (As .31) #5 BARS AT 12" C.C.E.W.
 - FLOOR (As .31) #5 BARS AT 12" C.C.E.W.

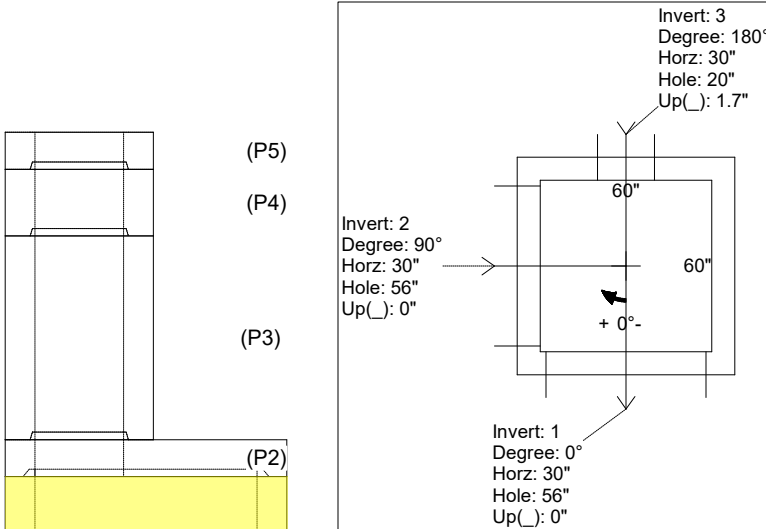
SECOND POUR DRAWING

Rim: 877.83' Rim to Invert: 13.33' Slack: 1.16" Sump: 4.2" Step Position:

Position	Elev	Angle	Ext. (cw)	Pipe	Pipe OD	Connector	Hole	Horz Size	Up (↓)	Offset
Invert 1	864.5'	0°	38"	48" HDPE	53.5"	Hole 56	56"	56"	0"	0"
Invert 2	864.5'	90°	38"	48" HDPE	53.5"	Hole 56	56"	56"	0"	0"
Invert 3	864.5'	180°	38"	15" HDPE	17.6"	Hole 20	20"	20"	1.7"	0"
Invert 4										
Invert 5										
Invert 6										
Invert 7										
Invert 8										

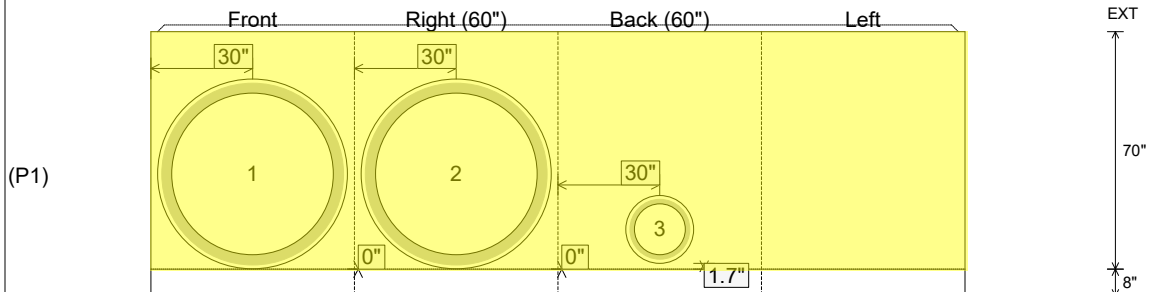
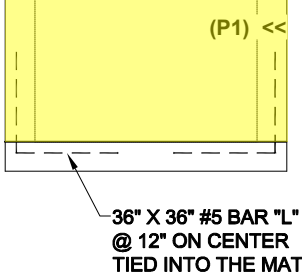
RIGHT-SIDE UP VIEW (int. dimensions)

UPSIDE-DOWN VIEW (int. dimensions)



WEIGHTS:
FIRST POUR - 3,877 LBS.
SECOND POUR - 9,264 LBS.
TOTAL - 13,141 LBS.

INSIDE WALL DIMENSIONS



Coating (Int):
 Coating (Ext):

Seam Up: Tongue
 Seam Dn: n/a

Wall Thickness: 8"
 Floor Height: 8"

Height (Int): 70"
 Height (Ext): 78"

Weight (Net): 13141 lb
 Volume (Net): 3.36cu.yd