

Job Name: 25-1431 - Georgetown Commons
 Job Location: Georgetown, KY
 Contractor: Winwater Hartford KY Co.

Plant: Beaver Dam

Tech: J. Coppage

4/23/2026 11:30:48 AM

PC: A. Chambers



Structure ID: CBI 116

P2 BX060060-08TS024036

CB FT REDUCER 24"X36" HOLE

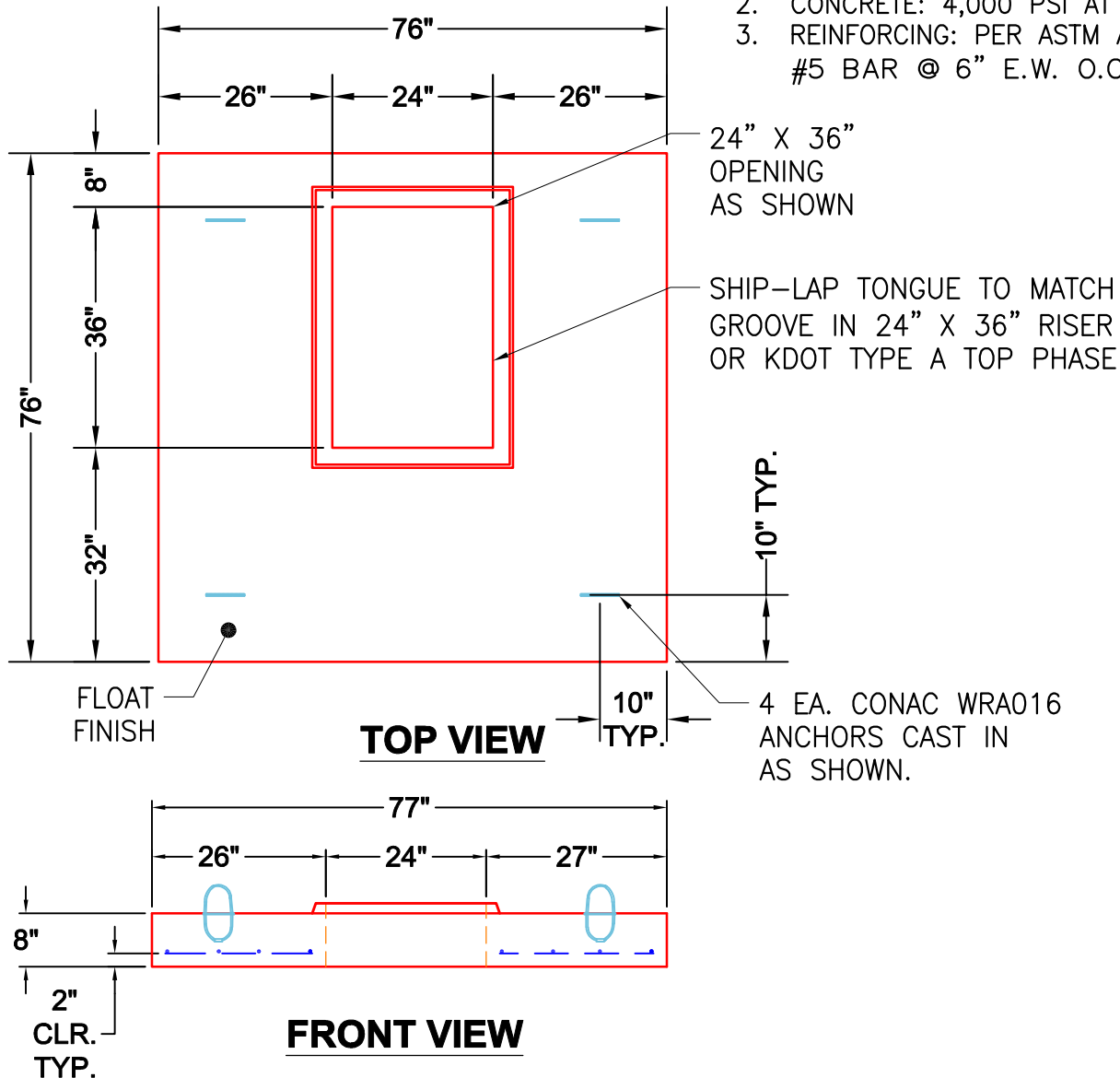
- P5) 24" x 60" - CB INLET KY A 5' TOP RIGHT - 10"
- P4) 24" x 60" - CB INLET KY A 5' BOTTOM RIGHT - 18"
- P3) 24" x 36" - BOX RISER 8inW, Variable Ht - 23"
- P2) 60" x 60" - CB FT REDUCER 24"X36" HOLE - 8"
- P1) 60" x 60" - BOX BASE 8inW, 8inF, Variable Ht - 84"
- 1) 60" x 60" - Conseal CS-102 1.00"
- 2) 24" x 36" - Conseal CS-102 1.00"
- 1) Hole - 50
- 1) Hole - 46
- 1) Hole - 24
- 1) Hole - 6

- 1895 lb
 2670 lb
 2328 lb
 3297 lb
 16460 lb
 0 lb
 0 lb
 0 lb
 0 lb
 0 lb
 0 lb
- Structure Notes:**
1. JR HOE KY-206 PROVIDED BY ICAST.
 2. CASTING FRAME TO BE CAST INTO THE TOP PHASE.
 3. PER KYTC CBI TYPE A / ASTM C913 SPEC'S.
 4. CONCRETE = 4,000 PI AT 28 DAYS.
 5. REINFORCING PER ASTM A615 (GRADE 60).
 - TOP PHASE (As .62) #5 BARS AT 6" C.C.E.W.
 - WALLS (As .31) #5 BARS AT 12" C.C.E.W.
 - FLOOR (As .31) #5 BARS AT 12" C.C.E.W.

Structure Total: 26651 lb

GENERAL NOTES:

1. MANUFACTURED TO ASTM C-913 (LATEST REVISION).
2. CONCRETE: 4,000 PSI AT 28 DAYS.
3. REINFORCING: PER ASTM A615 #5 BAR @ 6" E.W. O.C. (GRADE 60).



Coating (Int): Coating (Ext):	Seam Up: Tongue Seam Dn: Flat	Wall Thickness: 8"	Height (Ext): 8"	Weight (Net): 3297 lb Volume (Net): 0.84cu.yd
----------------------------------	----------------------------------	--------------------	------------------	--