

Job Name: 25-1431 - Georgetown Commons  
 Job Location: Georgetown, KY  
 Contractor: Winwater Hartford KY Co.

Plant: Beaver Dam

Tech: J. Coppage

4/23/2026 11:19:51 AM

PC: A. Chambers



**Structure ID: CB 29**

**P1 MH072BA66**

**MH BASE**

- P3) 36" x 36" - CASTING HEIGHT - 3"
- P2) 72" - MH FLAT TOP w/36"x36" Hole - 10"
- P1) 72" - MH BASE - 66"
- 1) CASTING - HOE 595 F/G
- 1) 72" - Conseal CS-102 1.00"
- 1) 36" x 36" - Conseal CS-102 1.00"
- 1) Hole - 50
- 1) Hole - 46
- 1) Hole - 30
- 5) MH Step ML-10-TDS-NCR - 10"

- Structure Notes:**
1. JR HOE HOE-595 PROVIDED BY ICAST.
  2. PER ASTM C478 SPECIFICATIONS.
  3. CONCRETE = 4,000 PSI AT 28 DAYS.
  4. REINFORCING PER ASTM A615 (GRADE 60).  
 - TOP SLAB (As .62) #5 BARS AT 6" C.C.E.W..  
 - RISER/WALLS (As .18)  
 - FLOOR (As .37) #5 BARS AT 10" C.C.E.W.

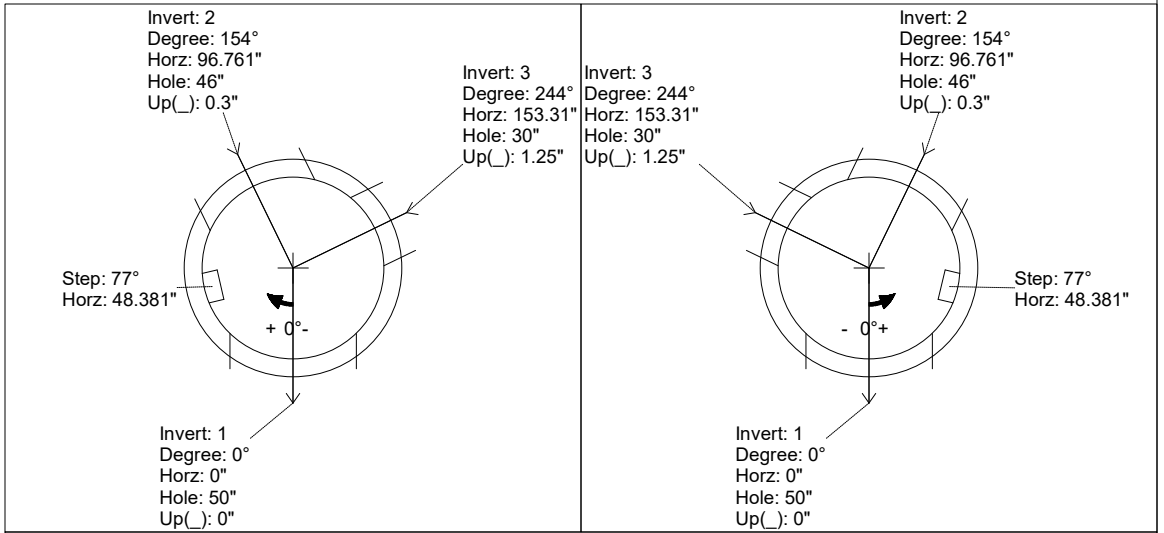
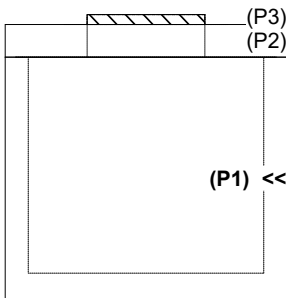
Structure Total: 14960 lb

Rim: 867' Rim to Invert: 6.6' Slack: 3.35" Sump: 3.15" Step Position: 77°

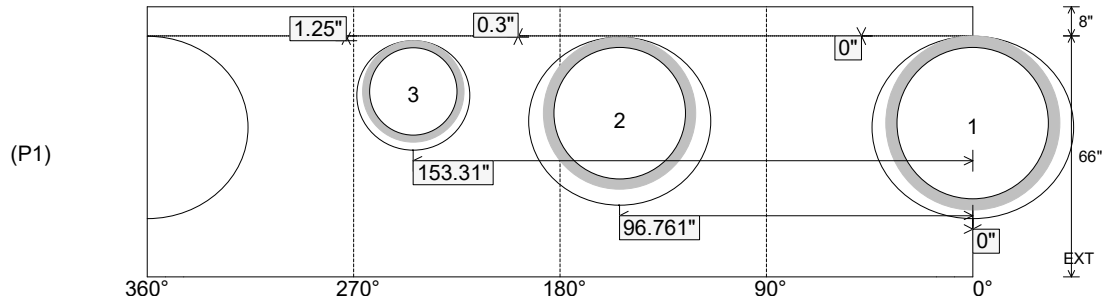
Position	Elev	Angle	Ext. (cw)	Pipe	Pipe OD	Connector	Hole	Horz Size	Up (↓)	Offset
Invert 1	860.4'	0°	0"	42" HDPE	47.7"	Hole 50	50"	55.271"	0"	0"
Invert 2	860.4'	154°	115.576"	36" HDPE	41.7"	Hole 46	46"	49.9"	0.3"	0"
Invert 3	860.4'	244°	183.12"	24" HDPE	27.8"	Hole 30	30"	30.944"	1.25"	0"
Invert 4										
Invert 5										
Invert 6										
Invert 7										
Invert 8										

RIGHT-SIDE UP VIEW (int. dimensions)

UPSIDE-DOWN VIEW (int. dimensions)



INSIDE WALL DIMENSIONS



Coating (Int):  
 Coating (Ext):

Seam Up: Flat  
 Seam Dn: n/a

Wall Thickness: 7"  
 Floor Height: 8"

Height (Int): 66"  
 Height (Ext): 74"

Weight (Net): 10797 lb  
 Volume (Net): 2.76cu.yd