

Job Name: 25-1431 - Georgetown Commons
 Job Location: Georgetown, KY
 Contractor: Winwater Hartford KY Co.

Plant: Beaver Dam

4/23/2026 11:20:19 AM

Tech: J. Coppage

PC: A. Chambers



Structure ID: CB 119

P1 BX3636-08BA60

BOX BASE 8inW, 8inF

- P2) 36" x 36" - CASTING HEIGHT - 3"
- P1) 36" x 36" - BOX BASE 8inW, 8inF - 60"
- 1) CASTING - HOE 595 F/G
- 1) 36" x 36" - Conseal CS-102 1.00"
- 2) Hole - 18

- Structure Notes:
1. JR HOE HOE-595 PROVIDED BY ICAST.
 2. PER ASTM C913 SPECIFICATIONS.
 3. CONCRETE = 4,000 PSI AT 28 DAYS.
 4. REINFORCING PER ASTM A615 (GRADE 60).
- RISER/WALLS (As .31) #5 BARS AT 12" C.C.E.W.
 - FLOOR (As .31) #5 BARS AT 12" C.C.E.W.

0 lb
 8562 lb
 376 lb
 0 lb
 0 lb

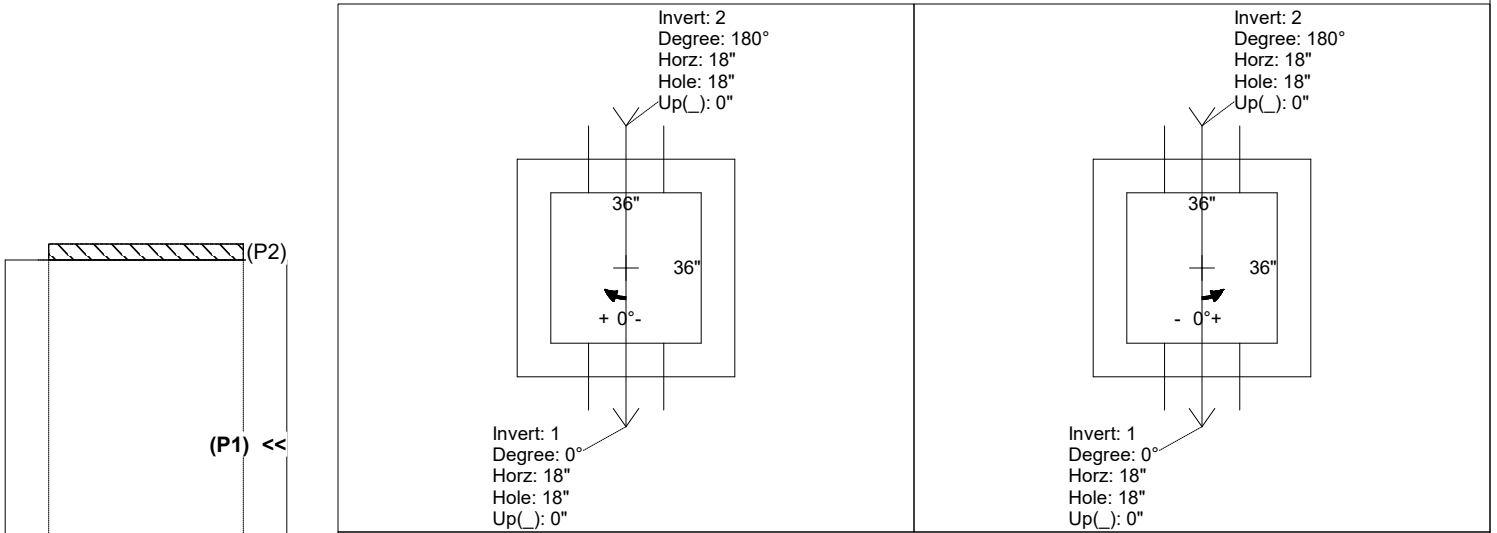
 Structure Total: 8938 lb

Rim: 869.5' Rim to Invert: 5.25' Slack: 1.25" Sump: 1.25" Step Position:

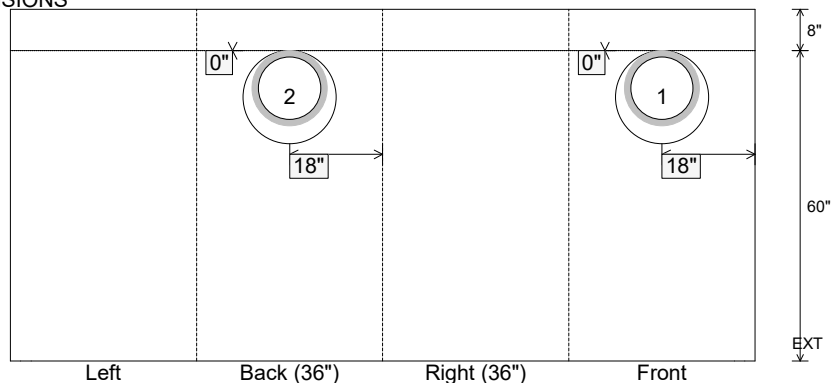
Position	Elev	Angle	Ext. (cw)	Pipe	Pipe OD	Connector	Hole	Horz Size	Up ()	Offset
Invert 1	864.25'	0°	26"	12" HDPE	14.5"	Hole 18	18"	18"	0"	0"
Invert 2	864.25'	180°	26"	12" HDPE	14.5"	Hole 18	18"	18"	0"	0"
Invert 3										
Invert 4										
Invert 5										
Invert 6										
Invert 7										
Invert 8										

RIGHT-SIDE UP VIEW (int. dimensions)

UPSIDE-DOWN VIEW (int. dimensions)



INSIDE WALL DIMENSIONS



Coating (Int):
 Coating (Ext):

Seam Up: Flat
 Seam Dn: n/a

Wall Thickness: 8"
 Floor Height: 8"

Height (Int): 60"
 Height (Ext): 68"

Weight (Net): 8562 lb
 Volume (Net): 2.19cu.yd