

Job Name: 25-1431 - Georgetown Commons
 Job Location: Georgetown, KY
 Contractor: Winwater Hartford KY Co.

Plant: Beaver Dam

4/23/2026 11:30:44 AM

Tech: J. Coppage

PC: A. Chambers



Structure ID: CB 107

P2 MH072LD10-36SQ

MH FLAT TOP w/36"x36" Hole

- P3) 36" x 36" - CASTING HEIGHT - 3"
- P2) 72" - MH FLAT TOP w/36"x36" Hole - 15"
- P1) 72" - MH BASE - 72"
- 1) CASTING - HOE 595 F/G
- 1) 36" x 36" - Conseal CS-102 1.00"
- 2) Hole - 46
- 1) Hole - 20
- 6) MH Step ML-10-TDS-NCR - 10"

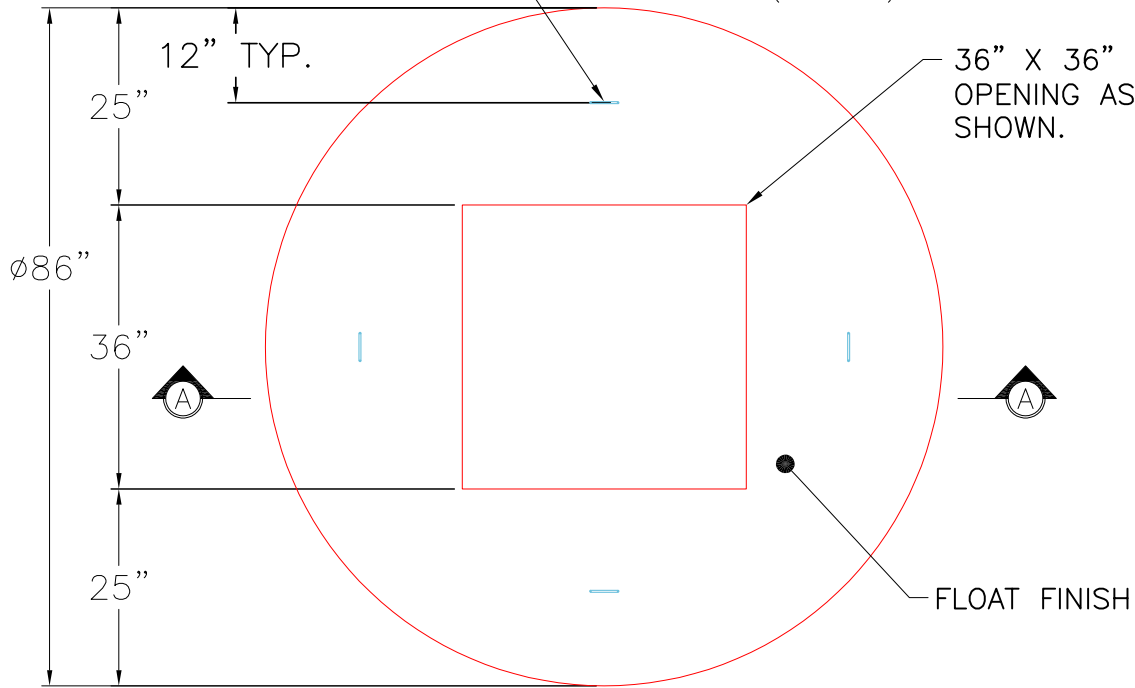
- 0 lb Structure Notes:
1. JR HOE HOE-595 PROVIDED BY ICAST.
 2. PER ASTM C478 SPECIFICATIONS.
 3. CONCRETE = 4,000 PSI AT 28 DAYS.
 4. REINFORCING PER ASTM A615 (GRADE 60).
 - TOP SLAB (As .62) #5 BARS AT 6" C.C.E.W..
 - RISER/WALLS (As .18)
 - FLOOR (As .37) #5 BARS AT 10" C.C.E.W.

Structure Total: 18176 lb

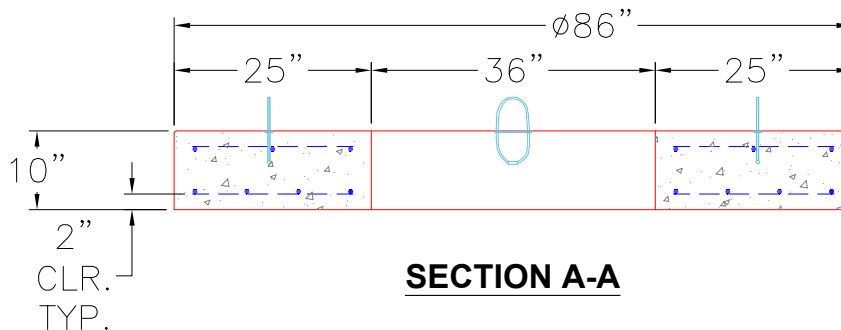
4 EA. CONAC WRA012 WIRE ROPE ANCHORS CAST IN AS SHOWN FOR PLANT AND FIELD HANDLING.

GENERAL NOTES:

1. MANUFACTURED TO ASTM C-478 (LATEST REVISION).
2. CONCRETE 5,000 PSI AT 28 DAYS.
3. REINFORCING: TOP MAT #4 @ 18" O.C. E.W.
 BOTTOM MAT #4 @ 9" O.C. E.W. (GRADE 60)



PLAN VIEW



SECTION A-A

Coating (Int): Coating (Ext):	Seam Up: Flat Seam Dn: Groove	Wall Thickness: 7"	Height (Ext): 15"	Weight (Net): 5680 lb Volume (Net): 1.45cu.yd
----------------------------------	----------------------------------	--------------------	-------------------	--