

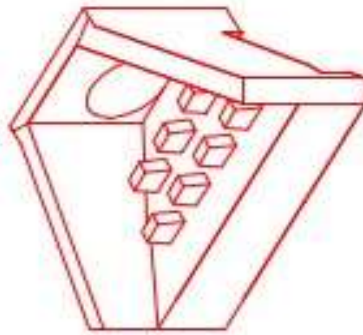


Structure ID: 37(31)

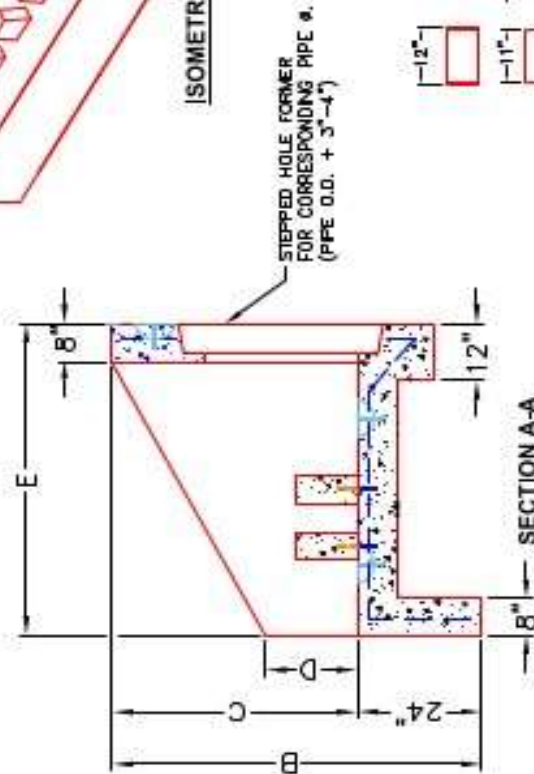
P1 HWPC48D

48" - PIPE CULVERT HEADWALL w/DISS

DIMENSIONS										WEIGHT
PRE #	A	B	C	D	E	F	G	H		
30"	1'-4"	6'-4"	1'-4"	1'-4"	5'-4"	3'-6"	1'-8"	3'-4"		4120 lbs.
36"	4'-4"	6'-4"	1'-4"	1'-4"	5'-4"	4'-0"	1'-8"	3'-4"		4120 lbs.
42"	6'-4"	6'-7"	5'-5"	2'-4"	6'-5"	4'-6"	1'-8"	4'-11"		13,233 lbs.
48"	6'-4"	6'-7"	5'-5"	2'-4"	6'-5"	5'-2"	1'-8"	4'-11"		13,233 lbs.
54"	7'-4"	7'-4"	6'-4"	2'-4"	7'-4"	5'-8"	1'-8"	6'-4"		16,422 lbs.
60"	7'-4"	7'-4"	6'-4"	2'-4"	7'-4"	6'-4"	1'-8"	6'-4"		16,422 lbs.



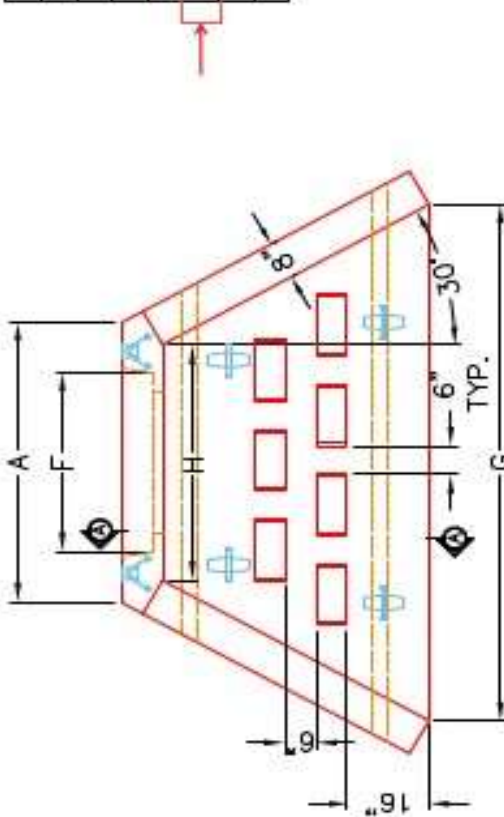
ISOMETRIC VIEW



SECTION A-A

2-#5 BAR STUBS FOR POST MOUNTING TO HEADWALL FLOOR.

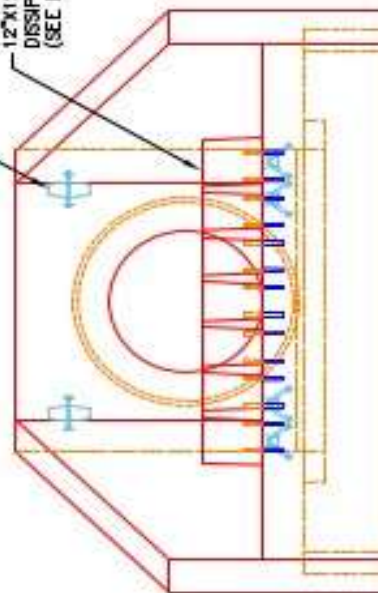
DISSIPATOR BLOCK DETAIL



PLAN VIEW

7-A-ANCHOR LIFTING SYSTEM FOR PLANT & FIELD HANDLING.

12"x12"x6" ENERGY DISSIPATOR BLOCKS (SEE DETAIL).



FRONT ELEVATION

NOTES:

1. CONCRETE: KYTC APPROVED.
2. REINFORCING: #5 BAR @ 12" C/C E.W. - GRADE 60, (WITH 2" CONCRETE COVER MINIMUM)
3. REINFORCING BARS TO BE TACK WELDED OR TIED.
4. PIPE AND LIFTING ANCHOR POCKETS TO BE GROUTED WITH KYTC APPROVED NON-SHRINK GROUT.
5. DRAWING TO BE USED IN CONJUNCTION WITH KYTC STD. DRAWINGS RDH-110-02, RDH-210-03 AND THE STANDARD SPECIFICATIONS FOR ROAD AND BRIDGE CONSTRUCTION.
6. 7" CHAMFER ON ALL EXPOSED EDGES.
7. PREFORMED STEPPED HOLE SIZED AS PER O.D. OF PIPE + 3"-4".
8. QUANTITY & SPACING OF DISSIPATOR BLOCKS MAY VARY PER PIPE SIZE.



INFRASTRUCTURE PRECAST, INC.
 601 WEST 7TH ST., BEAVER DAM, KY, 40350
 PHONE: (476) 383-2288, FAX: (476) 288-7824

KYTC 30"-60" PIPE CULVERT HEADWALL WITH ENERGY DISSIPATORS
 DRAWING NO.: KYTC PC-HW DATE: 08-01-22
 REVIEWED BY: J.H. ROSS, PE DRAWN BY: N. RICHARDS
 WEB: WWW.ICASTING.COM SCALE: NTS