

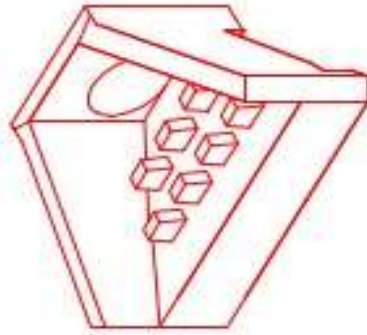


Structure ID: 342(174)

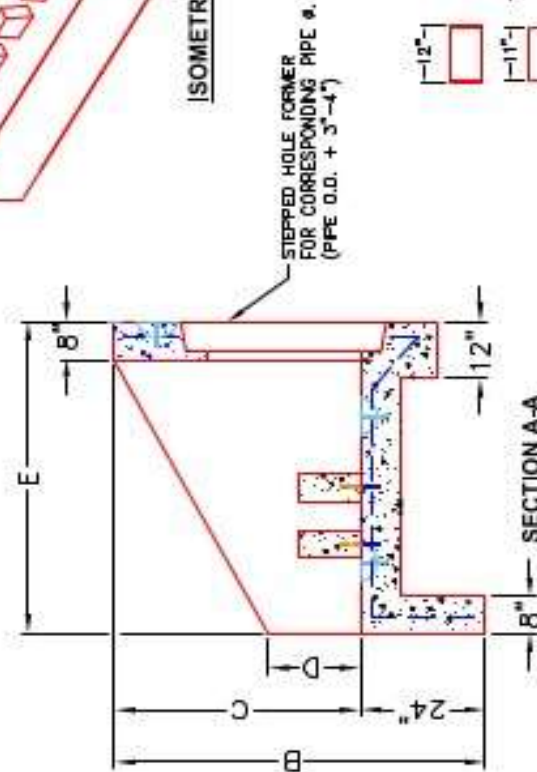
P1 HWPC42D

42" - PIPE CULVERT HEADWALL w/DISS

DIMENSIONS								WEIGHT	
PRE #	A	B	C	D	E	F	G	H	
30"	1'-4"	6'-4"	1'-4"	1'-4"	5'-4"	3'-6"	1'-8"	3'-4"	4,120 lbs.
36"	1'-4"	6'-4"	1'-4"	1'-4"	5'-4"	4'-0"	1'-8"	3'-4"	4,120 lbs.
42"	6'-4"	6'-7"	5'-5"	2'-4"	6'-5"	4'-6"	1'-1"	4'-11"	13,233 lbs.
48"	6'-4"	6'-7"	5'-5"	2'-4"	6'-5"	5'-2"	1'-1"	4'-11"	13,233 lbs.
54"	7'-4"	7'-4"	6'-4"	2'-4"	7'-4"	5'-8"	0'-8"	6'-4"	16,472 lbs.
60"	7'-4"	7'-4"	6'-4"	2'-4"	7'-4"	6'-4"	0'-8"	6'-4"	16,472 lbs.

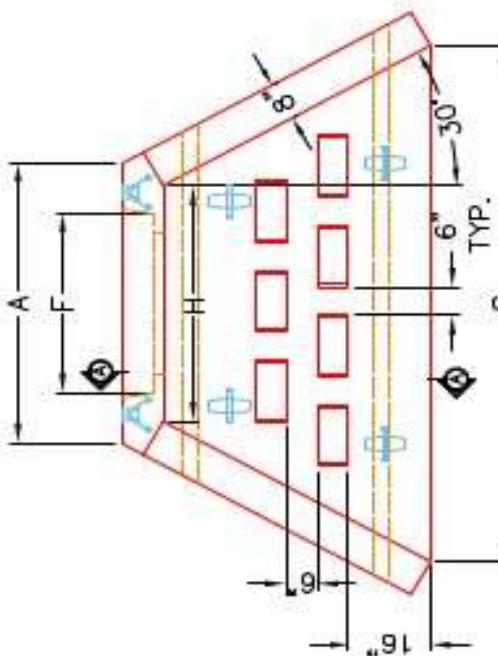


ISOMETRIC VIEW



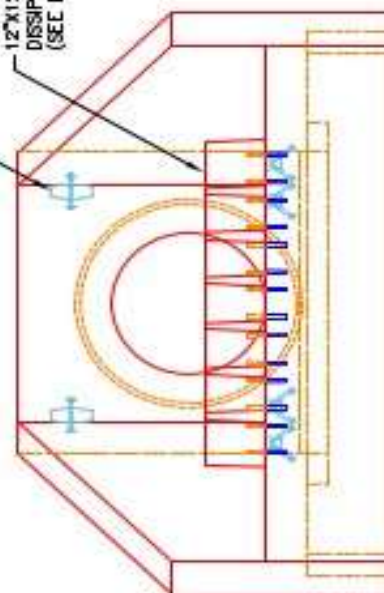
SECTION A-A

2-#5 BAR STUBS FOR POST MOUNTING TO HEADWALL FLOOR. DISSIPATOR BLOCK DETAIL



"A-ANCHOR" LIFTING SYSTEM FOR PLANT & FIELD HANDLING.

12"x12"x6" ENERGY DISSIPATOR BLOCKS (SEE DETAIL).



FRONT ELEVATION



INFRASTRUCTURE PRECAST, INC.
 601 WEST 7TH ST., BEAVER DAM, KY, 42020
 PHONE: (270) 363-5288, FAX: (270) 268-7424

KYTC 30"-60" PIPE CULVERT HEADWALL WITH ENERGY DISSIPATORS

DRAWING NO.: KYTC PC-HW DATE: 08-01-22
 REVIEWED BY: J.H. ROSS, PE DRAWN BY: N. RICHARDS
 WEB: WWW.IPCASTING.COM SCALE: NTS

NOTES:

1. CONCRETE: KYTC APPROVED.
2. REINFORCING: #5 BAR @ 12" C/C E.W.-GRADE 60, (WITH 2" CONCRETE COVER MINIMUM)
3. REINFORCING BARS TO BE TACK WELDED OR TIED.
4. PIPE AND LIFTING ANCHOR POCKETS TO BE GROUTED WITH KYTC APPROVED NON-SHRINK GROUT.
5. DRAWING TO BE USED IN CONJUNCTION WITH KYTC STD. DRAWING RDH-110-02, RDH-210-03 AND THE STANDARD SPECIFICATIONS FOR ROAD AND BRIDGE CONSTRUCTION.
6. 3" CHAMFER ON ALL EXPOSED EDGES.
7. PREFORMED STEPPED HOLE SIZED AS PER O.D. OF PIPE + 3"-4".
8. QUANTITY & SPACING OF DISSIPATOR BLOCKS MAY VARY PER PIPE SIZE.