



Structure ID: 322(128)

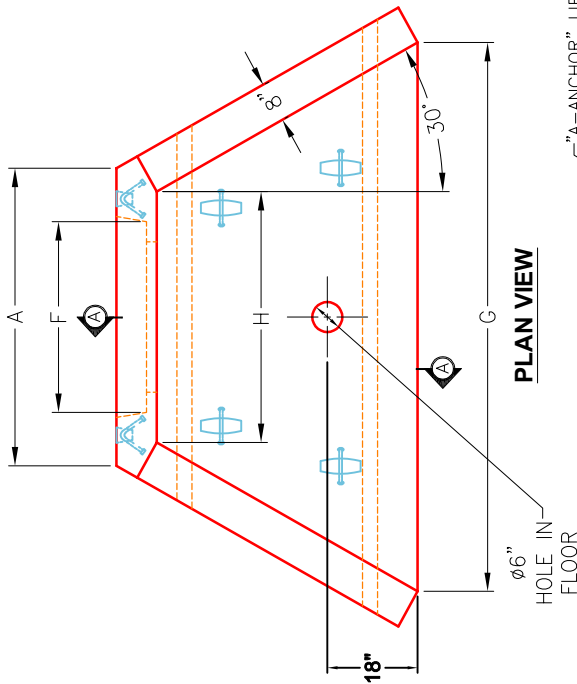
P1 HWPCCUS

36" - PIPE CULVERT HEADWALL CUSTOM

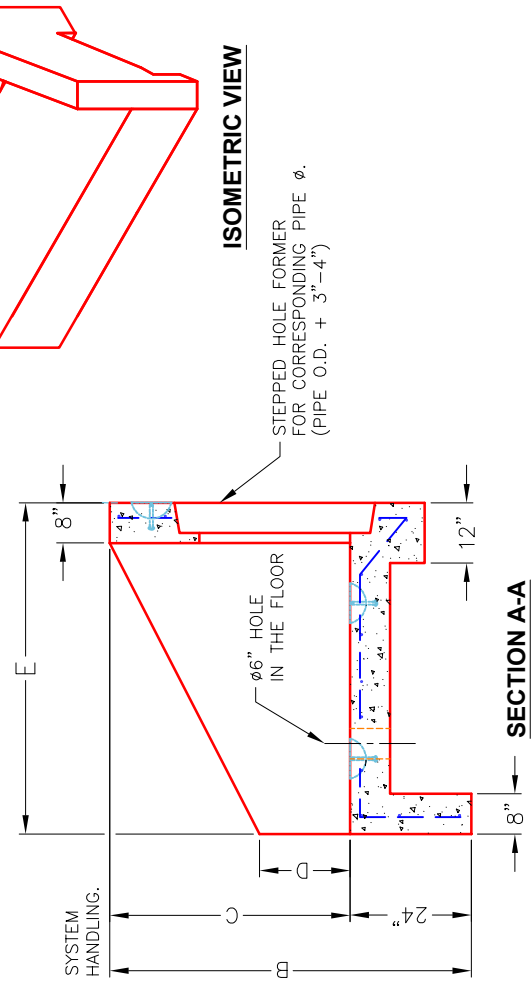
DIMENSIONS								
PIPE ϕ	A	B	C	D	E	F	H	WEIGHT
36"	4'-6"	6'-0"	4'-0"	1'-6"	5'-0"	4'-0"	3'-8"	8,820 lbs.

NOTES:

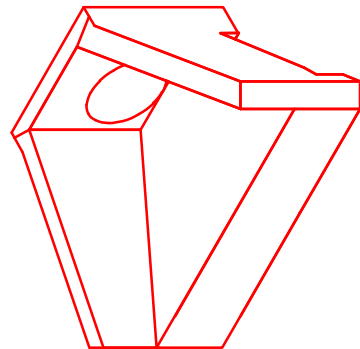
1. CONCRETE: KYTC APPROVED.
2. REINFORCING: #5 BAR @ 12" C/C E.W.-GRADE 60, (WITH 2" CONCRETE COVER MINIMUM)
3. REINFORCING BARS TO BE TACK WELDED OR TIED.
4. PIPE AND LIFTING ANCHOR POCKETS TO BE GROUTED WITH KYTC APPROVED NON-SHRINK GROUT.
5. DRAWING TO BE USED IN CONJUNCTION WITH KYTC STD. DRAWING RDH-110-02, RDH-210-03 AND THE STANDARD SPECIFICATIONS FOR ROAD AND BRIDGE CONSTRUCTION.
6. 3" CHAMFER ON ALL EXPOSED EDGES.
7. PREFORMED STEPPED HOLE SIZED AS PER O.D. OF PIPE + 3"-4".



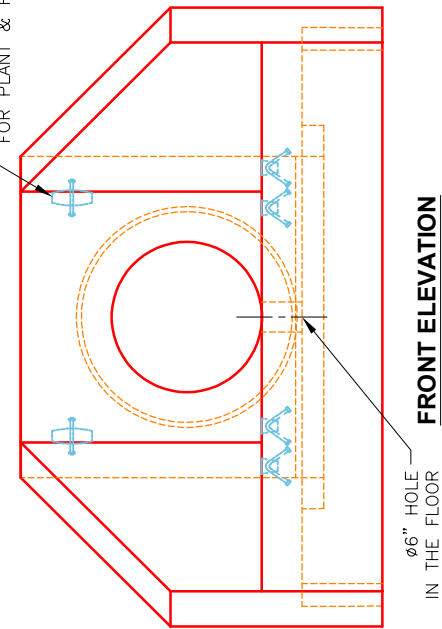
PLAN VIEW



SECTION A-A



ISOMETRIC VIEW



FRONT ELEVATION