



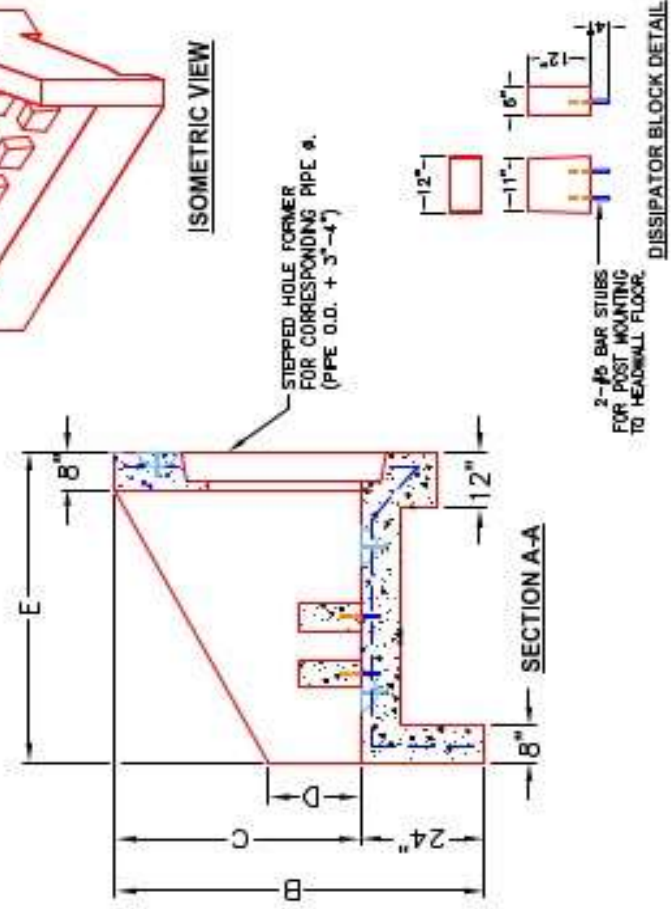
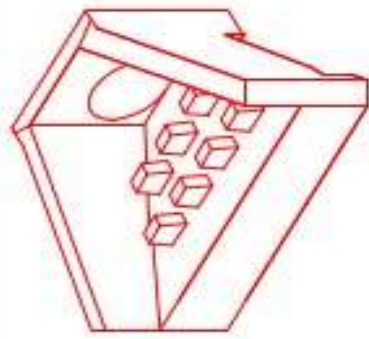
Structure ID: 205(97)

P1 HWPC54D

54" - PIPE CULVERT HEADWALL w/DISS

DIMENSIONS

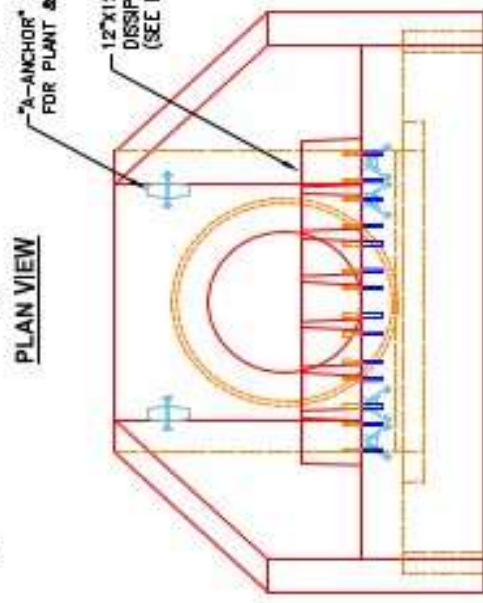
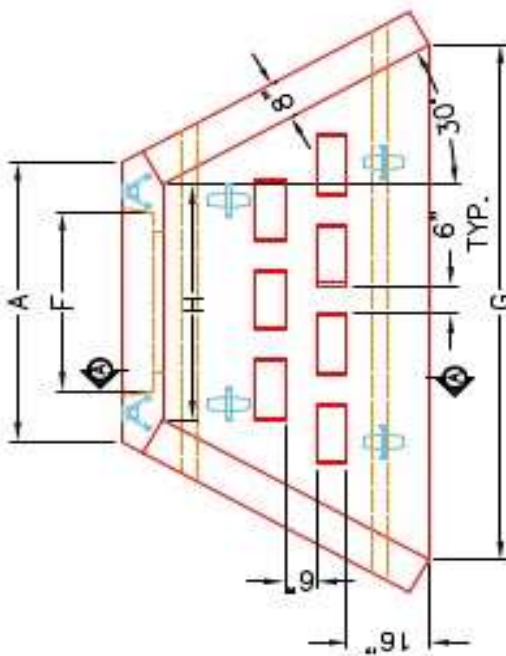
PRE #	A	B	C	D	E	F	G	H	WEIGHT
30"	1'-4"	6'-4"	1'-4"	1'-4"	5'-4"	3'-6"	1'-8"	3'-4"	4420 lbs.
36"	1'-4"	6'-4"	1'-4"	1'-4"	5'-4"	4'-0"	1'-8"	3'-4"	4420 lbs.
42"	1'-4"	6'-7"	5'-5"	2'-4"	6'-5"	4'-6"	1'-8"	4'-11"	5323 lbs.
48"	1'-4"	6'-7"	5'-5"	2'-4"	6'-5"	5'-2"	1'-8"	4'-11"	5323 lbs.
54"	1'-4"	7'-4"	6'-4"	2'-4"	7'-4"	5'-8"	1'-8"	6'-4"	16422 lbs.
60"	1'-4"	7'-4"	6'-4"	2'-4"	7'-4"	6'-4"	1'-8"	6'-4"	16422 lbs.



INFRASTRUCTURE PRECAST, INC.
 901 WEST 7TH ST., BEAVER DAM, KY, 40330
 PHONE: (770) 388-2288, FAX: (770) 268-7624

KYTC 30"-60" PIPE CULVERT HEADWALL WITH ENERGY DISSIPATORS

DRAWING NO.: KYTC PC-HW DATE: 08-01-22
 REVIEWED BY: J.H. ROSS, PE DRAWN BY: N. RICHARDS
 WEB: WWW.ICASTING.COM SCALE: NTS



NOTES:

1. CONCRETE: KYTC APPROVED.
2. REINFORCING: #5 BAR @ 12" C/C E.W. - GRADE 60, (WITH 2" CONCRETE COVER MINIMUM)
3. REINFORCING BARS TO BE TACK WELDED OR TIED.
4. PIPE AND LIFTING ANCHOR POCKETS TO BE GROUTED WITH KYTC APPROVED NON-SHRINK GROUT.
5. DRAWING TO BE USED IN CONJUNCTION WITH KYTC STD. DRAWINGS RDH-110-02, RDH-210-03 AND THE STANDARD SPECIFICATIONS FOR ROAD AND BRIDGE CONSTRUCTION.
6. 2" CHAMFER ON ALL EXPOSED EDGES.
7. PREFORMED STEPPED HOLE SIZED AS PER O.D. OF PIPE + 3"-4".
8. QUANTITY & SPACING OF DISSIPATOR BLOCKS MAY VARY PER PIPE SIZE.