

Job Name: 25-1428 - Jimmy Johns Newburgh  
 Job Location: Newburgh, IN  
 Contractor: Hahn Excavating, Inc.

Plant: 100  
 12/10/2025 8:32:02 AM

Tech: J. Horsley - F  
 PC: J. Jarvis



**Structure ID: 504**

**P2 MH048LD07ECC**

**MH FLAT LID w/24in ECC Hole**

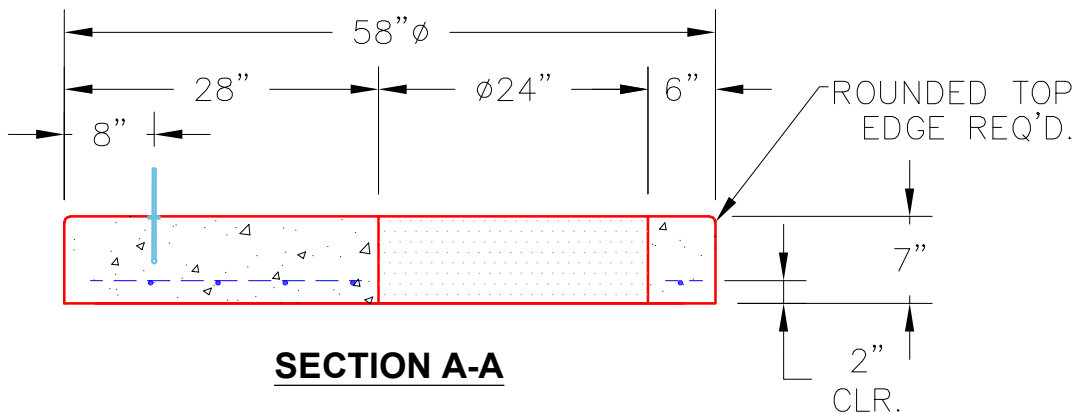
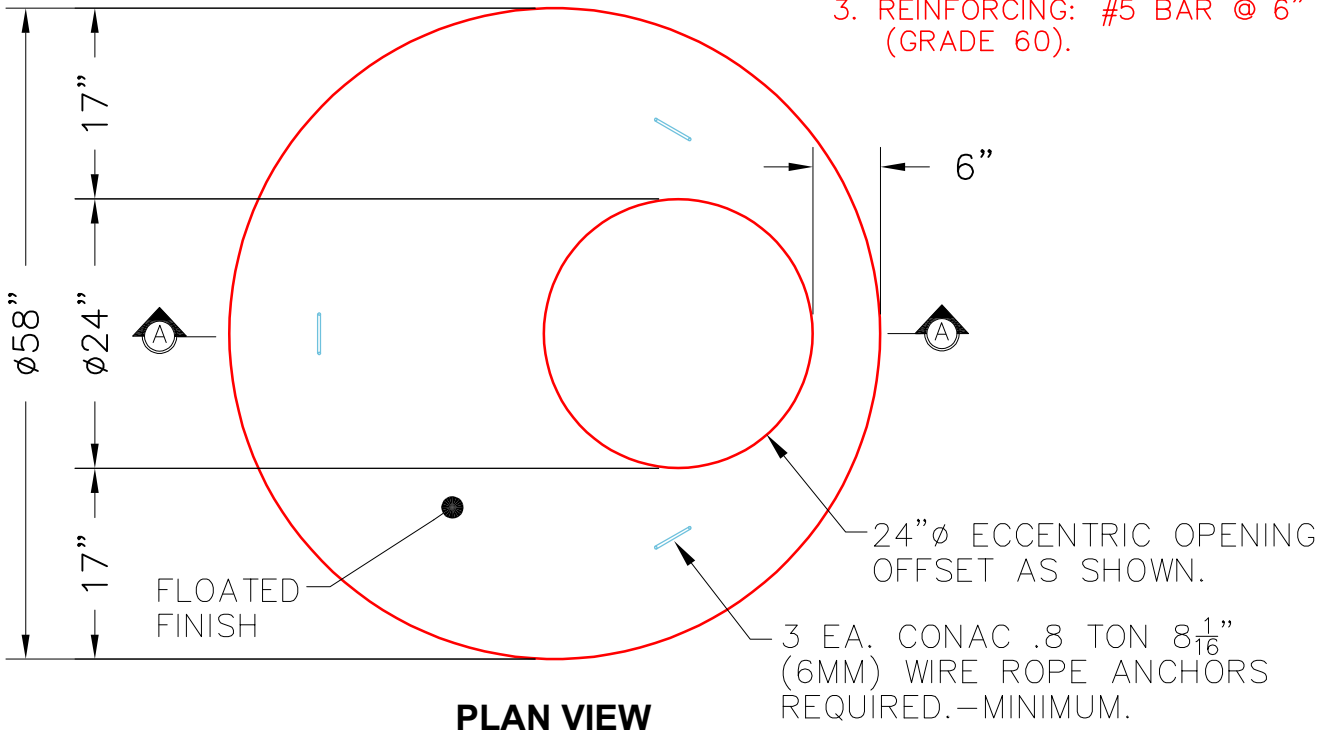
- P3) 24" - CASTING HEIGHT - 7"
- P2) 48" - MH FLAT LID w/24in ECC Hole - 7"
- P1) 48" - MH BASE - 24"
- 1) CASTING - HOE MC-315 F/C Storm
- 1) 48" - Conseal CS-102 1.00"
- 2) DOGHOUSE INVRTD - 22"x24"

- 0 lb Structure Notes:  
 1286 lb 1. PER ASTM C478 SPECIFICATIONS.  
 2599 lb 2. CONCRETE = 4,000 PSI AT 28 DAYS.  
 258 lb 3. NO STEPS AND NO INVERT CHANNEL.  
 0 lb 4. CASTING BY ICAST (HOE MC-315 F/C STORM)  
 0 lb

Structure Total: 4143 lb  
 REINFORCING PER ASTM A615 (GRADE 60).  
 - TOP SLAB (As .62) #5 BARS AT 6" C.C.E.W..  
 - RISER/WALLS (As .12)  
 - FLOOR (As .31) #5 BARS AT 12" C.C.E.W.

**NOTES:**

1. MANUFACTURED TO ASTM C-478 (LATEST REVISION).
2. CONCRETE: 5,000 PSI AT 28 DAYS.
3. REINFORCING: #5 BAR @ 6" O.C. E.W. (GRADE 60).



Coating (Int): Coating (Ext):	Seam Up: Flat Seam Dn: Flat	Wall Thickness: 5"	Height (Ext): 7"	Weight (Net): 1286 lb Volume (Net): 0.33cu.yd
----------------------------------	--------------------------------	--------------------	------------------	--