

Job Name: 25-1417 Advantage Eye Care
 Job Location: Owensboro, KY
 Contractor: Winwater Hartford KY Co.

Plant: Beaver Dam, KY
 1/7/2026 12:30:20 PM

Tech: Evan Niles
 PC: Andy Chambers



Structure ID: SCI-467.78

P1 BX2436-08BVF

BOX BASE 8inW, 8inF, Variable Ht F/n

P2) 24" x 36" - CASTING HEIGHT - 6"
 P1) 24" x 36" - BOX BASE 8inW, 8inF, Variable Ht F/n - 35"
 1) 24" x 36" - Conseal CS-102 1.00"
 2) Hole - 16

0 lb
 4677 lb
 0 lb
 0 lb

 Structure Total: 4677 lb

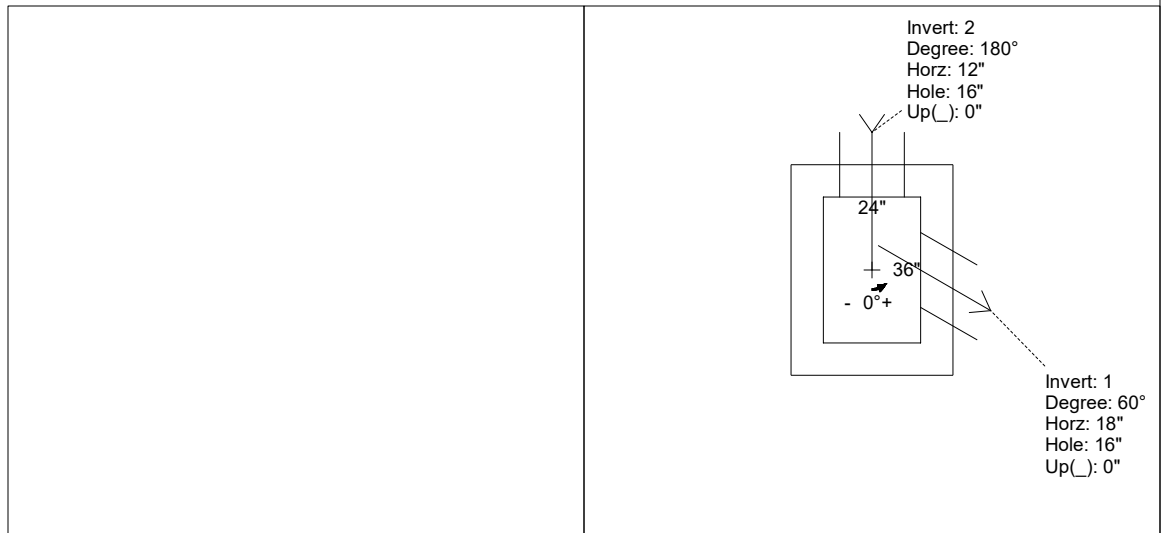
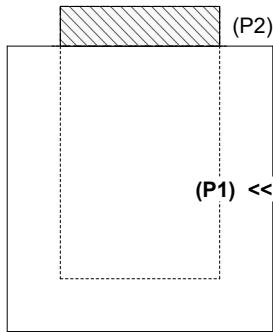
Structure Notes:
 1. PER ASTM C-913 SPECIFICATIONS
 2. CONCRETE: 4,000 PSI AT 28 DAYS
 3. REINFORCEMENT: #5 BAR @ 12" C.C. E.W. (GRADE 60) - 2" MIN. REBAR CLEARANCE (TYP)
 4. NO STORM INVERT
 5. NO STEPS
 6. CASTING: HOE 525 FRAME, GRATE, & CURB HOOD BY ICAST

Rim: 471.25' Rim to Invert: 3.47' Slack: 1.89' Sump: 1.25" Step Position:

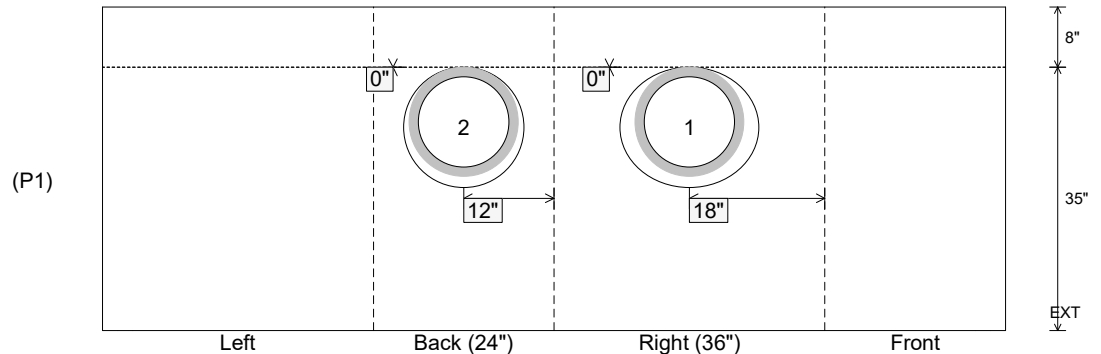
Position	Elev	Angle	Ext. (cw)	Pipe	Pipe OD	Connector	Hole	Horz Size	Up ()	Offset
Invert 1	467.78'	60°	21.381"	12" HDPE	14.5"	Hole 16	16"	18.475"	0"	6"
Invert 2	467.78'	180°	20"	12" HDPE	14.5"	Hole 16	16"	16"	0"	0"
Invert 3										
Invert 4										
Invert 5										
Invert 6										
Invert 7										
Invert 8										

RIGHT-SIDE UP VIEW (int. dimensions)

UPSIDE-DOWN VIEW (int. dimensions)



INSIDE WALL DIMENSIONS



Coating (Int):
 Coating (Ext):

Seam Up: Flat
 Seam Dn: n/a

Wall Thickness: 8"
 Floor Height: 8"

Height (Int): 35"
 Height (Ext): 43"

Weight (Net): 4677 lb
 Volume (Net): 1.2cu.yd