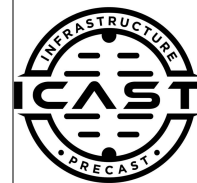


Job Name: 25-1385C W6 Ph.II-A Force Main Improvements  
 Job Location: Burlington, KY  
 Contractor: Lawrence Construction & Leasing, Inc.

Plant: Beaver Dam  
 11/26/2025 1:06:14 PM

Tech: J. Coppage  
 PC: J. Jarvis



**Structure ID: 1030163-A Remake 3**

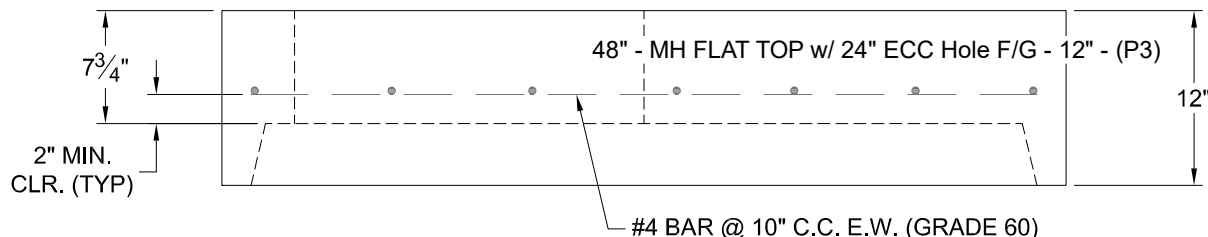
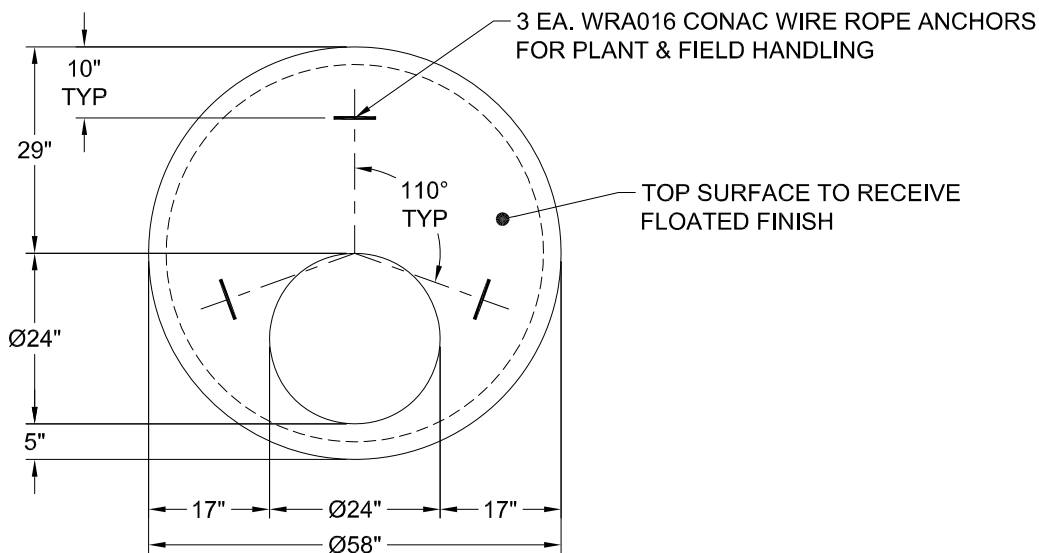
**P3 MH048LD12ECC**

**MH FLAT TOP w/ 24" ECC Hole F/G**

- P4) 24" - CASTING HEIGHT - 7"
- P3) 48" - MH FLAT TOP w/ 24" ECC Hole F/G - 12"
- P2) 48" - MH RISER T/G - 72"
- P1) 48" - MH BASE Custom Ht T/n - 46"
- 1) A-LOK DURA-PLATE 100 LINER - PSSPEC-EA
- 1) 48" - MH INVERT CHANNEL - FULL HEIGHT
- 1) CASTING - HOE MC-375 F/C Sanitary
- 1) 48" - Conseal CS-102 1.00" (Double)
- 2) Kor-N-Seal2 - S206-26
- 8) MH Step ML-10-TDS-NCR - 10"

0 lb  
 1561 lb  
 5030 lb  
 4077 lb  
 0 lb  
 1440 lb  
 271 lb  
 0 lb  
 12 lb  
 0 lb  
 -----  
 Structure Total: 12391 lb

- Structure Notes:
1. PER ASTM C-478 SPECS
  2. CONCRETE: 4,000 PSI AT 28 DAYS
  3. REINFORCEMENT: #4 BAR @ 10" C.C. E.W. (GRADE 60) - 2" MIN. REBAR CLEARANCE (TYP)
  4. INVERT CHANNEL REQUIRED
  5. A-LOK DURA-PLATE 100 LINER REQUIRED
  6. STEPS AT 90 DEGREES
  7. HOE MC-375 SANITARY BY ICAST
  8. LIFTERS: 3 EA. WRA016 CONAC WIRE ROPE ANCHORS FOR PLANT & FIELD HANDLING



Coating (Int):  
 Coating (Ext):

Seam Up: Flat  
 Seam Dn: Groove

Wall Thickness: 5"

Height (Ext): 12"

Weight (Net): 1561 lb  
 Volume (Net): 0.42cu.yd