

Job Name: 25-1348B Lakeview Pointe Sewer System Expansion  
 Job Location: Kuttawa, KY  
 Contractor: Randy Sheffer

Plant: Beaver Dam

Tech: J. Coppage

3/11/2026 9:22:39 AM

PC: A. Chambers



**Structure ID: ARV-1-2**

**P1 MH048DHVF**

**MH DH RISER Custom Ht**

- P3) 24" - CASTING HEIGHT - 7"
- P2) 48" - MH FLAT TOP w/ 24" ECC Hole - 12"
- P1) 48" - MH DH RISER Custom Ht - 40"
- 1) JOINT WRAP - 0.065"x6"x50' CONSEAL CS212
- 1) JOINT WRAP PRIMER - CONSEAL CS-75 (1 gal.)
- 1) CASTING - HOE MC-375 F/C Sanitary
- 1) 48" - Conseal CS-102 1.00" (Double)
- 2) DOGHOUSE - 8"x12"
- 3) MH Step ML-10-TDS-NCR - 10"

- Structure Notes:**
1. JR HOE MC-375 SANITARY BY ICAST
  2. PER ASTM C478 SPECIFICATIONS.
  3. CONCRETE = 4,000 PSI AT 28 DAYS.
  4. REINFORCING PER ASTM A615 (GRADE 60).
    - TOP SLAB (As .62) #5 BARS AT 6" C.C.E.W..
    - RISER/WALLS (As .12)
    - FLOOR (As .31) #5 BARS AT 12" C.C.E.W.

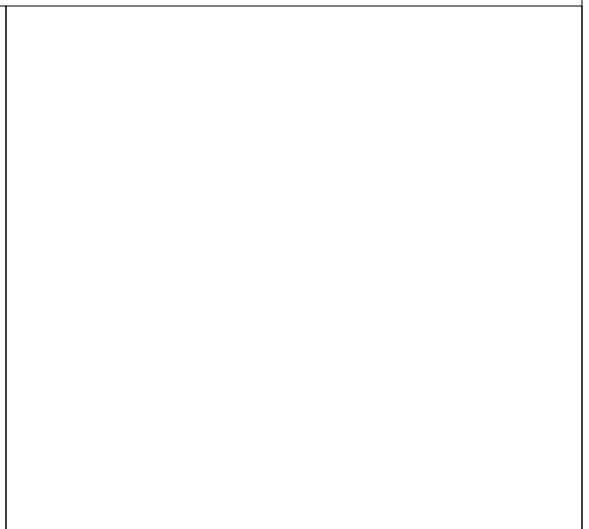
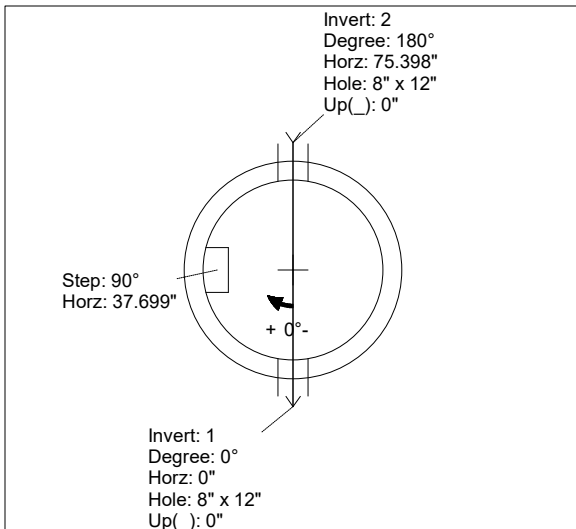
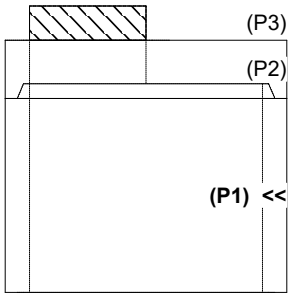
Structure Total: 4554 lb

Rim: 4.63' Rim to Invert: 4.63' Slack: 0.56" Sump: 4" Step Position: 90°

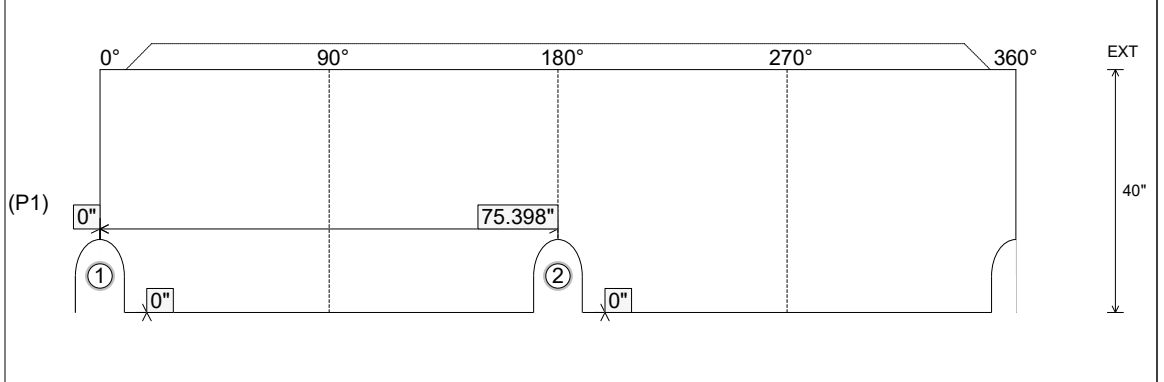
Position	Elev	Angle	Ext. (cw)	Pipe	Pipe OD	Connector	Hole	Horz Size	Up ( )	Offset
Invert 1	0'	0°	0"	4" DI	4.75"	DOGHOUSE 8"x12"	8" x 12"	8.038"	0"	0"
Invert 2	0'	180°	91.106"	4" DI	4.75"	DOGHOUSE 8"x12"	8" x 12"	8.038"	0"	0"
Invert 3										
Invert 4										
Invert 5										
Invert 6										
Invert 7										
Invert 8										

RIGHT-SIDE UP VIEW (int. dimensions)

UPSIDE-DOWN VIEW (int. dimensions)



INSIDE WALL DIMENSIONS



Coating (Int): Coating (Ext):	Seam Up: Tongue Seam Dn: Flat	Wall Thickness: 5" Floor Height: 0"	Height (Int): 40" Height (Ext): 40"	Weight (Net): 2722 lb Volume (Net): 0.7cu.yd
----------------------------------	----------------------------------	--	--	---