

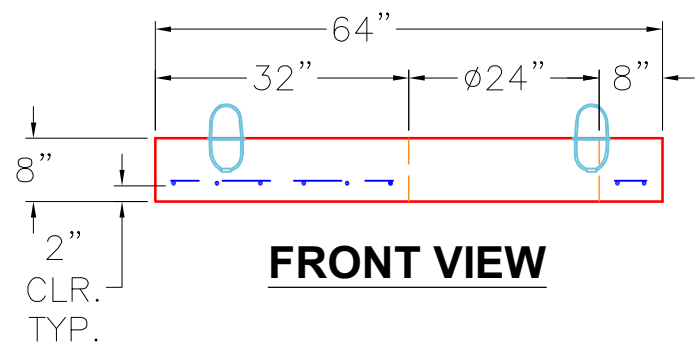
GENERAL NOTES:

1. MANUFACTURED TO ASTM C-913 (LATEST REVISION).
2. CONCRETE: 4,000 PSI AT 28 DAYS.
3. REINFORCING: #5 BAR @ 6" E.W. O.C. (GRADE 60).
4. WEIGHT: 2,446 LBS

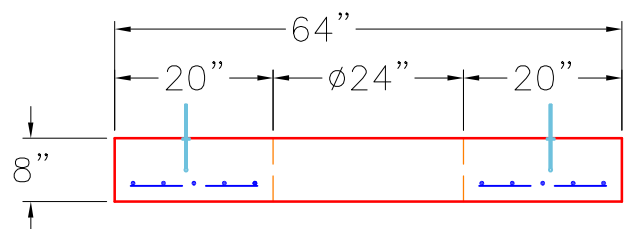
4 EA. CONAC WRA016 WIRE ROPE ANCHORS CAST IN AS SHOWN.

FLOAT FINISH


PLAN VIEW



FRONT VIEW



RIGHT VIEW

PRODUCTION WORK ORDER		PRODUCT I.D.: BXLD4848FL-08LD08S	DESCRIPTION: 64" X 64" X 8" THICK SLAB W/ 24" OPENING	
	QUALITY CONTROL CHECKLIST <input type="checkbox"/> ALL DIMENSIONS CORRECT. <input type="checkbox"/> LIFTERS INSTALLED. <input type="checkbox"/> OPENING CENTERED. <input type="checkbox"/> REINFORCING CORRECT. <input type="checkbox"/> SURFACE QUALITY ACCEPTABLE. <input type="checkbox"/> EDGES CHAMFERED. <input type="checkbox"/> ALL PATCHWORK ACCEPTABLE.		CUSTOMER: HALL CONTRACTING OF KENTUCKY INC	
	PRODUCT VIEW: RIGHT SIDE UP		PROJECT: UPS BUILDING 1860	
	PLANT: BEAVER DAM, KY.		STRUCTURE: STMH 4	
	WEIGHT: 2,446 LBS.		ORDER NO: 25-1308	
	TOP SECTION JOINT: N/A		PC: J. JARVIS DRAWING: J. COPPAGE	
BASE SECTION JOINT: N/A		DATE: 11/10/25 SCALE: NTS PG. 1 of 1		
QC CHECK INITIALS:				