

Structure ID: OCS-C2

P1 BX4848-08W10FEBAV BX BASE w/FLANGE 08W/10F/12EF

P2) 48" x 48" - BX MONO 8"W/6"T SPECIAL - 37" P1) 48" x 48" - BX BASE w/FLANGE 08W/10F/12EF - 42" 1) CASTING - HOE MCS-288 Cover Storm 1) CASTING - HOE MCS-288 Frame 1) 48" x 48" - SGL 1"x14.5' Butyl (2x) 1) Hole - 26 1) Hole - 10 4) Weir - 48"x6" 8) MH Step ML-10-TDS-NCR - 10"	7046 lb 12405 lb 125 lb 123 lb 0 lb 0 lb 0 lb 0 lb 0 lb 0 lb ----- 19698 lb	
Structure Total:		

Structure Notes:

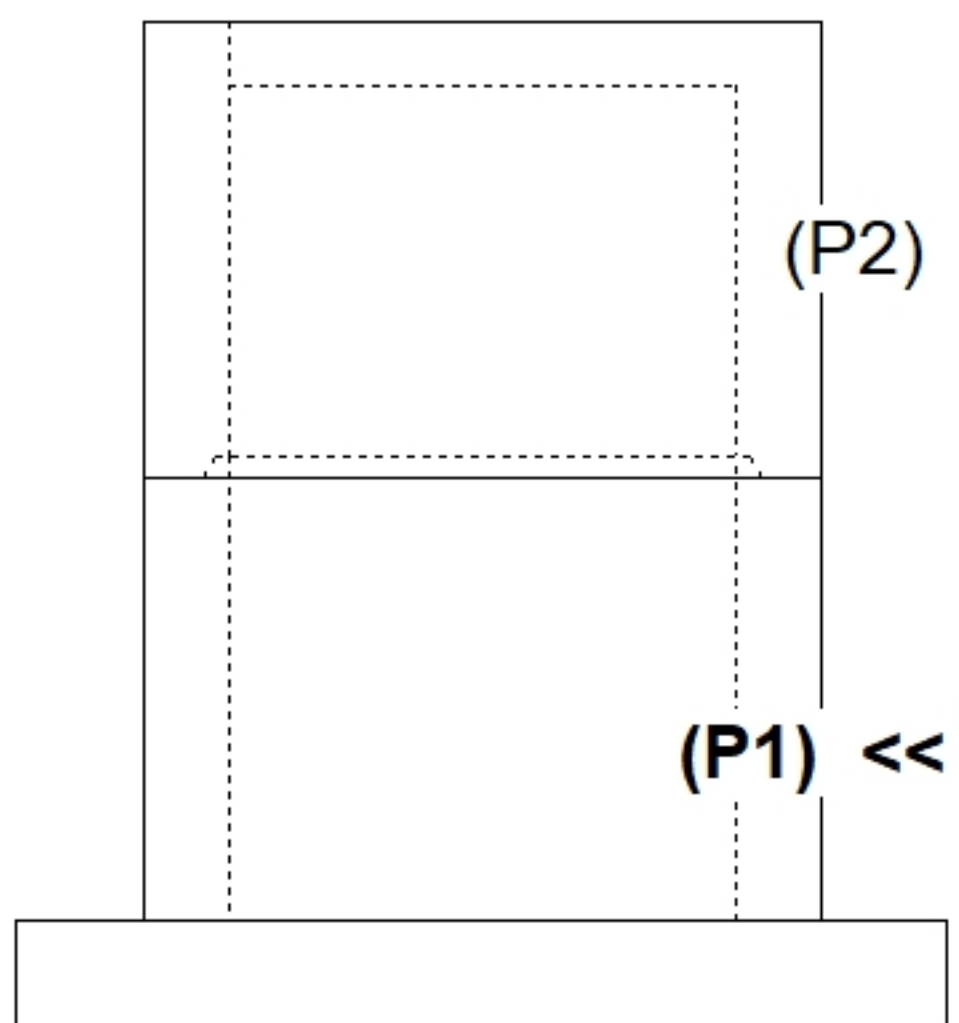
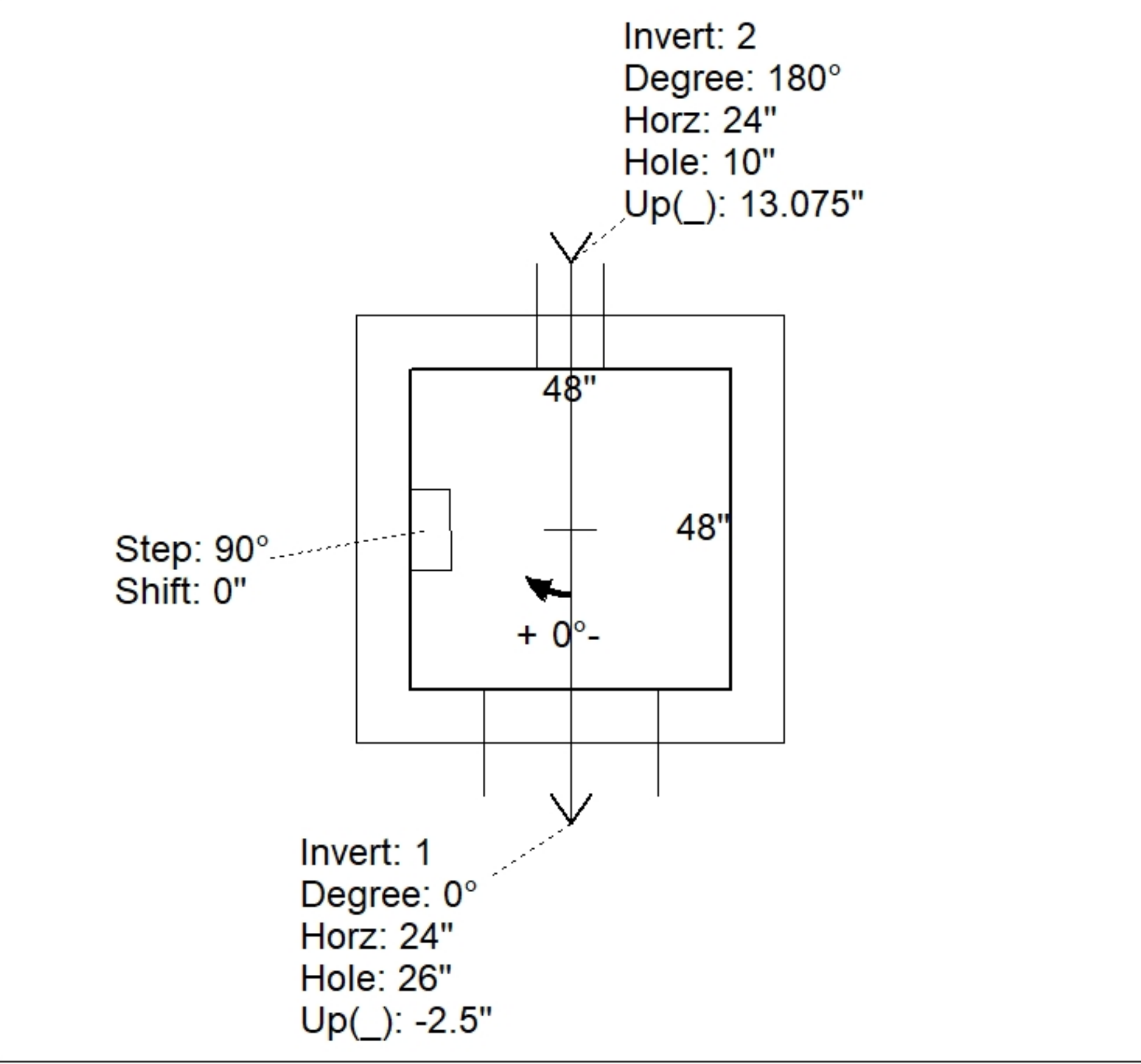
1. JR HOE MCS-288 STORM PROVIDED BY ICAST.
2. PER ASTM C913 SPECIFICATIONS.
3. CONCRETE = 4,000 PSI AT 28 DAYS.
4. REINFORCING PER ASTM A615 (GRADE 60).
 - TOP SLAB (As .62) #4 BARS AT 4" C.C.E.W..
 - WALLS (As .31) #5 BARS AT 12" C.C.E.W..
 - FLOOR (As .31) #5 BARS AT 12" C.C.E.W..
5. (30" DIA. HALF-ROUND PERF. CMP W/ LID TO BE SUPPLIED BY OTHERS)

Rim: 399' Rim to Invert: 7.1' Slack: 0.2" Sump: 0" Step Position: 90°

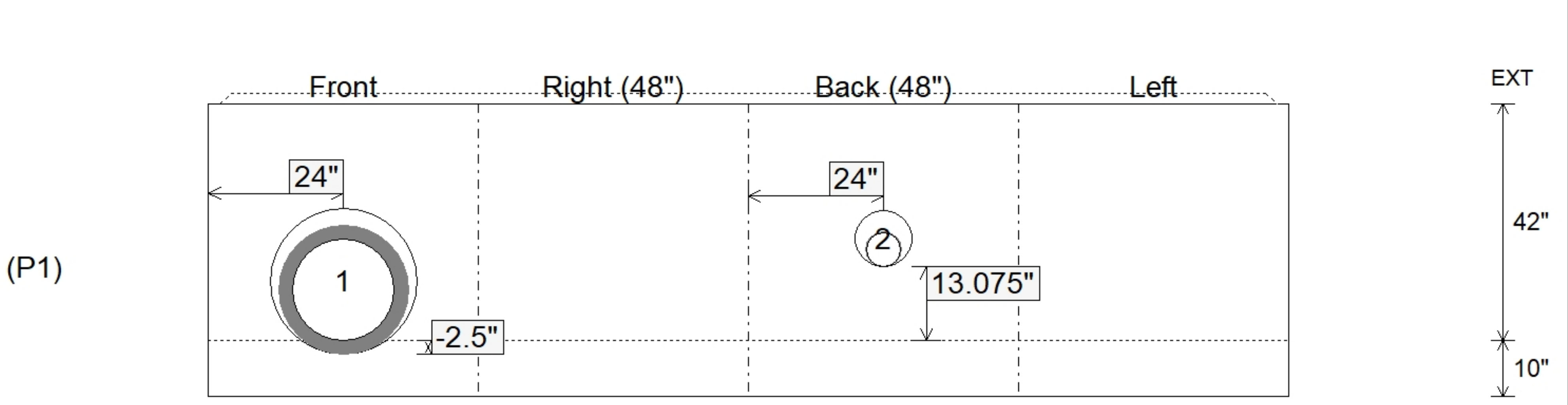
Position	Elev	Angle	Ext. (cw)	Pipe	Pipe OD	Connector	Hole	Horz Size	Up ()	Offset
Invert 1	391.9'	0°	32"	18" RCP B WALL	23"	Hole 26	26"	26"	-2.5"	0"
Invert 2	393'	180°	32"	6" PVC SDR35	6.25"	Hole 10	10"	10"	13.075"	0"
Invert 3										
Invert 4										
Invert 5										
Invert 6										
Invert 7										
Invert 8										

RIGHT-SIDE UP VIEW (int. dimensions)

UPSIDE-DOWN VIEW (int. dimensions)



INSIDE WALL DIMENSIONS



Coating (Int): Coating (Ext):	Seam Up: Tongue Seam Dn: n/a	Wall Thickness: 8" Floor Height: 10"	Height (Int): 42" Height (Ext): 52"	Weight (Net): 12405 lb Volume (Net): 3.17cu.yd
----------------------------------	---------------------------------	---	--	---