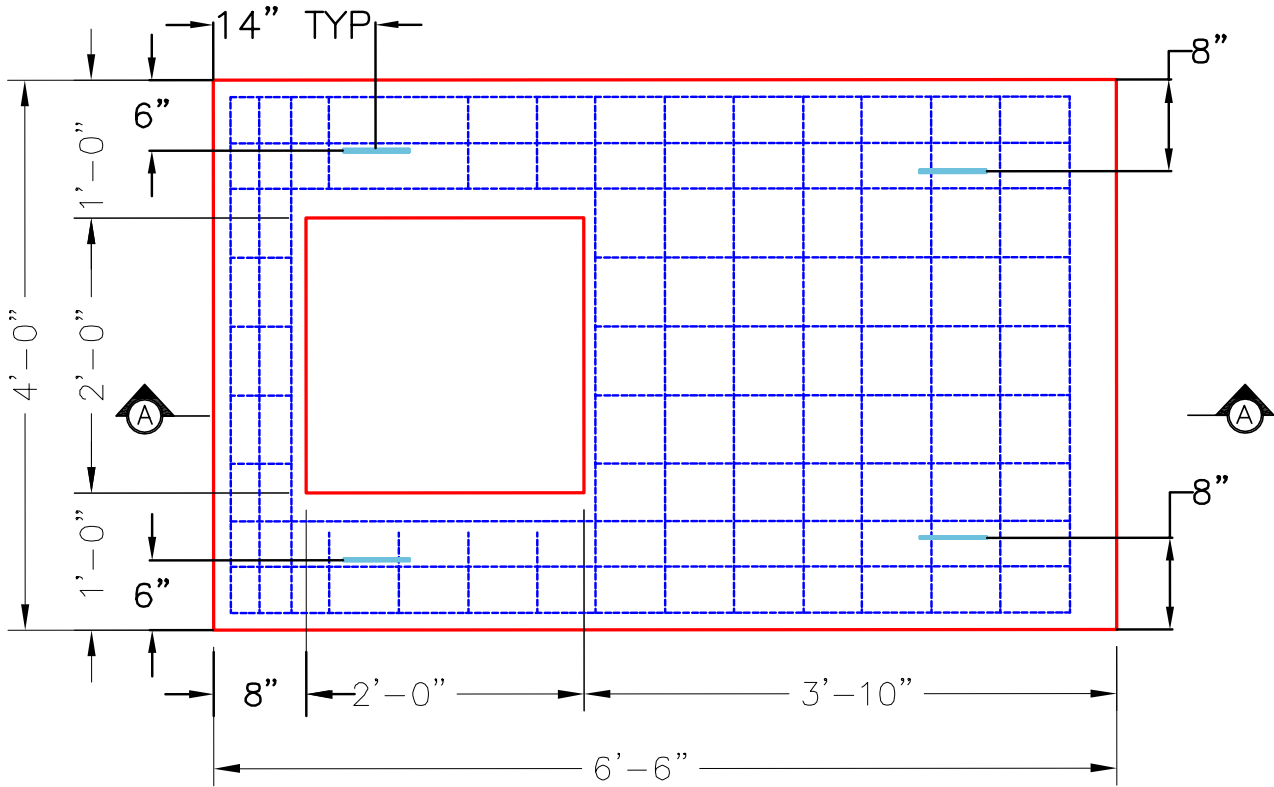
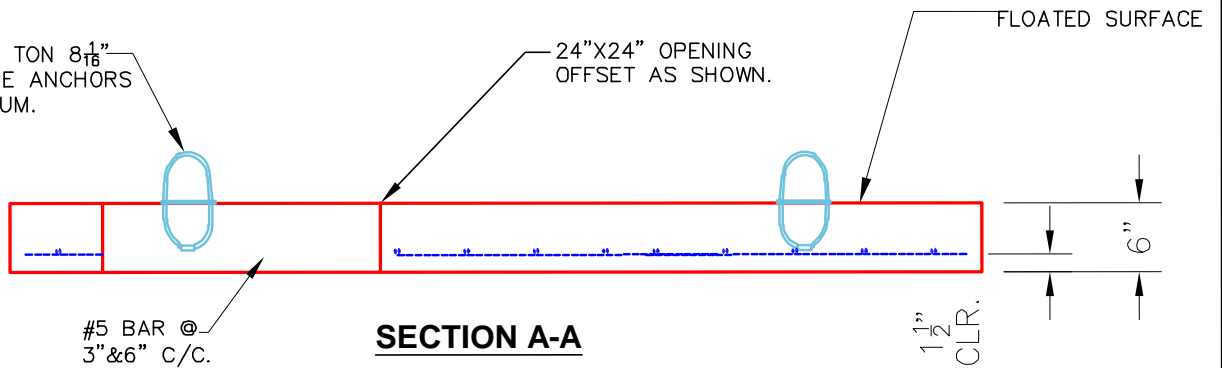


PRINT IN COLOR FOR ADDITIONAL CLARITY



PLAN VIEW


4 EA. CONAC .8 TON 8¹/₁₆" (6MM) WIRE ROPE ANCHORS REQUIRED—MINIMUM.



SECTION A-A

NOTES:

- CONCRETE: 5000 PSI @ 28 DAYS.
- MANUFACTURED TO ASTM C-913 SPECIFICATIONS.
- REINFORCING: #5 BAR AT 3" & 6" C/C—GRADE 60.
- 4 EA. CONAC WIRE LOOP LIFTS REQUIRED (MIN.)

PRODUCTION WORK ORDER		PRODUCT I.D.: BX3672_06LD6	DESCRIPTION: TOP SLAB 36"x66"x6" W/24"x24" OPEN
	QUALITY CONTROL CHECKLIST	PRODUCT VIEW: RIGHT SIDE UP	CUSTOMER: COOPER CONTRACTING
	<input type="checkbox"/> ALL DIMENSIONS CORRECT. <input type="checkbox"/> LIFTERS INSTALLED. <input type="checkbox"/> OPENING CENTERED. <input type="checkbox"/> REINFORCING CORRECT. <input type="checkbox"/> SURFACE QUALITY ACCEPTABLE. <input type="checkbox"/> TOP EDGES ROUNDED. <input type="checkbox"/> ALL PATCHWORK ACCEPTABLE.	PLANT: BEAVER DAM, KY.	PROJECT: GEIGER ST. & 10TH RECONSTRUCTION
		WEIGHT: 1,595 LBS	STRUCTURE: CBI 104
		TOP SECTION JOINT: N/A	QUOTE/ORDER NO: 25-1192
		BASE SECTION JOINT: N/A	PC: J.H. ROSS, PE
QC CHECK INITIALS:		DATE: 09/24/251	SCALE: NTS