

Job Name: 25-1192 Geiger St. & 10th St. Reconstruction	Plant: Beaver Dam	Tech: C.Russ	
Job Location: Huntingberg, IN Contractor: Cooper Contracting	9/24/2025 7:30:27 AM	PC: E.Bradley	

**Structure ID: AD 100**

**P1 BX24240606VF**

**BOX BASE 6inW, 6inF, Variable Ht F/n**

P2) 24" x 24" - CASTING HEIGHT - 4"	0 lb
P1) 24" x 24" - BOX BASE 6inW, 6inF, Variable Ht F/n - 15"	1397 lb
1) 24" x 24" - SGL 1"x14.5' Butyl	0 lb
1) DOGHOUSE INVRTD - 16"x14"	0 lb
1) DOGHOUSE INVRTD - 8"x6"	0 lb
1) DOGHOUSE INVRTD - 10"x8"	0 lb
<b>Structure Total:</b>	<b>1397 lb</b>

**Structure Notes:**

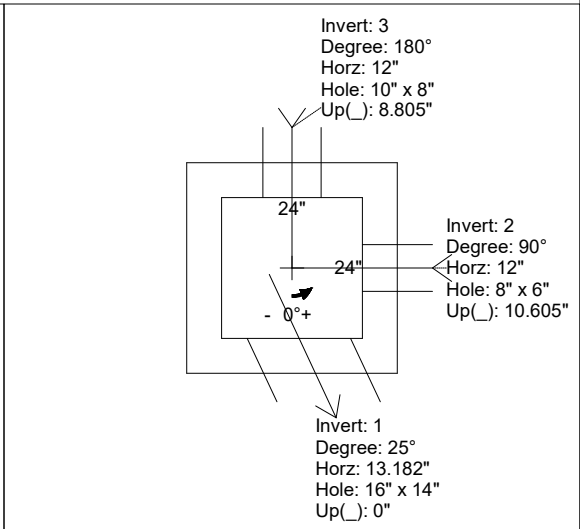
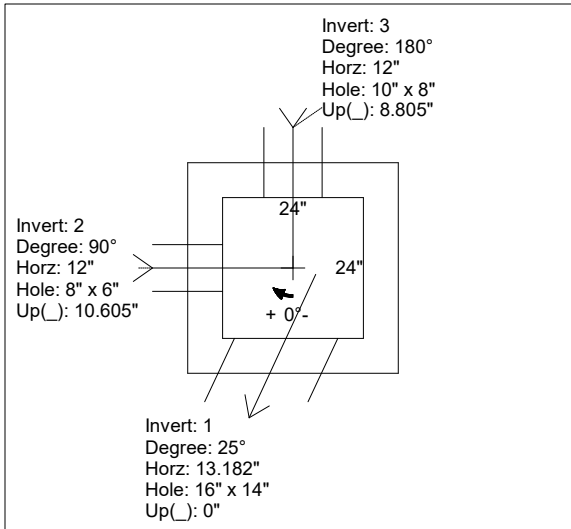
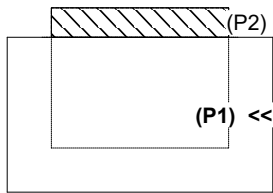
- PER ASTM C913 SPECIFICATIONS.
- CONCRETE = 4,000 PSI AT 28 DAYS.
- NO INVERT CHANNEL.
- HOE 280T BY ICAST
- REINFORCING PER ASTM A615 (GRADE 60).  
- WALLS (As .12) #5 BARS AT 12" C.C.E.W.  
- FLOOR (As .12) #5 BARS AT 12" C.C.E.W.

Rim: 503.66'    Rim to Invert: 1.53'    Slack: 0.61"    Sump: 1.25"    Step Position:

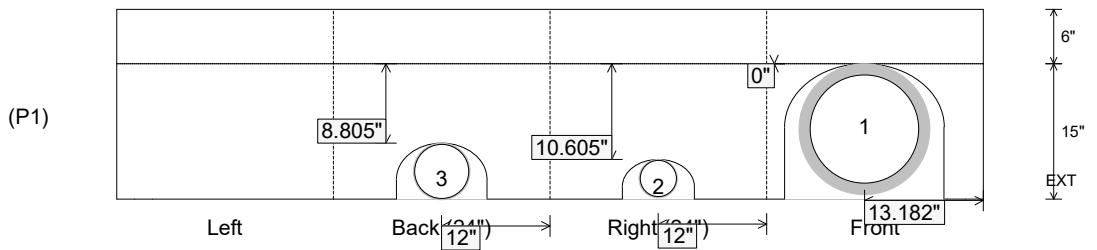
Position	Elev	Angle	Ext. (cw)	Pipe	Pipe OD	Connector	Hole	Horz Size	Up ( )	Offset
Invert 1	502.13'	25°	21.98"	12" HDPE	14.5"	DOGHOUSE INVRTD 16"x14"	16" x 14"	17.654"	0"	-4"
Invert 2	502.92'	90°	18"	4" PVC SDR35	4.25"	DOGHOUSE INVRTD 8"x6"	8" x 6"	8"	10.605"	0"
Invert 3	502.77'	180°	18"	6" PVC SDR35	6.25"	DOGHOUSE INVRTD 10"x8"	10" x 8"	10"	8.805"	0"
Invert 4										
Invert 5										
Invert 6										
Invert 7										
Invert 8										

**RIGHT-SIDE UP VIEW (int. dimensions)**

**UPSIDE-DOWN VIEW (int. dimensions)**



**INSIDE WALL DIMENSIONS**



Coating (Int): Coating (Ext):	Seam Up: Flat Seam Dn: n/a	Wall Thickness: 6" Floor Height: 6"	Height (Int): 15" Height (Ext): 21"	Weight (Net): 1397 lb Volume (Net): 0.36cu.yd
----------------------------------	-------------------------------	--	--	--