

Job Name: 25-1172 - Midland Farms
Job Location: Somerset, KY 45203
Contractor: Weddle Enterprises, Inc

PC: C. Goff
 TECH: J. Horsley - F
 Plant: 100



Structure ID: **SSMH 1**
 Spec: Sanitary
 Type: SAN.MH
 Size: 48"

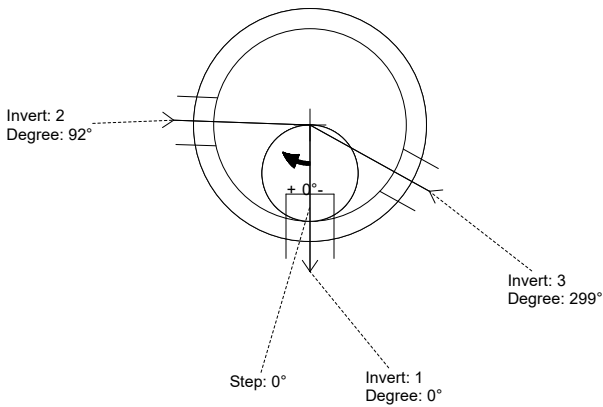
Rim: 952.8'
 Invert: 945.8'
 Rim to Invert: 7'

Sump: 2"
 Floor (Top): 945.633'
 Floor Height: 6"

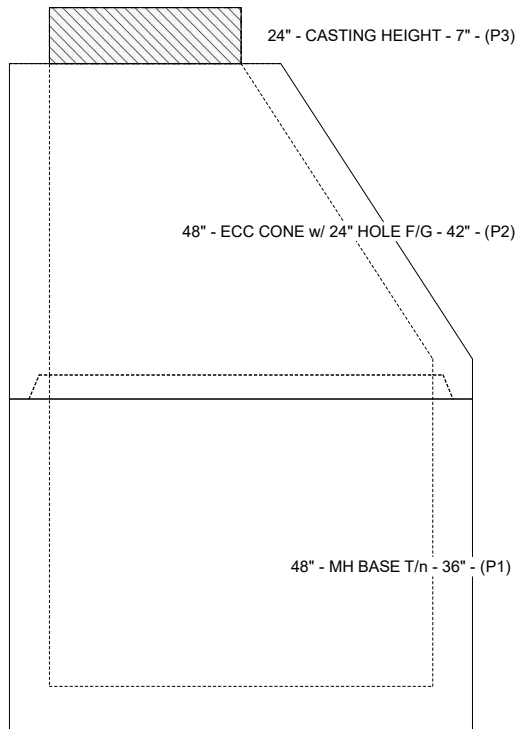
Floor (Bot): 945.133'
 Overall Height: 7.583'
 Slack: 1"

- Structure Notes:**
1. PER ASTM C-478 SPECIFICATIONS
 2. CONCRETE: 4,000 PSI AT 28 DAYS
 3. REINFORCEMENT: PER ASTM A615
 4. STEPS AT 0 DEGREES
 5. INVERT CHANNEL REQUIRED
 6. CASTING SUPPLIED BY OTHERS (7" FRAME & SOLID COVER)

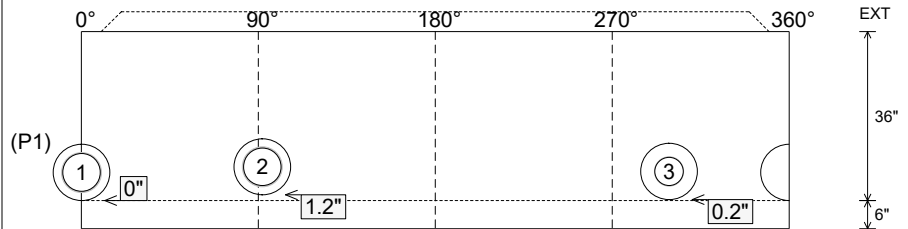
- STRUCTURE SUMMARY:**
- P3) 24" - CASTING HEIGHT - 7" 0 lb
 - P2) 48" - ECC CONE w/ 24" HOLE F/G - 42" 3200 lb
 - P1) 48" - MH BASE T/n - 36" 3701 lb
 - 1) 48" - MH INVERT CHANNEL - FULL HEIGHT 1440 lb
 - 1) JOINT WRAP - 0.065"x6"x50' CONSEAL CS212 0 lb
 - 1) JOINT WRAP PRIMER - CONSEAL CS-75 (1 gal.) 0 lb
 - 1) 48" - Conseal CS-102 1.00" (Double) 0 lb
 - 2) PSX - 12-08 NYLO 16 lb
 - 1) PSX - 12-06 NYLO 8 lb
 - 2) MH Step ML-10-TDS-NCR - 10" 0 lb
- Structure Total: 8365 lb



Position	Elev	Angle	Pipe	Pipe OD	Hole	Connector	Up (L)	Ref
Rim	952.8'							
Reducer								
Invert 1	945.8'	0°	8" PVC SDR35	8.5"	12"	PSX 12-08 NYLO	0"	P1
Invert 2	945.9'	92°	8" PVC SDR35	8.5"	12"	PSX 12-08 NYLO	1.2"	P1
Invert 3	945.9'	299°	6" PVC SDR35	6.25"	12"	PSX 12-06 NYLO	0.2"	P1
Invert 4								
Invert 5								
Invert 6								
Invert 7								
Invert 8								



Cast (Int. Dim.) - Interior Dimensions



Submittal Drawing
 12/15/2025 12:23:14 PM

SUBMITTAL
 APPROVED BY: