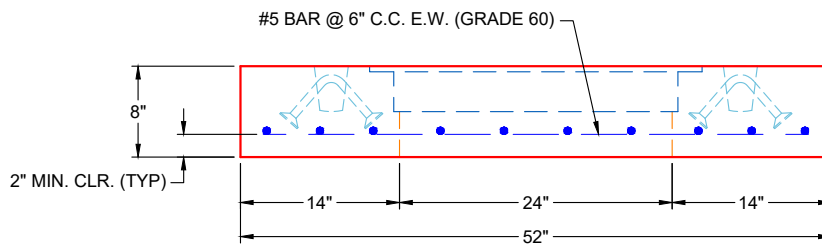
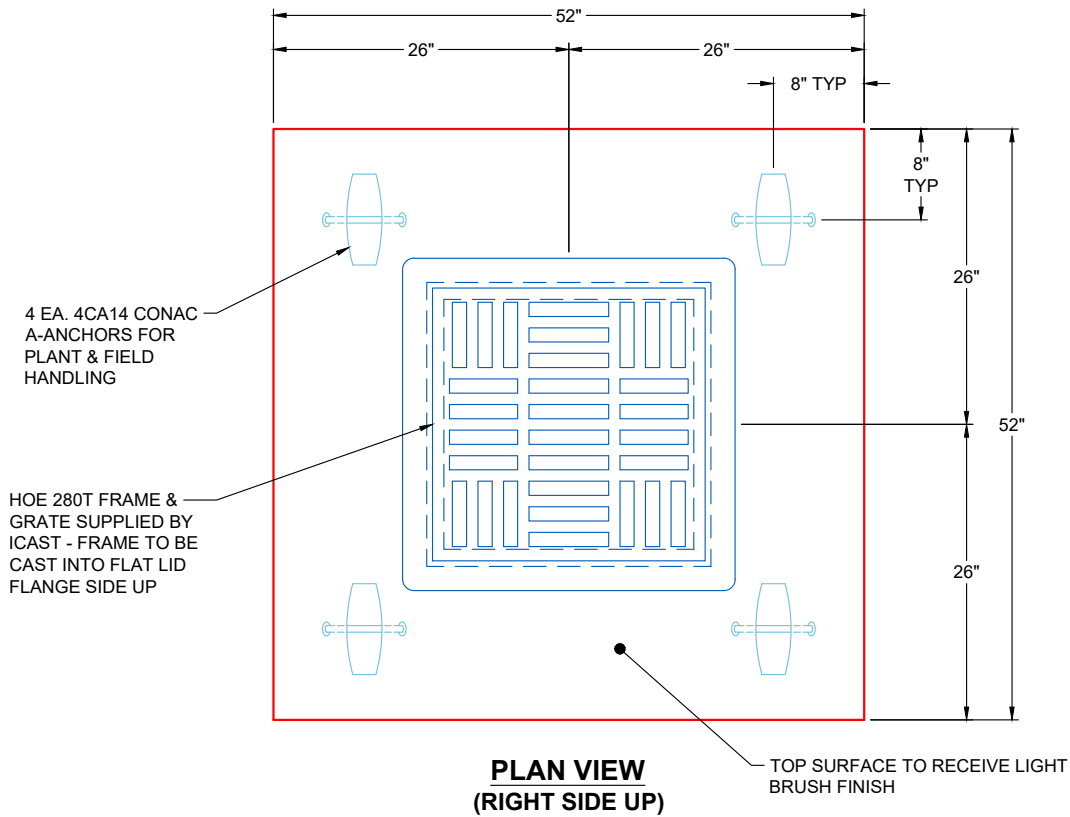



**GENERAL NOTES:**

1. MANUFACTURE TO ASTM C-913 (LATEST REVISION)
2. CONCRETE: 5,000 PSI AT 28 DAYS
3. REINFORCING: #5 BAR @ 6" C.C. E.W. (GRADE 60) - 2" MIN. REBAR CLEARANCE (TYP)
4. WEIGHT: 1,625 LBS
5. HOE 280T FRAME & GRATE SUPPLIED BY ICAST
6. CASTING FRAME TO BE CAST INTO FLAT LID FLANGE SIDE UP
7. LIFTERS: 4 EA. 4CA14 CONAC A-ANCHORS FOR PLANT & FIELD HANDLING
8. TOP SURFACE TO RECEIVE LIGHT BRUSH FINISH



<b>PRODUCTION WORK ORDER</b>		PRODUCT I.D.: BX036036-08LD08S	DESCRIPTION: 52" X 52" X 8" FLAT LID SPECIAL
	QUALITY CONTROL CHECKLIST	PRODUCT VIEW: RIGHT SIDE UP	CUSTOMER: WEDDLE ENTERPRISES, INC.
	<input type="checkbox"/> ALL DIMENSIONS CORRECT.	PLANT: BEAVER DAM, KY	PROJECT: MIDLAND FARMS
	<input type="checkbox"/> LIFTERS INSTALLED.	WEIGHT: 1,625 LBS	STRUCTURE: OS1
	<input type="checkbox"/> HOLE LOCATION(S) CORRECT.	TOP SECTION JOINT: FLAT	QUOTE / SALES ORDER NO: 25-1172
	<input type="checkbox"/> REINFORCING CORRECT.	BASE SECTION JOINT: N / A	PE: J.H. ROSS
	<input type="checkbox"/> CASTING LOCATION & ORIENTATION.	QC CHECK INITIALS:	DRAWN BY: K. CARDWELL
<input type="checkbox"/> OUTSIDE TOP EDGE TROWELLED.		DATE: 12/15/25	SCALE: NTS
<input type="checkbox"/> SHIPLAP JOINT INSTALLED.			PG. 1 OF 1