

**Job Name: 25-1172 - Midland Farms**  
**Job Location: Somerset, KY 45203**  
**Contractor: Weddle Enterprises, Inc**

PC: C. Goff  
 TECH: J. Horsley - F  
 Plant: 100



Structure ID: **CB 2**  
 Spec: Storm  
 Type: STM.MH (Recessed pipe)  
 Size: 48"

Rim: 946.5'  
 Invert: 942.5'  
 Rim to Invert: 4'

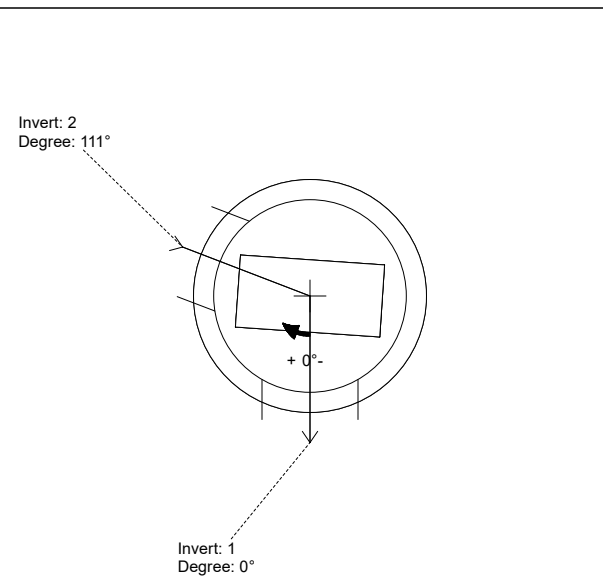
Sump: 0"  
 Floor (Top): 942.5'  
 Floor Height: 6"

Floor (Bot): 942'  
 Overall Height: 4.458'  
 Slack: 0.5"

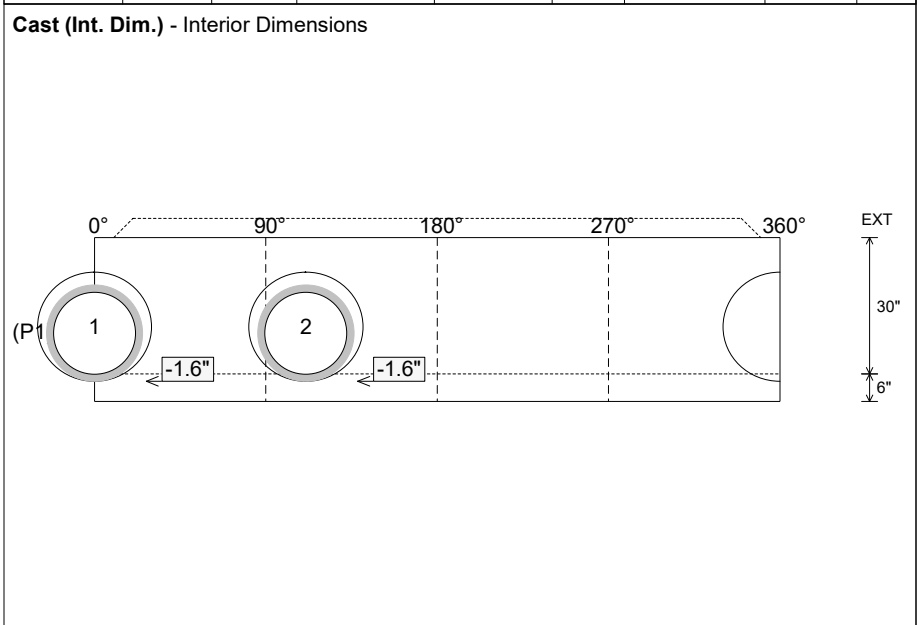
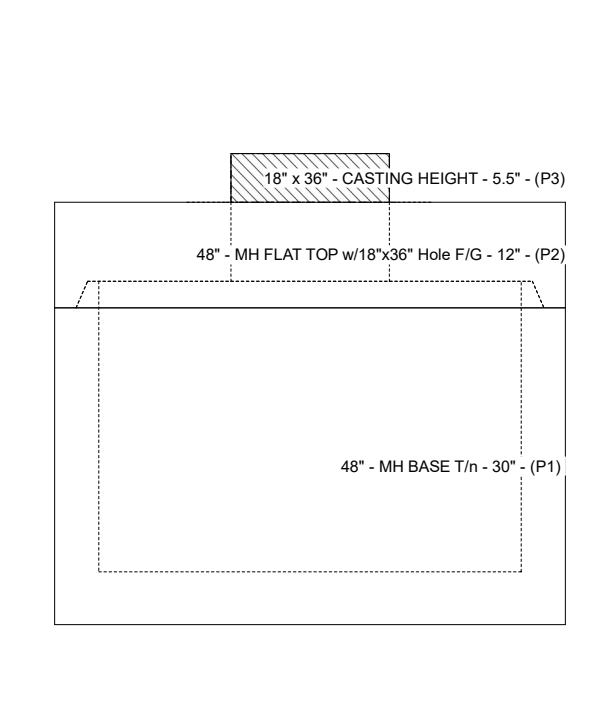
- Structure Notes:
1. PER ASTM C-478 SPECIFICATIONS
  2. CONCRETE: 4,000 PSI AT 28 DAYS
  3. REINFORCEMENT: PER ASTM A615
  4. NO STEPS & NO INVERT CHANNEL
  5. CASTING SUPPLIED BY OTHERS (HOE 580-A FRAME & GRATE)

STRUCTURE SUMMARY:

P3) 18" x 36" - CASTING HEIGHT - 5.5" 0 lb  
 P2) 48" - MH FLAT TOP w/18"x36" Hole F/G - 12" 2008 lb  
 P1) 48" - MH BASE T/n - 30" 3032 lb  
 1) 48" - Conseal CS-102 1.00" 0 lb  
 1) 18" x 36" - Conseal CS-102 1.00" 0 lb  
 2) Hole - 24 0 lb  
 -----  
 Structure Total: 5039 lb



| Position | Elev   | Angle | Pipe     | Pipe OD | Hole | Connector | Up (L) | Ref |
|----------|--------|-------|----------|---------|------|-----------|--------|-----|
| Rim      | 946.5' |       |          |         |      |           |        |     |
| Reducer  |        |       |          |         |      |           |        |     |
| Invert 1 | 942.5' | 0°    | 18" HDPE | 21.2"   | 24"  | Hole 24   | -1.6"  | P1  |
| Invert 2 | 942.5' | 111°  | 18" HDPE | 21.2"   | 24"  | Hole 24   | -1.6"  | P1  |
| Invert 3 |        |       |          |         |      |           |        |     |
| Invert 4 |        |       |          |         |      |           |        |     |
| Invert 5 |        |       |          |         |      |           |        |     |
| Invert 6 |        |       |          |         |      |           |        |     |
| Invert 7 |        |       |          |         |      |           |        |     |
| Invert 8 |        |       |          |         |      |           |        |     |



Submittal Drawing  
 12/15/2025 12:23:11 PM

SUBMITTAL  
 APPROVED BY: