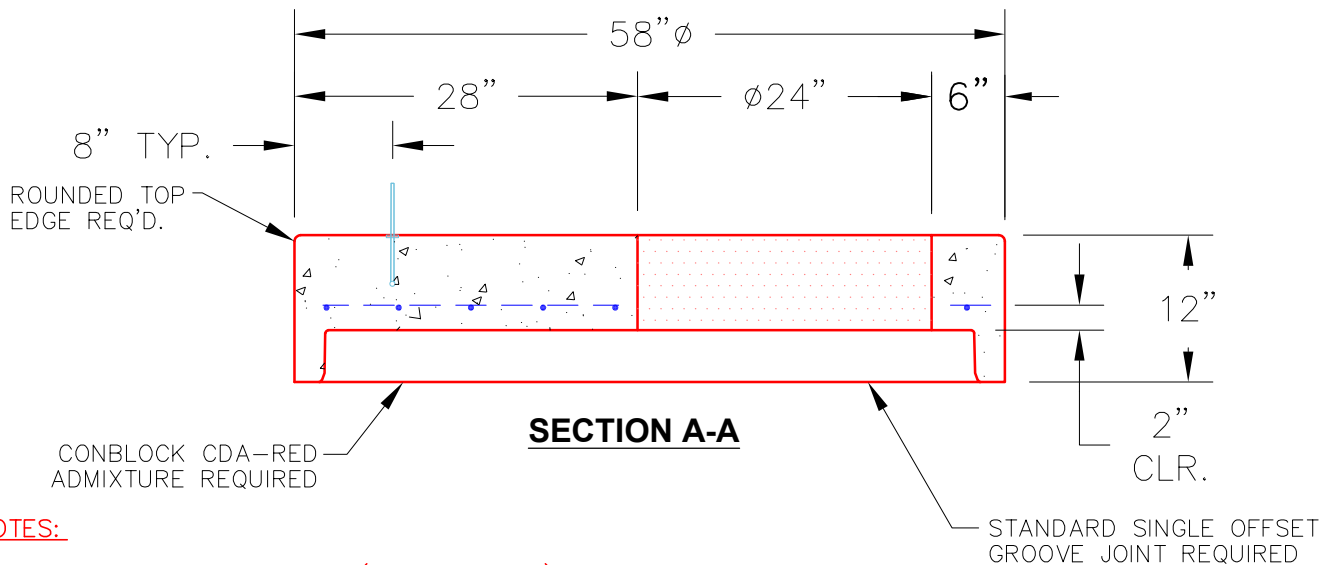
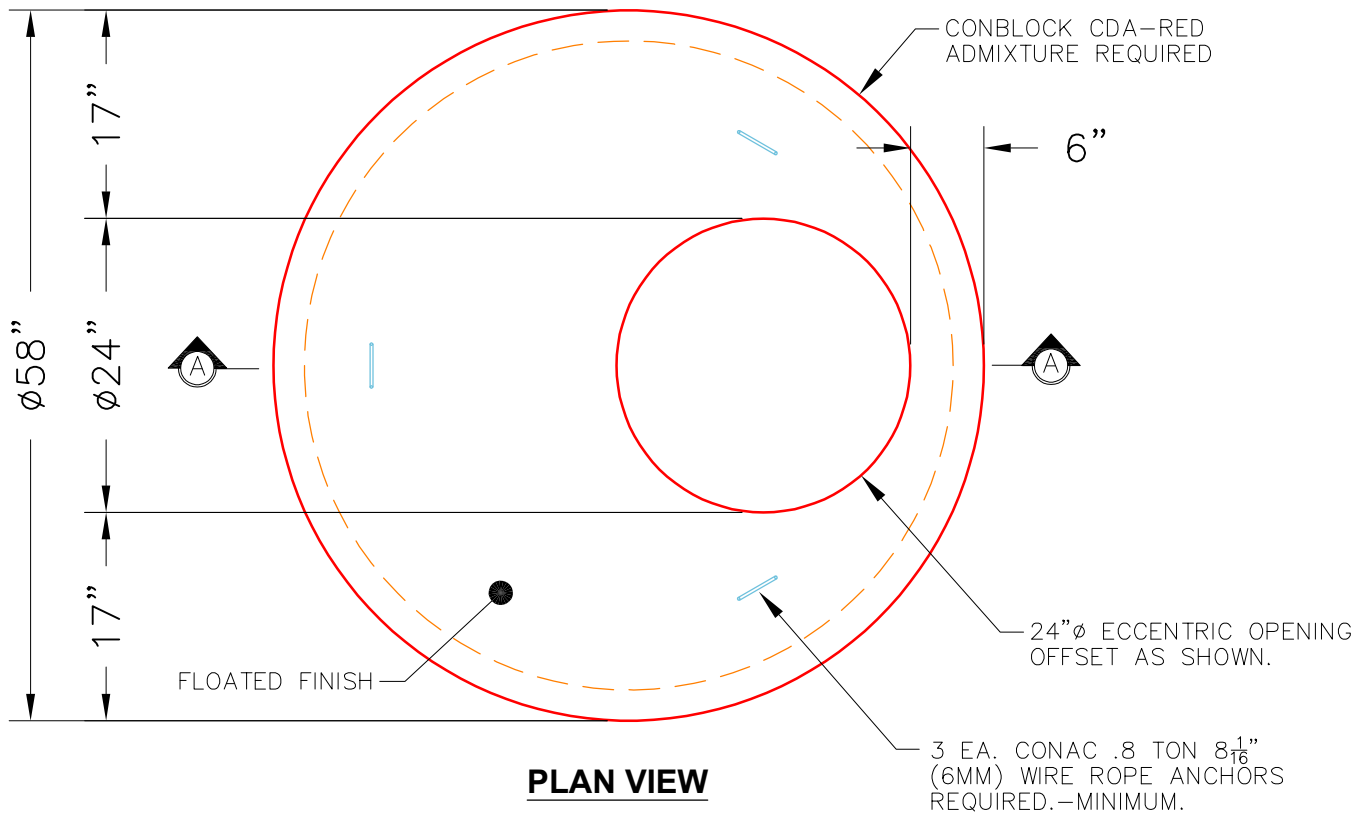



THIS DRAWING IS INTENDED TO BE PRINTED IN COLOR.



**NOTES:**

1. MANUFACTURED TO ASTM C-478 (LATEST REVISION).
2. CONCRETE: 5,000 PSI AT 28 DAYS.
3. CONBLOCK CDA-RED ADMIXTURE REQUIRED.
4. REINFORCING: #4 BAR @ 10" O.C. E.W. (GRADE 60).

PRODUCTION WORK ORDER		PRODUCT I.D.: MH048LD12CDARED	DESCRIPTION: 48" $\phi$ X 12" MH TOP SLAB 24" ECC W/ CDA-RED ADMIX	
	QUALITY CONTROL CHECKLIST	PRODUCT VIEW: RIGHT SIDE UP	CUSTOMER: APEX PLUMBING SOLUTIONS	
	<input type="checkbox"/> ALL DIMENSIONS CORRECT.	PLANT: BEAVER DAM, KY.	PROJECT: PERRYVILLE ADA RESTROOM FACILITY	
	<input type="checkbox"/> LIFTERS INSTALLED.	WEIGHT: 1,580 LBS.	STRUCTURE: SSMH-B1	
	<input type="checkbox"/> HOLE LOCATION CORRECT.	TOP SECTION JOINT: N/A	QUOTE/SALES ORDER NO: 25-1154	
	<input type="checkbox"/> REINFORCING CORRECT.	BASE SECTION JOINT: GROOVE	PC: J. JARVIS	DRAWING: J. COPPAGE
<input type="checkbox"/> FINISH ON SLAB SURFACE UNIFORM.	QC CHECK INITIALS:	DATE: 11/7/25	SCALE: NTS	PG. 1 of 1
<input type="checkbox"/> OUTSIDE TOP EDGE TROWELLED.				
<input type="checkbox"/> GROOVE JOINT INSTALLED.				