

Job Name: 25-1145 - 7959 Poplar Creek
Job Location: Nashville, TN 37221
Contractor: Elite Constructors, Inc.

PC: A. Chambers
 TECH: K. Cardwell
 Plant: Beaver Dam, KY



Structure ID: **MH-A5**

Spec: Sanitary
 Type: SAN.MH w/ConBlock-CDA Red
 Size: 48"

Rim: 606.14'
 Invert: 598.45'
 Rim to Invert: 7.69'

Sump: 1.375'
 Floor (Top): 598.335'
 Floor Height: 6"

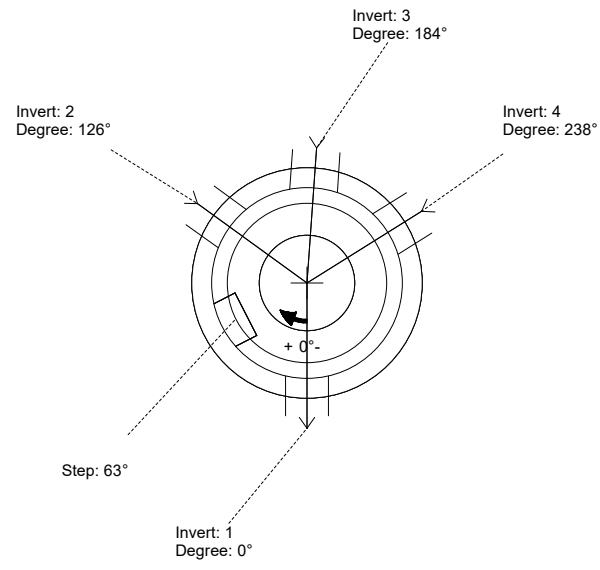
Floor (Bot): 597.835'
 Overall Height: 8.25'
 Slack: 0.655"

Structure Notes:

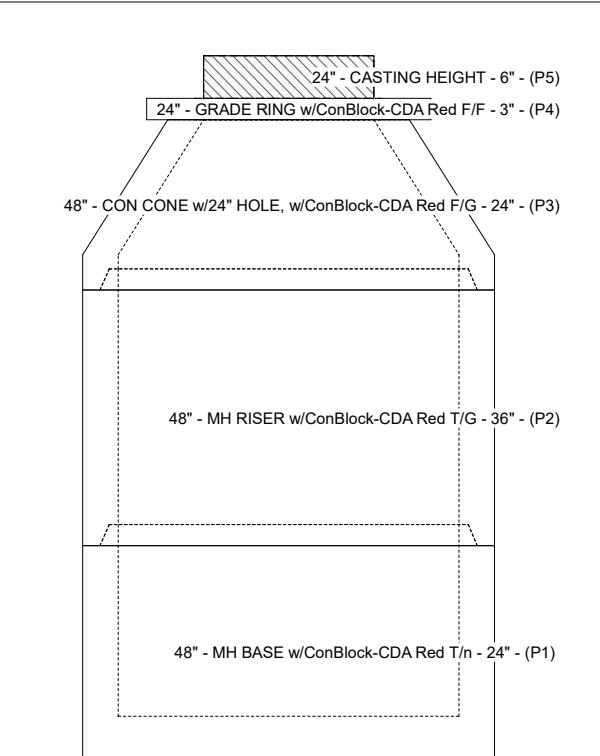
- STATION: 18+40.62
- 1. PER ASTM C-478 SPECS
- 2. CONCRETE: 4,500 PSI AT 28 DAYS
- 3. REINFORCEMENT: PER ASTM A615
- 4. CONBLOCK CDA RED ADMIXTURE REQUIRED
- 5. INVERT CHANNEL REQUIRED
- 6. STEPS AT 63 DEGREES
- 7. JBS 1155 FRAME & COVER "SANITARY" SUPPLIED BY ICAST

STRUCTURE SUMMARY:

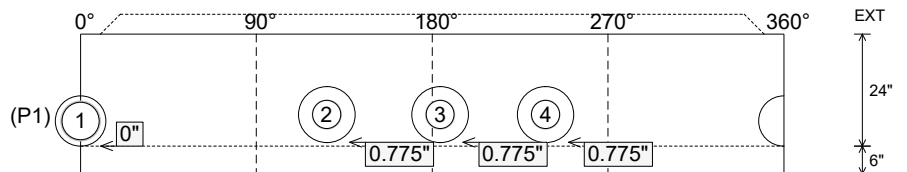
P5) 24" - CASTING HEIGHT - 6"	0 lb
P4) 24" - GRADE RING w/ConBlock-CDA Red F/F - 3"	202 lb
P3) 48" - CON CONE w/24" HOLE, w/ConBlock-CDA Red F/G - 24"	1297 lb
P2) 48" - MH RISER w/ConBlock-CDA Red T/G - 36"	2515 lb
P1) 48" - MH BASE w/ConBlock-CDA Red T/n - 24"	2825 lb
1) JOINT WRAP PRIMER - CONSEAL CS-75 (1 gal.)	0 lb
1) JOINT WRAP - 0.065"x6"x50" CONSEAL CS212	0 lb
1) 48" - MH INVERT CHANNEL w/ConBlock-CDA Red - FULL HEIGHT	1440 lb
1) CASTING - JBS 1155 F/C SANITARY	250 lb
2) 48" - Conseal CS-102 1.00" (Double)	0 lb
1) Quik-Lok - QL-08-C	1 lb
3) PSX - 12-06 NYLO	24 lb
7) MH Step ML-10-TDS-NCR - 10"	0 lb
Structure Total:	8554 lb



Position	Elev	Angle	Pipe	Pipe OD	Hole	Connector	Up (L)	Ref
Rim	606.14'							
Reducer								
Invert 1	598.45'	0°	8" PVC SDR26	8.5"	10.75"	Quik-Lok QL-08-C	0"	P1
Invert 2	598.65'	126°	6" PVC SDR26	6.25"	12"	PSX 12-06 NYLO	0.775"	P1
Invert 3	598.65'	184°	6" PVC SDR26	6.25"	12"	PSX 12-06 NYLO	0.775"	P1
Invert 4	598.65'	238°	6" PVC SDR26	6.25"	12"	PSX 12-06 NYLO	0.775"	P1
Invert 5								
Invert 6								
Invert 7								
Invert 8								



Cast (Int. Dim.) - Interior Dimensions



Submittal Drawing
 11/17/2025 2:03:34 PM

SUBMITTAL
 APPROVED BY: