

Job Name: 25-1145 - 7959 Poplar Creek
Job Location: Nashville, TN 37221
Contractor: Elite Constructors, Inc.

PC: A. Chambers
 TECH: K. Cardwell
 Plant: Beaver Dam, KY



Structure ID: **MH-A1**

Spec: Sanitary
 Type: SAN.MH w/ConBlock-CDA Red
 Size: 48"

Rim: 588.79'
 Invert: 577.35'
 Rim to Invert: 11.44'

Sump: 2"
 Floor (Top): 577.183'
 Floor Height: 6"

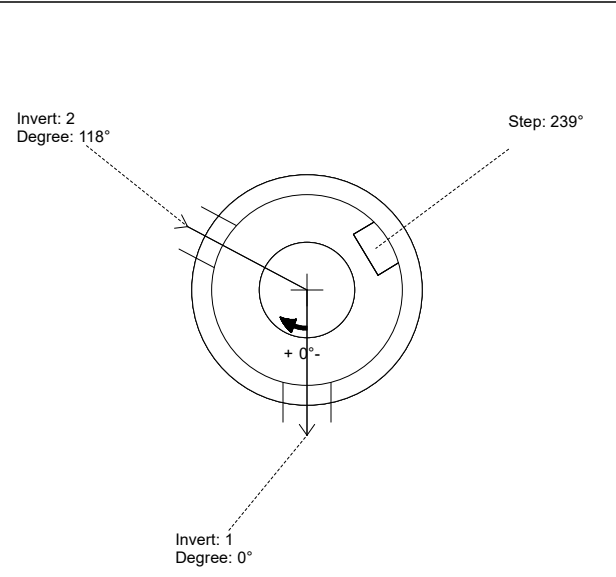
Floor (Bot): 576.683'
 Overall Height: 12'
 Slack: 1.28"

Structure Notes:

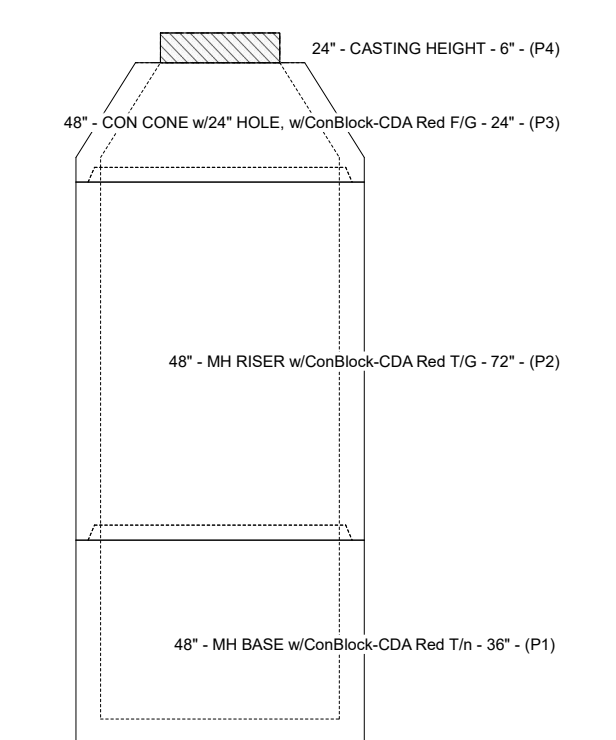
- STATION: 11+53.76
- PER ASTM C-478 SPECS
 - CONCRETE: 4,500 PSI AT 28 DAYS
 - REINFORCEMENT: PER ASTM A615
 - CONBLOCK CDA RED ADMIXTURE REQUIRED
 - INVERT CHANNEL REQUIRED
 - STEPS AT 239 DEGREES
 - JBS 1155 FRAME & COVER "SANITARY" SUPPLIED BY ICAST

STRUCTURE SUMMARY:

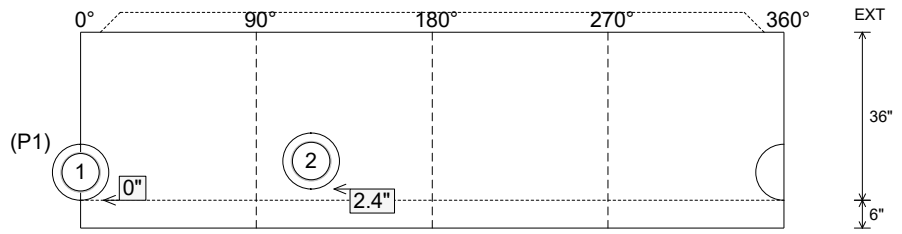
- | | |
|---|-----------------|
| P4) 24" - CASTING HEIGHT - 6" | 0 lb |
| P3) 48" - CON CONE w/24" HOLE, w/ConBlock-CDA Red F/G - 24" | 1297 lb |
| P2) 48" - MH RISER w/ConBlock-CDA Red T/G - 72" | 5030 lb |
| P1) 48" - MH BASE w/ConBlock-CDA Red T/n - 36" | 3749 lb |
| 1) JOINT WRAP PRIMER - CONSEAL CS-75 (1 gal.) | 0 lb |
| 1) JOINT WRAP - 0.065"x6"x50' CONSEAL CS212 | 0 lb |
| 1) 48" - MH INVERT CHANNEL w/ConBlock-CDA Red - FULL HEIGHT | 1440 lb |
| 1) CASTING - JBS 1155 F/C SANITARY | 250 lb |
| 2) 48" - Conseal CS-102 1.00" (Double) | 0 lb |
| 2) PSX - 12-08 NYLO | 16 lb |
| 11) MH Step ML-10-TDS-NCR - 10" | 0 lb |
| Structure Total: | 11782 lb |



Position	Elev	Angle	Pipe	Pipe OD	Hole	Connector	Up (L)	Ref
Rim	588.79'							
Reducer								
Invert 1	577.35'	0°	8" PVC SDR26	8.5"	12"	PSX 12-08 NYLO	0"	P1
Invert 2	577.55'	118°	8" PVC SDR26	8.5"	12"	PSX 12-08 NYLO	2.4"	P1
Invert 3								
Invert 4								
Invert 5								
Invert 6								
Invert 7								
Invert 8								



Cast (Int. Dim.) - Interior Dimensions



Submittal Drawing
 11/17/2025 2:03:27 PM

SUBMITTAL
 APPROVED BY: