

Job Name: 25-1145 - 7959 Poplar Creek  
 Job Location: Nashville, TN 37221  
 Contractor: Elite Constructors, Inc.

Plant: Beaver Dam, KY  
 11/17/2025 11:32:43 AM

Tech: K. Cardwell  
 PC: A. Chambers



**Structure ID: A2**

**P1 BX28640606-VH**

**BOX BASE 6inW, 6inF, Variable Ht T/n**

- P3) 28" x 64" - CASTING HEIGHT - 6"
- P2) 28" x 64" - BOX RISER 6inW F/G - 24"
- P1) 28" x 64" - BOX BASE 6inW, 6inF, Variable Ht T/n - 37"
- 1) CASTING - JBS 3101V Double Set (F/G/H)
- 2) 28" x 64" - Conseal CS-102 1.00"
- 4) Hole - 26
- 2) LINTEL BAR SLOT n/n - 7"x1"

0 lb  
 2506 lb  
 4317 lb  
 1238 lb  
 0 lb  
 0 lb  
 0 lb  
 -----  
 Structure Total: 8061 lb

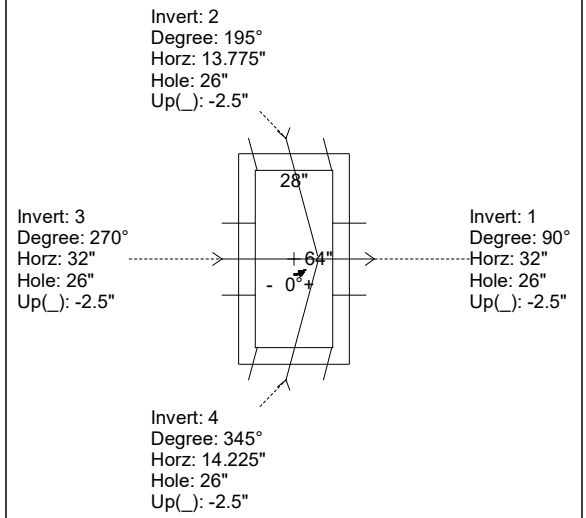
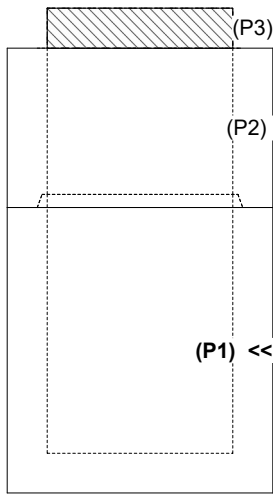
**Structure Notes:**  
 STATION: 12+20.75  
 1. PER ASTM C-913 SPECS  
 2. CONCRETE: 4,500 PSI AT 28 DAYS  
 3. REINFORCEMENT: #4 BAR @ 12" C.C. E.W. (GRADE 60) - 2" MIN. REBAR CLEARANCE (TYP)  
 4. 2 EA. JBS 3101-V FRAMES, L-VANE GRATES, & CURB HOODS SUPPLIED BY ICAST

Rim: 599.59' Rim to Invert: 5.59' Slack: 0.08" Sump: 0" Step Position:

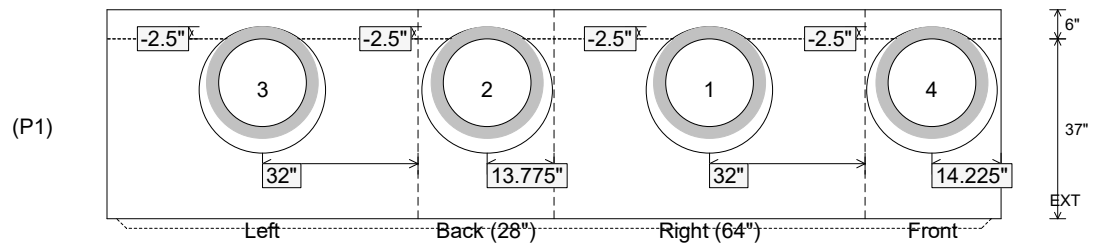
Position	Elev	Angle	Ext. (cw)	Pipe	Pipe OD	Connector	Hole	Horz Size	Up ( )	Offset
Invert 1	594'	90°	38"	18" RCP B WALL	23"	Hole 26	26"	26"	-2.5"	0"
Invert 2	594'	195°	21.382"	18" RCP B WALL	23"	Hole 26	26"	26.917"	-2.5"	-8.5"
Invert 3	594'	270°	38"	18" RCP B WALL	23"	Hole 26	26"	26"	-2.5"	0"
Invert 4	594'	345°	18.618"	18" RCP B WALL	23"	Hole 26	26"	26.917"	-2.5"	8.5"
Invert 5										
Invert 6										
Invert 7										
Invert 8										

RIGHT-SIDE UP VIEW (int. dimensions)

UPSIDE-DOWN VIEW (int. dimensions)



INSIDE WALL DIMENSIONS



Coating (Int):  
 Coating (Ext):

Seam Up: Tongue  
 Seam Dn: n/a

Wall Thickness: 6"  
 Floor Height: 6"

Height (Int): 37"  
 Height (Ext): 43"

Weight (Net): 4317 lb  
 Volume (Net): 1.1cu.yd