

DIMENSIONS & QUANTITIES

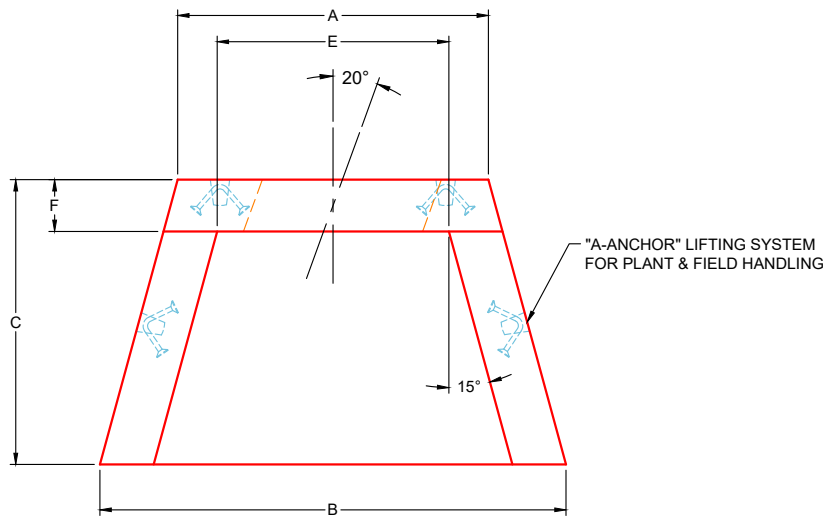
TYPE	PIPE Ø	A	B	C	D	E	F	G	WEIGHT
BW	18"	4'-0"	6'-0"	3'-8"	3'-0"	3'-0"	8"	6"	3,100 LBS.

GENERAL NOTES:

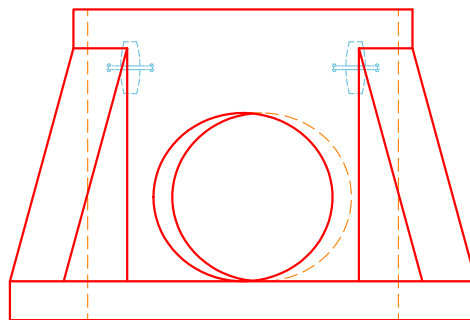
1. CONCRETE: 4,500 PSI AT 28 DAYS MINIMUM COMPRESSIVE STRENGTH
2. REINFORCING: #4 BAR @ 12" C/C E.W. (GRADE 60), WITH 2" CONCRETE COVER MINIMUM
3. REINFORCING BARS TO BE TACK WELDED OR TIED
4. PIPE AND LIFTING ANCHOR POCKETS TO BE GROUTED WITH NON-SHRINK GROUT AFTER SETTING

NOTE:

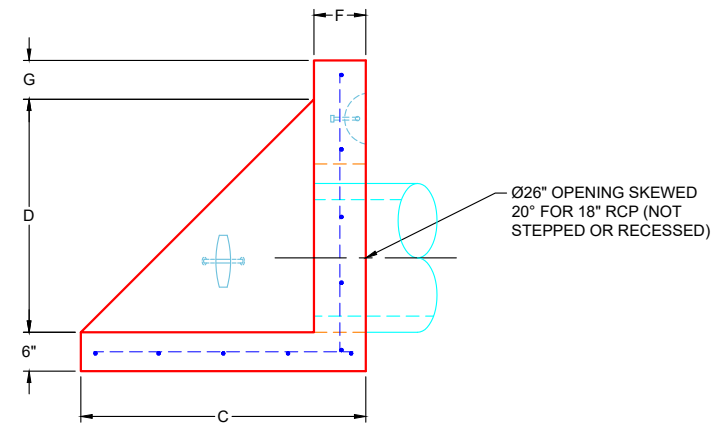
THIS HEADWALL IS SIZED AS A STANDARD BW HEADWALL TO ACCOMMODATE THE 20° PIPE SKEW.



PLAN VIEW



FRONT VIEW



SIDE VIEW

REVISION INFORMATION

REV.	DATE	DESCRIPTION
NO REVISIONS TO DATE		



SUBMITTAL DRAWING: 18" BW HEADWALL - 20° SKEW	
CUSTOMER: ELITE CONSTRUCTORS, INC.	
PROJECT: 7959 POPLAR CREEK	
STRUCTURE: A0	
QUOTE/SALES ORDER NO: 25-1145	
CHECKED BY: B. SMITH	DRAWN BY: K. CARDWELL
DATE: 11/17/25	SCALE: NTS PG. 1 OF 1