

Job Name: 25-1137B - East Bank Regional Pump Station
 Job Location: Nashville, TN
 Contractor: Garney Companies, Inc.

Plant: Beaver Dam

Tech: J. Coppage

12/12/2025 10:08:46 AM

PC: J. Jarvis



Structure ID: Valve Vault

P3 CVR-X

BOX RISER 8inW, Variable Ht w/Xypex FT

- P5) 42" x 42" - HATCH (CAST FLUSH) - 3"
- P4) 108" x 156" - BX FLAT LID 8inW w/ XYPEX AND 3 HATCHES - 8"
- P3) 108" x 156" - BOX RISER 8inW, Variable Ht w/Xypex FT - 37"
- P2) 108" x 156" - BOX RISER 8inW, Variable Ht w/Xypex FB - 60"
- P1) 108" x 156" - P.I.P. BY OTHERS - BTM SLAB - 0"
- 4) DOGHOUSE - 22"x22"

100 lb
 11079 lb
 13909 lb
 20332 lb
 0 lb
 0 lb

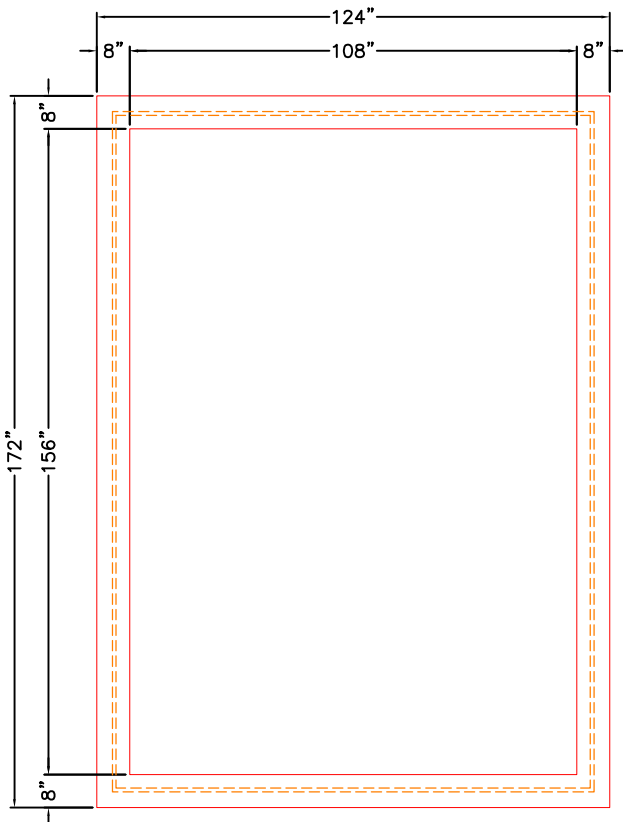
 Structure Total: 45420 lb

- Structure Notes:
1. MANUFACTURED TO ASTM C-913 (LATEST REVISION).
 2. CONCRETE: 4,500 PSI AT 28 DAYS.
 3. XYPEX ADMIXTURE REQUIRED.
 4. REINFORCING: PER ASTM A615 (GRADE 60).
 5. TWO HALLIDAY F1H 42" X 42" HATCHES AND ONE HALLIDAY F1H 36" X 36" HATCH PROVIDED BY ICAST.
 6. ALL HATCHES TO HAVE FALL PROTECTION.
 7. TOP SLAB TO HAVE MINIMUM 1/4" CROWNED SLOPE PER FOOT AND A BRUSH FINISH.
 8. HATCHES TO BE CAST IN TOP SLAB.

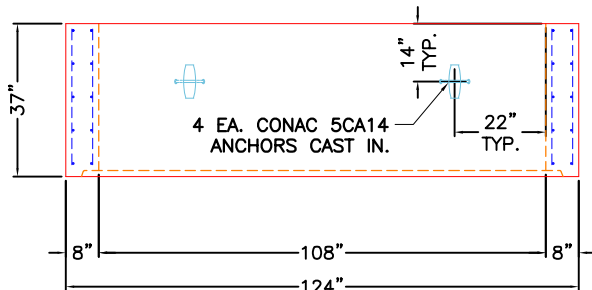
Rim: 417.25' Rim to Invert: 7' Slack: 0' Sump: 21' Step Position:

GENERAL NOTES:

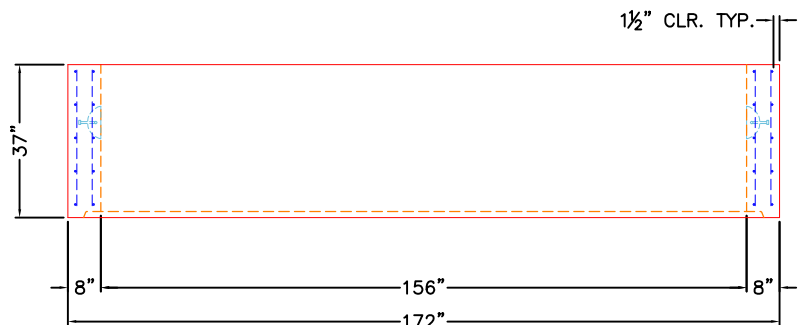
1. MANUFACTURED TO ASTM C-913 (LATEST REVISION).
2. CONCRETE: 4,500 PSI AT 28 DAYS.
3. XYPEX ADMIXTURE REQUIRED.
4. REINFORCING: PER ASTM A615 (GRADE 60).
 HORIZONTALS - #5 BAR @ 6" O.C.
 OUTER VERTICALS - #5 BAR @ 6" O.C.
 INNER VERTICALS - #5 BAR @ 12" O.C.
5. WEIGHT: 13,909 LBS.



TOP VIEW



FRONT VIEW



RIGHT VIEW

Coating (Int):
 Coating (Ext):

Seam Up: Flat
 Seam Dn: Groove

Wall Thickness: 8"
 Floor Height: 0"

Height (Int): 37"
 Height (Ext): 37"

Weight (Net): 13909 lb
 Volume (Net): 3.55cu.yd