

Job Name: 25-1137B - East Bank Regional Pump Station  
 Job Location: Nashville, TN  
 Contractor: Garney Companies, Inc.

Plant: Beaver Dam

Tech: J. Coppage

3/3/2026 11:46:15 AM

PC: J. Jarvis



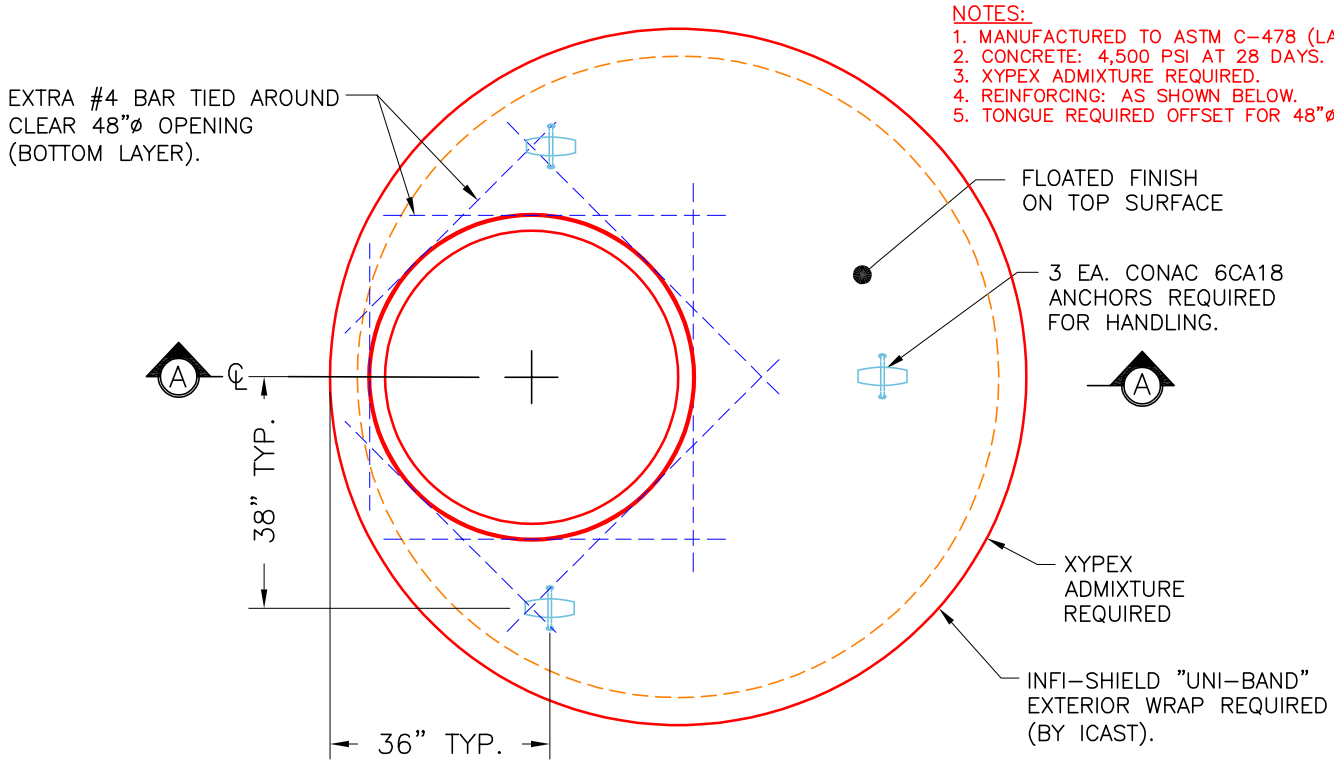
**Structure ID: MH-004 6+34**

**P3 MH096TS17ECCX**

**MH Transition Slab 48" Hole w/ Xypex**

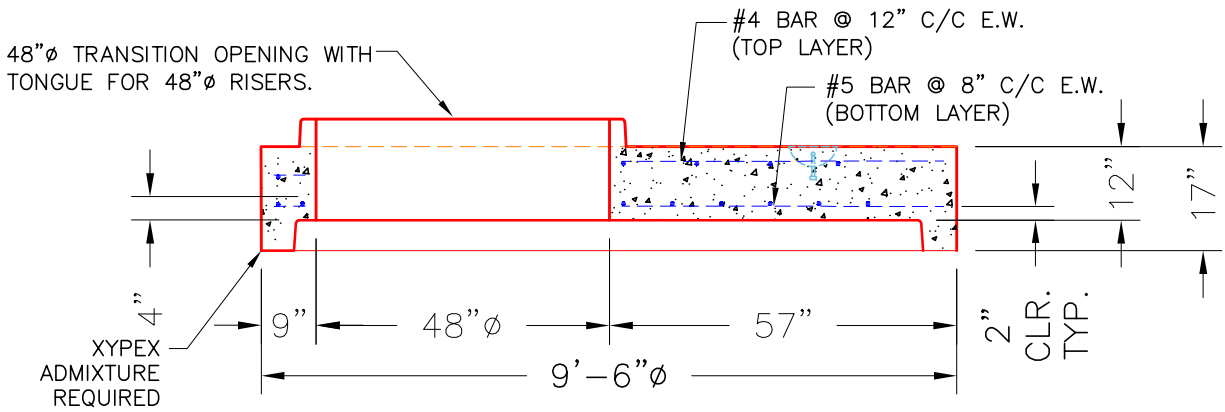
- P8) 24" - CASTING HEIGHT - 7"
- P7) 24" - XYPEX GRADE RING - 6"
- P6) 48" - CON XYPEX CONE w/24" HOLE - 36"
- P5) 48" - MH RISER w/XYPEX - 36"
- P4) 48" - MH RISER w/XYPEX - 72"
- P3) 96" - MH Transition Slab 48" Hole w/ Xypex - 17"
- P2) 96" - MH RISER w/XYPEX - 96"
- P1) 96" - MH BASE SLAB w/XYPEX - 8"
- 1) JOINT WRAP PRIMER - CONSEAL CS-75 (1 gal.)
- 1) JOINT WRAP - 0.065"x6"x50' CONSEAL CS212
- 1) CASTING - JBS 1150 F/C SANITARY
- 2) 96" - Conseal CS-102 1.00" (Double)
- 3) 48" - Conseal CS-102 1.00" (Double)
- 1) Kor-N-Seal2 - S206-54L
- 1) Kor-N-Seal2 - S206-30

0 lb	<b>Structure Notes:</b>
405 lb	1. JBS-1150 METRO SANITARY BY ICAST.
2251 lb	2. PER ASTM C478 SPECIFICATIONS.
2515 lb	3. CONCRETE = 4,500 PSI AT 28 DAYS.
5030 lb	4. REINFORCING PER ASTM A615 (GRADE 60)
9106 lb	- TOP (As .62) #5 BAR AT 6" C/C E.W.
21554 lb	- WALLS (As .18) WWF OR EQUIV.
10880 lb	- FLOOR (As .20) #4 BAR AT 12" C/C E.W. DOUBLE MAT
0 lb	- TRANS SLAB AS SHOWN BELOW
0 lb	NOTE: KOR-N-SEAL BOOTS SUPPLIED BY OTHERS
250 lb	
0 lb	
0 lb	
6 lb	
6 lb	
-----	
Structure Total:	52004 lb



- NOTES:**
1. MANUFACTURED TO ASTM C-478 (LATEST REVISION).
  2. CONCRETE: 4,500 PSI AT 28 DAYS.
  3. XYPEX ADMIXTURE REQUIRED.
  4. REINFORCING: AS SHOWN BELOW.
  5. TONGUE REQUIRED OFFSET FOR 48" Ø COMPONENTS.

**(PLAN VIEW)**



**(SECTION A-A)**

Coating (Int): Coating (Ext):	Seam Up: Tongue Seam Dn: Groove	Wall Thickness: 9"	Height (Ext): 17"	Weight (Net): 9106 lb Volume (Net): 2.33cu.yd
----------------------------------	------------------------------------	--------------------	-------------------	--