

Job Name: 25-1137B - East Bank Regional Pump Station  
 Job Location: Nashville, TN  
 Contractor: Garney Companies, Inc.

Plant: Beaver Dam

Tech: J. Coppage

3/3/2026 11:45:50 AM

PC: J. Jarvis



**Structure ID: MH-004 6+34**

**P1 MH096BS08X**

**MH BASE SLAB w/YYPEX**

- P8) 24" - CASTING HEIGHT - 7"
- P7) 24" - XYPEX GRADE RING - 6"
- P6) 48" - CON XYPEX CONE w/24" HOLE - 36"
- P5) 48" - MH RISER w/XYPEX - 36"
- P4) 48" - MH RISER w/XYPEX - 72"
- P3) 96" - MH Transition Slab 48" Hole w/ Xypex - 17"
- P2) 96" - MH RISER w/XYPEX - 96"
- P1) 96" - MH BASE SLAB w/XYPEX - 8"
- 1) JOINT WRAP PRIMER - CONSEAL CS-75 (1 gal.)
- 1) JOINT WRAP - 0.065"x6"x50' CONSEAL CS212
- 1) CASTING - JBS 1150 F/C SANITARY
- 2) 96" - Conseal CS-102 1.00" (Double)
- 3) 48" - Conseal CS-102 1.00" (Double)
- 1) Kor-N-Seal2 - S206-54L
- 1) Kor-N-Seal2 - S206-30

- Structure Notes:**
1. JBS-1150 METRO SANITARY BY ICAST.
  2. PER ASTM C478 SPECIFICATIONS.
  3. CONCRETE = 4,500 PSI AT 28 DAYS.
  4. REINFORCING PER ASTM A615 (GRADE 60)
    - TOP (As .62) #5 BAR AT 6" C/C E.W.
    - WALLS (As .18) WWF OR EQUIV.
    - FLOOR AS SHOWN BELOW

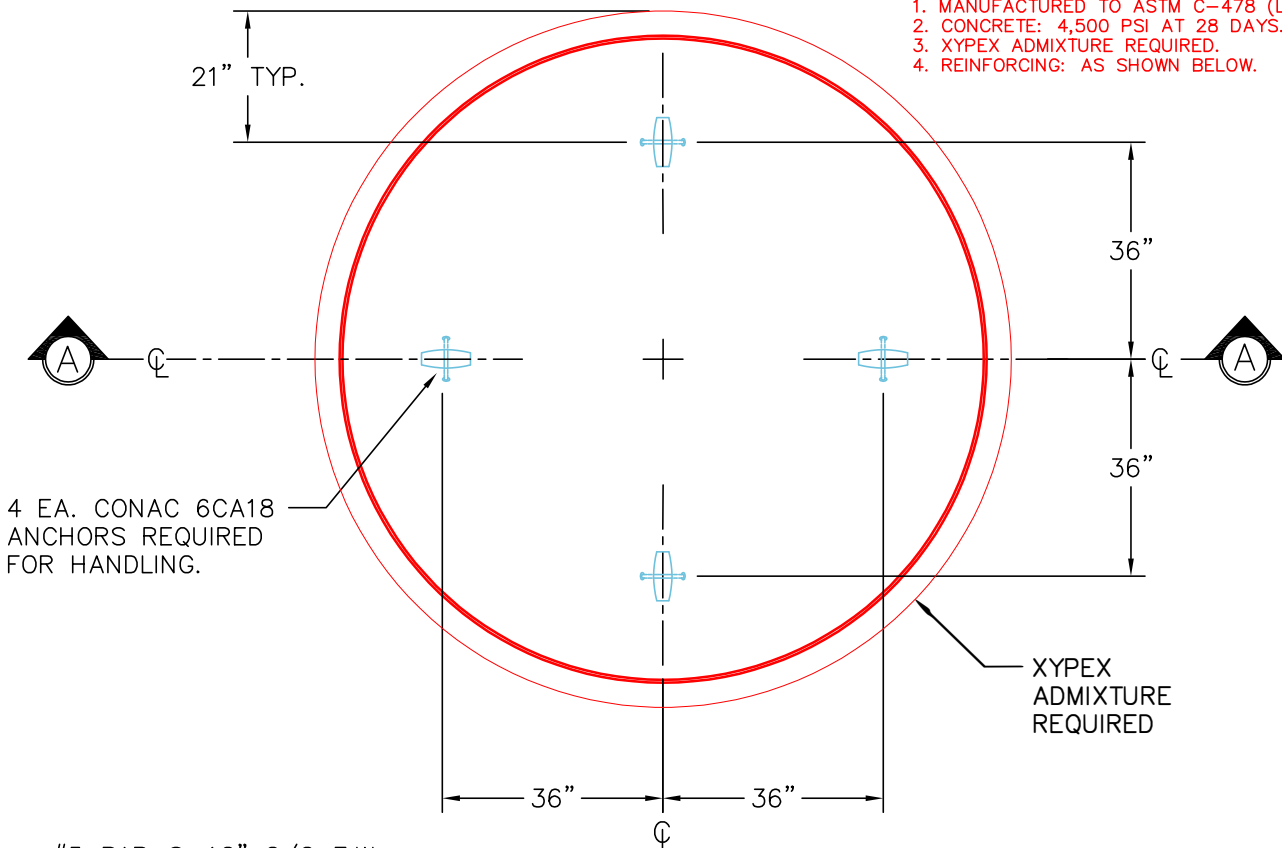
- 0 lb
- 405 lb
- 2251 lb
- 2515 lb
- 5030 lb
- 9106 lb
- 21554 lb
- 10880 lb
- 0 lb
- 0 lb
- 250 lb
- 0 lb
- 0 lb
- 0 lb
- 6 lb
- 6 lb

NOTE: KOR-N-SEAL BOOTS SUPPLIED BY OTHERS

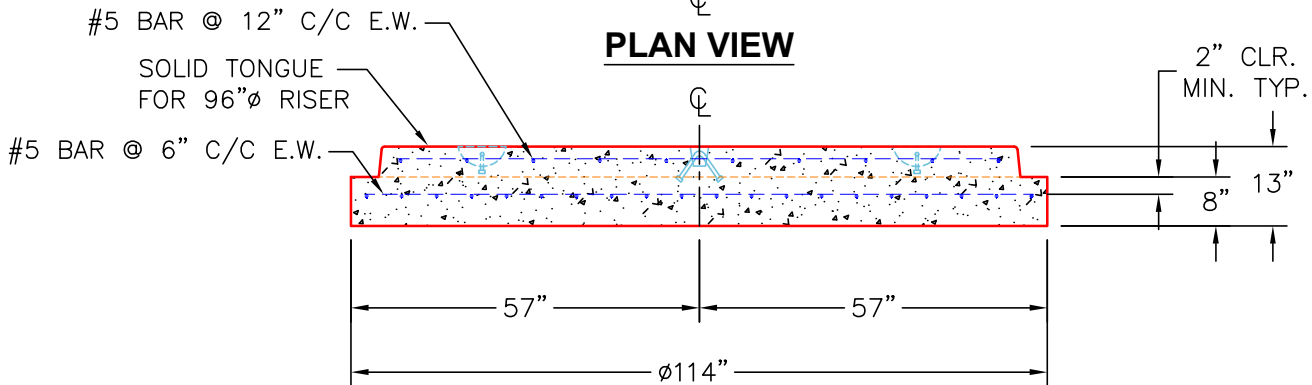
Rim: 419.43' Rim to Invert: 21.46' Slack: 1.56" Sump: 14.04" Structure Step Position: 225

**NOTES:**

1. MANUFACTURED TO ASTM C-478 (LATEST REVISION).
2. CONCRETE: 4,500 PSI AT 28 DAYS.
3. XYPEX ADMIXTURE REQUIRED.
4. REINFORCING: AS SHOWN BELOW.



**PLAN VIEW**



**SECTION A-A**

Coating (Int): Coating (Ext):	Seam Up: Tongue Seam Dn: n/a	Wall Thickness: 9" Floor Height: 8"	Height (Int): 0" Height (Ext): 0"	Weight (Net): 10880 lb Volume (Net): 2.78cu.yd
----------------------------------	---------------------------------	--	--------------------------------------	---