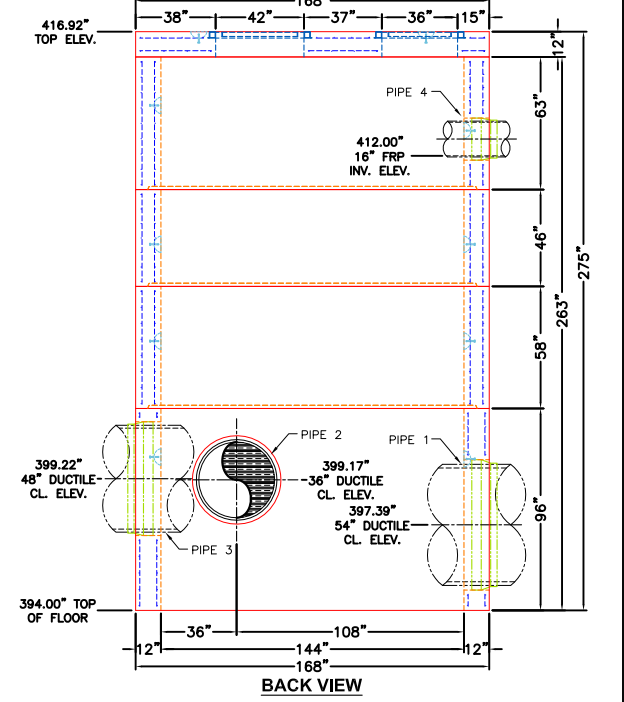
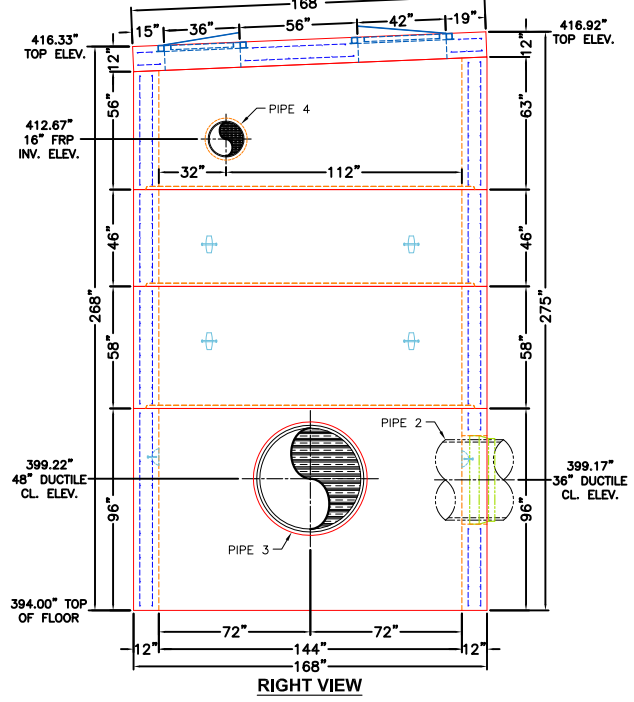
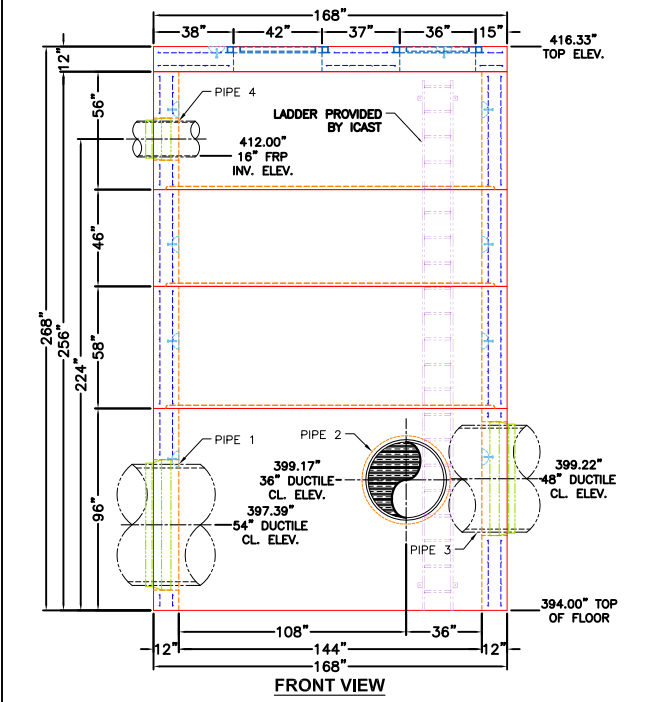


**OPENINGS**

| PIPE # | ELEVATION   | ANGLE | PIPE        | CONNECTOR | HOLE SIZE |
|--------|-------------|-------|-------------|-----------|-----------|
| 1      | 397.40(CL)  | 90    | 54" DUCTILE | S206-62   | 62"       |
| 2      | 399.11(CL)  | 180   | 36" DUCTILE | S206-42   | 42"       |
| 3      | 399.14(CL)  | 270   | 48" DUCTILE | S206-54L  | 54"       |
| 4      | 412.00(INV) | 90    | 16" FRP**   | S206-20   | 20"       |

\*\*ø16" FRP PIPE ASSUMED TO HAVE AN OD OF ø16.5"\*\*

- GENERAL NOTES:**
1. MANUFACTURED TO ASTM C-913 (LATEST REVISION).
  2. CONCRETE: 5,000 PSI AT 28 DAYS.
  3. XYPEX ADMIXTURE REQUIRED.
  4. REINFORCING: DESIGN BY MATT CHILDS ENGINEERING PLLC. PER ASTM A615 (GRADE 60).
  5. WEIGHTS:  
TOTAL = 179,348 LBS.  
TOP SLAB = 23,563 LBS.  
63" TALL RISER = 37,070 LBS.  
46" TALL RISER = 28,903 LBS.  
58" TALL RISER = 36,433 LBS.  
BASE SECTION = 53,379 LBS.
  6. TWO HALLIDAY F1H 42" X 42" HATCHES AND ONE HALLIDAY F1H 36" X 36" HATCH PROVIDED BY ICAST.
  7. ALL HATCHES TO HAVE FALL PROTECTION.
  8. HATCHES TO BE CAST IN TOP SLAB.
  9. TOP SLAB TO HAVE A BRUSH FINISH.
  10. LADDER AND LADDER SAFETY POST TO BE PROVIDED BY ICAST.
  11. VERIFY THE OD OF THE PIPES TO ENSURE THE CORRECT A-LOKS ARE PROVIDED.
  12. KOR-N-SEAL BOOTS SUPPLIED BY OTHERS



| REVISION INFORMATION |                      |
|----------------------|----------------------|
| REV. Δ DATE:         | NO REVISIONS TO DATE |
|                      |                      |
|                      |                      |
|                      |                      |
|                      |                      |



|  |                   |            |
|--|-------------------|------------|
| SUBMITTAL DRAWING: 12' X 12' X 22' GRINDER VAULT |                   |            |
| CUSTOMER: GARNEY COMPANIES, INC.                 |                   |            |
| PROJECT: EAST REGIONAL BANK PUMP STATION         |                   |            |
| STRUCTURE: GRINDER VAULT                         |                   |            |
| QUOTE/SALES ORDER NO: 25-1137B                   |                   |            |
| PC: J. JARVIS                                    | DRAWN BY: JC / KC |            |
| DATE: 11/20/25                                   | SCALE: NTS        | PG. 1 of 1 |