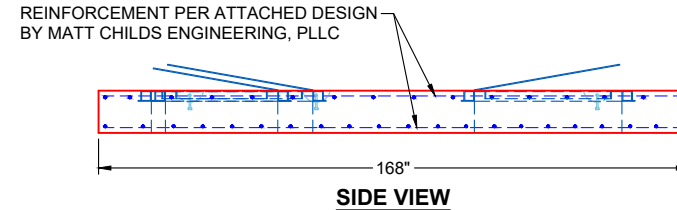
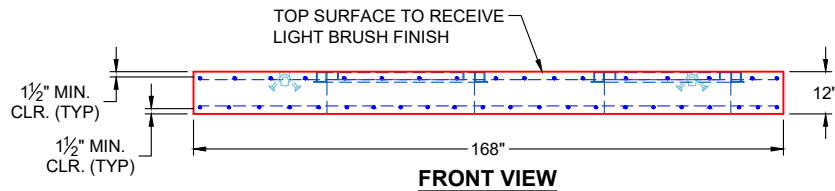


GENERAL NOTES:

1. MANUFACTURED TO ASTM C-913 (LATEST REVISION)
2. CONCRETE: 5,000 PSI AT 28 DAYS
3. REINFORCEMENT PER ATTACHED DESIGN BY MATT CHILDS ENGINEERING, PLLC
4. WEIGHT: 23,563 LBS
5. 2 EA. HALLIDAY F1H 42" X 42" HATCHES SUPPLIED BY ICAST - TO BE CAST INTO FLAT LID
6. 1 EA. HALLIDAY F1H 36" X 36" HATCH SUPPLIED BY ICAST - TO BE CAST INTO FLAT LID
7. ALL HATCHES TO HAVE FALL PROTECTION
8. LIFTERS: 4 EA. 6CA18 CONAC A-ANCHORS FOR PLANT & FIELD HANDLING
9. TOP SURFACE TO RECEIVE LIGHT BRUSH FINISH
10. XYPEX ADMIXTURE REQUIRED

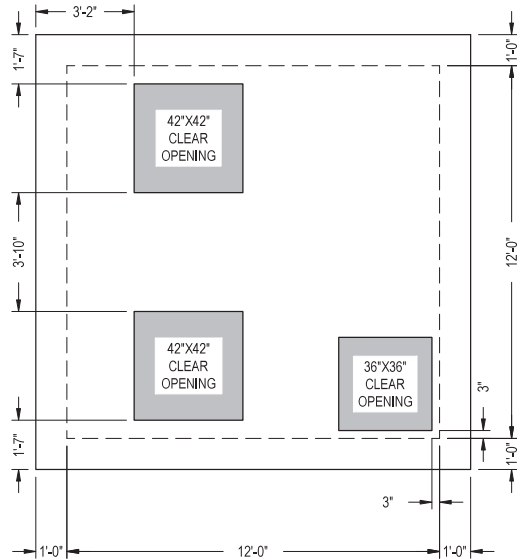


PRODUCTION WORK ORDER		PRODUCT I.D.: CTSX	DESCRIPTION: 168" X 168" X 12" FLAT LID SPECIAL W/ XYPEX		
	QUALITY CONTROL CHECKLIST <input type="checkbox"/> ALL DIMENSIONS CORRECT. <input type="checkbox"/> LIFTERS INSTALLED. <input type="checkbox"/> HOLE LOCATION(S) CORRECT. <input type="checkbox"/> REINFORCING CORRECT. <input type="checkbox"/> HATCH LOCATION(S) & ORIENTATION(S). <input type="checkbox"/> EDGES CHAMFERED. <input type="checkbox"/> SHIPLAP JOINT INSTALLED.	PRODUCT VIEW: RIGHT SIDE UP	CUSTOMER: GARNEY COMPANIES, INC.		
		PLANT: BEAVER DAM, KY	PROJECT: EAST REGIONAL BANK PUMP STATION		
		WEIGHT: 23,563 LBS	STRUCTURE: GRINDER VAULT (PIECE 5)		
		TOP SECTION JOINT: FLAT	ORDER NO: 25-1137B		
		BASE SECTION JOINT: N / A	PE: J.H. ROSS	DRAWING: K. CARDWELL	
		QC CHECK INITIALS:	DATE: 11/25/25	SCALE: NTS	PG. 1 OF 1

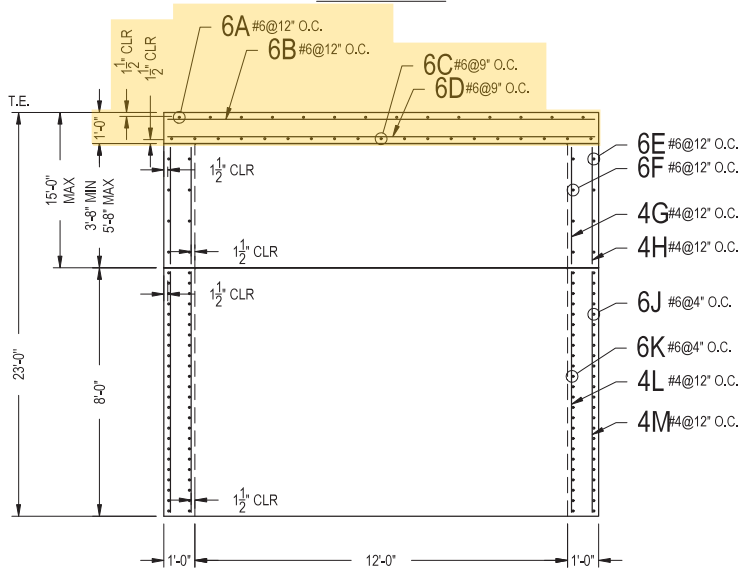
DESIGN NOTE:

HS20 LOADING - ASTM C890
 CONCRETE 28 DAY COMPRESSIVE STRENGTH - 5000 PSI
 REINFORCEMENT STEEL - 60,000 PSI
 REBAR MIN SPLICE LENGTHS: #4-22" #5-28" #6-33"
 PLACE 4-#4 BAR DIAGONAL AROUND OPENING(S)

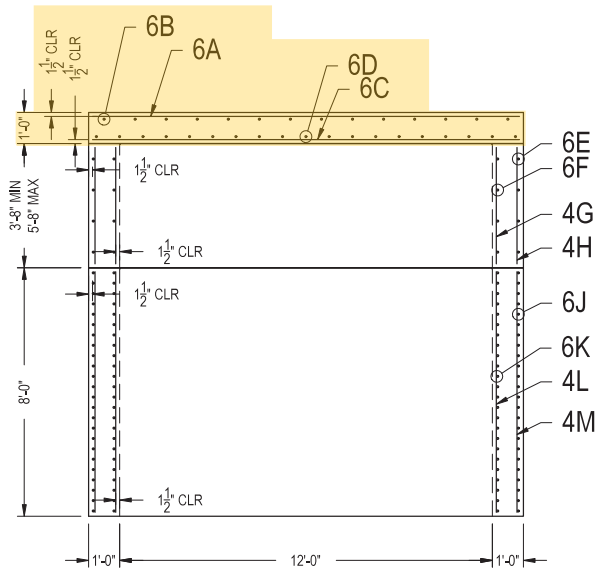
STEEL REINFORCEMENT SHOWN BELOW SHALL BE CUT AS REQUIRED FOR WALL PENETRATIONS AND PRECAST JOINT LOCATIONS. PLEASE NOTE: DUE TO PRECAST PRODUCTION CONSTRAINTS, NO REINFORCING WILL BE CONTINUOUS ACROSS PRECAST JOINTS.



PLAN VIEW



FRONT VIEW



RIGHT VIEW

**12X12X22
GRINDER
VAULT**

REINFORCING STEEL SCHEDULE

MARK	NO.	LENGTH	TYPE	lb/EA.	TOTAL LB	BENDING DIAGRAM	
6A	14	13'-9"	STR.	20.6525	289,1350	13'-9"	12'-6"
6B	14	13'-9"	STR.	20.6525	289,1350	13'-9"	12'-6"
6C	19	13'-9"	STR.	20.6525	392,3975	13'-9"	12'-6"
6D	19	13'-9"	STR.	20.6525	392,3975	13'-9"	12'-6"
6E	VARIES	30'-3" (2)	BENT	45.4355	VARIES	13'-9"	12'-6"
6F	VARIES	27'-8" (2)	BENT	41.5553	VARIES	13'-9"	12'-6"
4G	50	VARIES	STR.	VARIES	VARIES		
4H	56	VARIES	STR.	VARIES	VARIES		
6J	24	30'-3" (2)	BENT	45.4355	2180,9040	13'-9"	12'-6"
6K	24	27'-8" (2)	BENT	41.5553	1994,6560	13'-9"	12'-6"
4L	50	7'-9"	STR.	5.1770	258,8500		
4M	56	7'-9"	STR.	5.1770	289,9120		

